

Concealed thermostat with one function volume control - Brushed Dark Brass **SERIES SPECIFIC**

36 425 970 Product version from 6/30/2022



- cover plate Ø 150 mm
- temperature control handle with safety limit stop at 38°C
- hot water temperature limiter, can be preset

| | | |
|---|-------------------------------|--------------------|
|  | Brushed Dark Brass | 36 425 970-39 0010 |
|  | Chrome | 36 425 970-00 0010 |
|  | Brushed Platinum | 36 425 970-06 0010 |
|  | Platinum | 36 425 970-08 0010 |
|  | Dark Chrome | 36 425 970-19 0010 |
|  | Light Gold | 36 425 970-26 0010 |
|  | Brushed Light Gold | 36 425 970-27 0010 |
|  | Brushed Durabrass (23kt Gold) | 36 425 970-28 0010 |
|  | Matte Black | 36 425 970-33 0010 |
|  | Brushed Bronze | 36 425 970-42 0010 |
|  | Brushed Champagne (22kt Gold) | 36 425 970-46 0010 |
|  | Champagne (22kt Gold) | 36 425 970-47 0010 |
|  | Brushed Chrome | 36 425 970-93 0010 |
|  | Brushed Dark Platinum | 36 425 970-99 0010 |

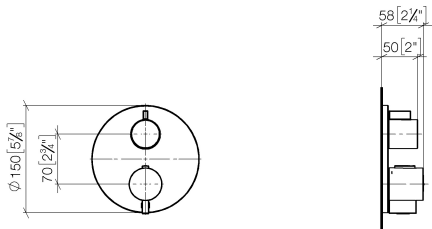
Concealed thermostat with one function volume control - Brushed Dark Brass

SERIES SPECIFIC

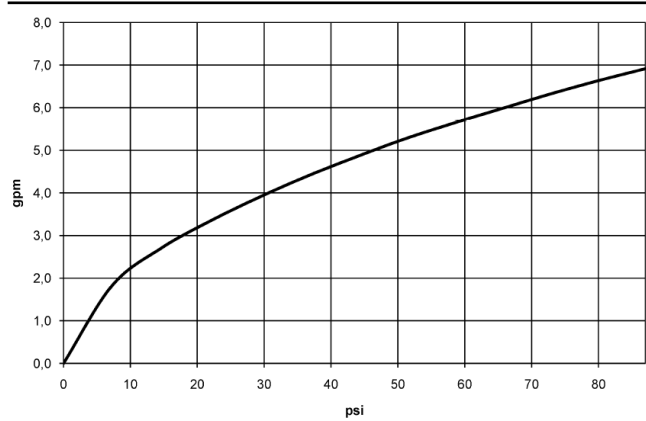
36 425 970

Product version from 6/30/2022

mm [inches]



Flow rate chart



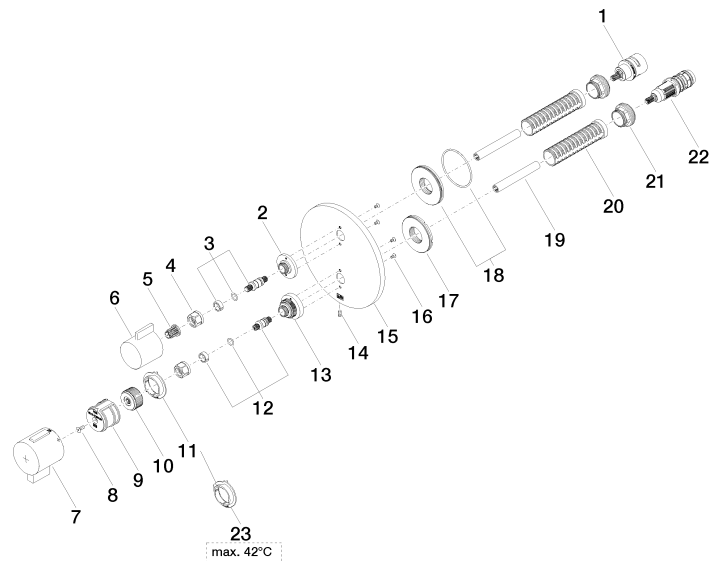
Codes & Standards

ADA

Concealed thermostat with one function volume control - Brushed Dark Brass SERIES SPECIFIC

36 425 970 Product version from 6/30/2022

Parts for other
finishes can be found
here: [Chrome](#)



Concealed thermostat with one function volume control - Brushed Dark Brass SERIES SPECIFIC

36 425 970 Product version from 6/30/2022

Spare parts list

| No. | Item Number | Name | Quantity used | Delivery time |
|--|--------------------|------------|---------------|---------------|
| 13 | 09 12 12 051-39 | base | 1.00 | 60 |
| 12 | 04 29 06 024 01-39 | spindle | 1.00 | - |
| Spare part can no longer be ordered, please order the replacement item | | | | |
| 19 | 90 23 01 124 00 90 | sleeve | 2.00 | 2 |
| 1 | 90 90 03 166 00 90 | top | 1.00 | 2 |
| 18 | 90 30 01 190 00 90 | disc | 1.00 | 2 |
| 23 | 09 28 10 189 90 | regulator | 1.00 | 2 |
| 17 | 09 30 01 296 90 | disc | 1.00 | 2 |
| 11 | 09 28 10 190 90 | regulator | 1.00 | 2 |
| 15 | 09 11 02 242-39 | plate | 1.00 | 60 |
| 21 | 09 24 04 257 90 | nut | 2.00 | 2 |
| 10 | 09 12 12 054 90 | base | 1.00 | 2 |
| 14 | 09 31 11 134 90 | pin | 1.00 | 2 |
| 2 | 09 12 12 053-39 | base | 1.00 | 60 |
| 7 | 90 17 33 019 00-39 | handle | 1.00 | 30 |
| 3 | 04 29 06 111 01-39 | spindle | 1.00 | - |
| Spare part can no longer be ordered, please order the replacement item | | | | |
| 16 | 09 30 30 157 90 | screw | 4.00 | 2 |
| 6 | 09 20 67 006-39 | handle | 1.00 | 60 |
| 5 | 90 12 12 002 00 90 | fixing cap | 1.00 | 2 |
| 20 | 90 18 40 077 01 90 | spindle | 2.00 | 2 |
| 22 | 90 15 02 013 00 90 | cartridge | 1.00 | 2 |
| 8 | 90 30 30 124 00 90 | screw | 1.00 | 2 |
| 4 | 90 23 30 023 00 90 | nut | 2.00 | 2 |
| 9 | 90 12 12 052 00 90 | base | 1.00 | 2 |