

Concealed thermostat with one function volume control - Champagne (22kt Gold)

META

36 425 970



- cover plate Ø 150 mm
- temperature control handle with safety limit stop at 38°C
- hot water temperature limiter, can be preset

	Champagne (22kt Gold)	36 425 970-47 0010
	Chrome	36 425 970-00 0010
	Brushed Platinum	36 425 970-06 0010
	Platinum	36 425 970-08 0010
	Dark Chrome	36 425 970-19 0010
	Light Gold	36 425 970-26 0010
	Brushed Light Gold	36 425 970-27 0010
	Brushed Durabronze (23kt Gold)	36 425 970-28 0010
	Matte Black	36 425 970-33 0010
	Brushed Bronze	36 425 970-42 0010
	Brushed Champagne (22kt Gold)	36 425 970-46 0010
	Brushed Chrome	36 425 970-93 0010
	Brushed Dark Platinum	36 425 970-99 0010

Required miscellaneous



Concealed thermostat for one- and two-way outlets -
 • max. recess depth 136 mm
 • min. recess depth 80 mm

35 426 970-90 0010

Recommended miscellaneous



xGRID Attachment set for integrating in the dry wall construction -

12 340 970 90

Required miscellaneous

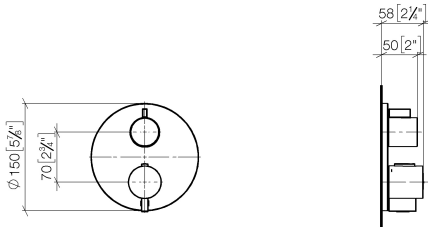


xGRID Installation track 555 mm - 12 360 970 90

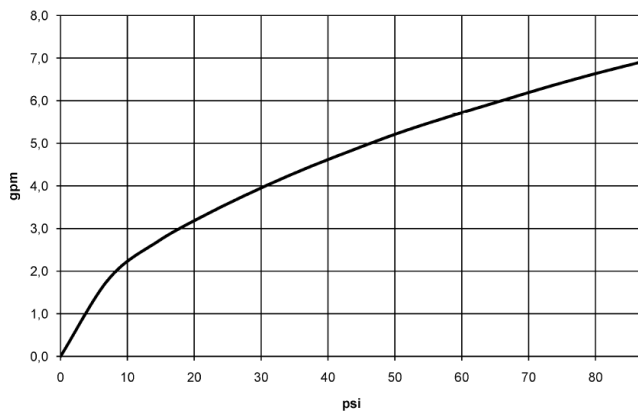
Concealed thermostat with one function volume control - Champagne (22kt Gold)

META

36 425 970
mm [inches]



Flow rate chart



Codes & Standards

ADA

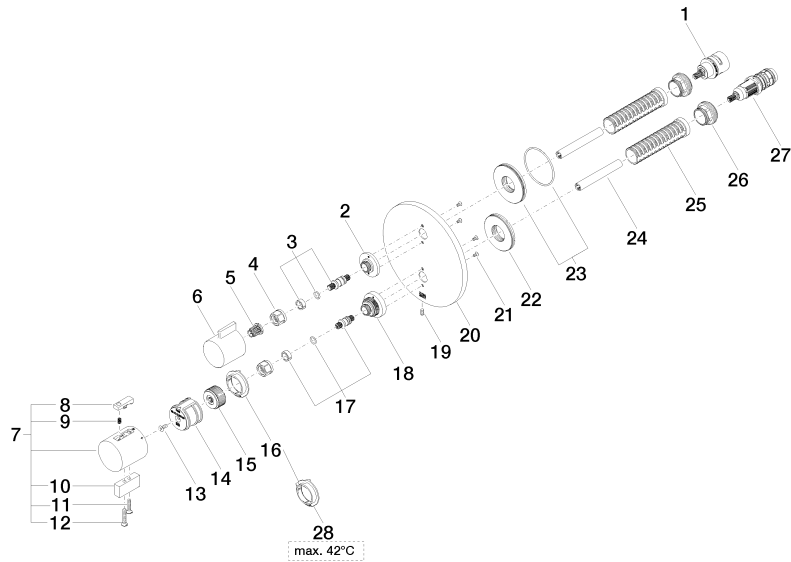
ASME
A112.18.1/CSA
B125.1

Concealed thermostat with one function volume control - Champagne (22kt Gold)

META

36 425 970

Product version from 6/30/2022





Concealed thermostat with one function volume control - Champagne (22kt Gold)

META

36 425 970

Spare parts list

Product version from 6/30/2022