

## Concealed thermostat with two function volume control - Brushed Platinum

SERIES SPECIFIC

36 426 670 Product version up to 8/24/2020



- rotary diverter with volume control and shut-off function
- cover plate 150 x 90 mm
- temperature control handle with safety limit stop at 38°C
- hot water temperature limiter, can be preset
- single flow function only

	Brushed Platinum	36 426 670-06 0010
	Chrome	36 426 670-00 0010
	Platinum	36 426 670-08 0010
	Dark Chrome	36 426 670-19 0010
	Brushed Light Gold	36 426 670-27 0010
	Brushed Durabrass (23kt Gold)	36 426 670-28 0010
	Matte Black	36 426 670-33 0010
	Brushed Champagne (22kt Gold)	36 426 670-46 0010
	Champagne (22kt Gold)	36 426 670-47 0010
	Brushed Chrome	36 426 670-93 0010
	Brushed Dark Platinum	36 426 670-99 0010

### Required miscellaneous



#### Concealed thermostat for one- and two-way outlets -

- max. recess depth 136 mm
- min. recess depth 80 mm

35 426 970-90 0010

### Recommended miscellaneous



#### xGRID Attachment set for integrating in the dry wall construction -

12 340 970 90

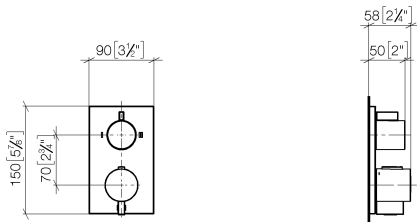
### Required miscellaneous



xGRID Installation track 555 mm - 12 360 970 90

36 426 670    Product version up to 8/24/2020

mm [inches]



Codes & Standards

ADA

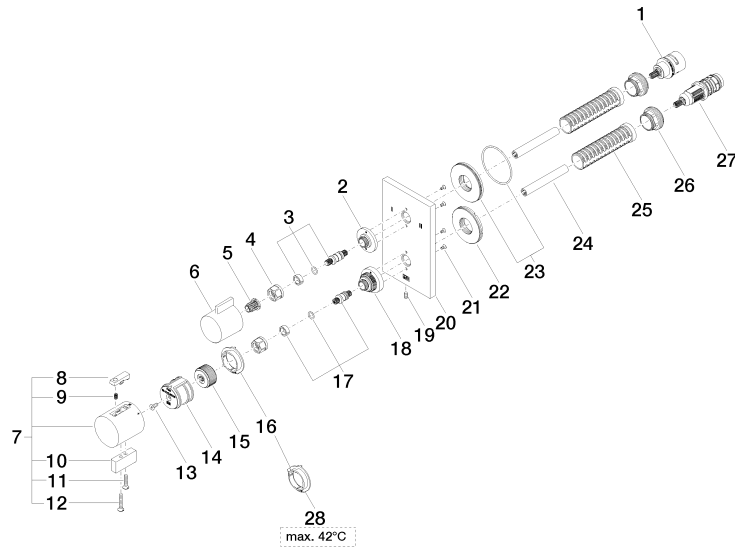
ASME A112.18.1

California Energy  
Commission  
(CEC)

cUPC

Certificates and sustainability

IAPMO\_4976 (





## Concealed thermostat with two function volume control - Brushed Platinum

SERIES SPECIFIC

36 426 670 Product version up to 8/24/2020

### Spare parts list

No.	Item Number	Name	Quantity used	Delivery time
6	09 20 67 006-06	handle	1.00	10
28	09 28 10 189 90	regulator	1.00	2
16	09 28 10 190 90	regulator	1.00	2
21	09 30 30 157 90	screw	4.00	2
26	09 24 04 257 90	nut	2.00	2
12	09 30 30 160-06	screw	1.00	10
20	09 11 02 263-06	plate	1.00	10
9	90 16 02 027 00 90	spring	1.00	2
11	09 30 30 159-06	screw	1.00	10
1	90 90 03 163 00 90	diverter	1.00	2
27	90 15 02 013 00 90	cartridge	1.00	2
23	90 30 01 190 00 90	disc	1.00	2
5	90 12 12 002 00 90	fixing cap	1.00	2
7	04 17 33 006 00-06	handle	1.00	60
15	09 12 12 054 90	base	1.00	2
2	09 12 12 053-06	base	1.00	10
10	09 20 33 006-06	handle	1.00	10
22	09 30 01 296 90	disc	1.00	2
19	09 31 11 134 90	pin	1.00	2
18	09 12 12 051-06	base	1.00	10
24	90 23 01 124 00 90	sleeve	2.00	2
25	90 18 40 077 01 90	spindle	2.00	2
4	90 23 30 023 00 90	nut	2.00	2
13	90 30 30 124 00 90	screw	1.00	2
3	04 29 06 111 01-00	spindle	1.00	10
17	04 29 06 024 01-00	spindle	1.00	10
14	90 12 12 052 00 90	base	1.00	2
8	90 21 33 011 00-13	handle	1.00	2