

Concealed thermostat with two function volume control - Champagne (22kt Gold)

IMO

36 426 670



- rotary diverter with volume control and shut-off function
- cover plate 150 x 90 mm
- temperature control handle with safety limit stop at 38°C
- hot water temperature limiter, can be preset

Fits: IMO, MEM, CL.1, CYO

	Champagne (22kt Gold)	36 426 670-47 0010
	Chrome	36 426 670-00 0010
	Brushed Platinum	36 426 670-06 0010
	Platinum	36 426 670-08 0010
	Dark Chrome	36 426 670-19 0010
	Brushed Durabronze (23kt Gold)	36 426 670-28 0010
	Matte Black	36 426 670-33 0010
	Brushed Champagne (22kt Gold)	36 426 670-46 0010
	Brushed Chrome	36 426 670-93 0010
	Brushed Dark Platinum	36 426 670-99 0010

Required miscellaneous



Concealed thermostat with built-in isolators - 35 426 970-90 0010

- max. recess depth 136 mm
- min. recess depth 80 mm

Recommended miscellaneous



xGRID Attachment set for integrating in the dry wall construction - 12 340 970 90

Required miscellaneous



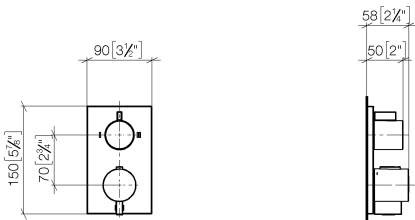
xGRID Installation track 555 mm - 12 360 970 90



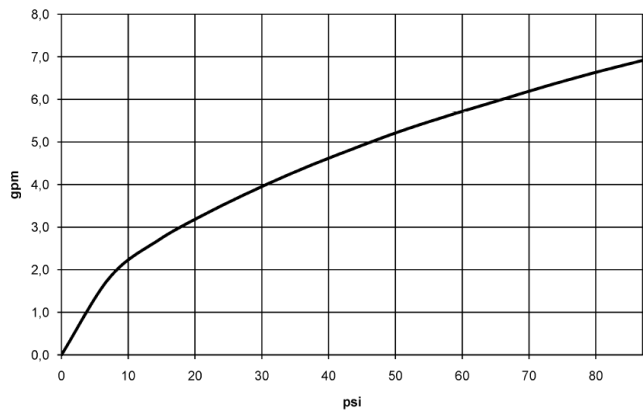
Concealed thermostat with two function volume control - Champagne (22kt Gold)

IMO

36 426 670
mm [inches]



Flow rate chart



Codes & Standards

ADA	ASME A112.18.1/CSA B125.1	California Energy Commission (CEC)
-----	---------------------------------	--



Concealed thermostat with two function volume control - Champagne (22kt Gold)

IMO

36 426 670

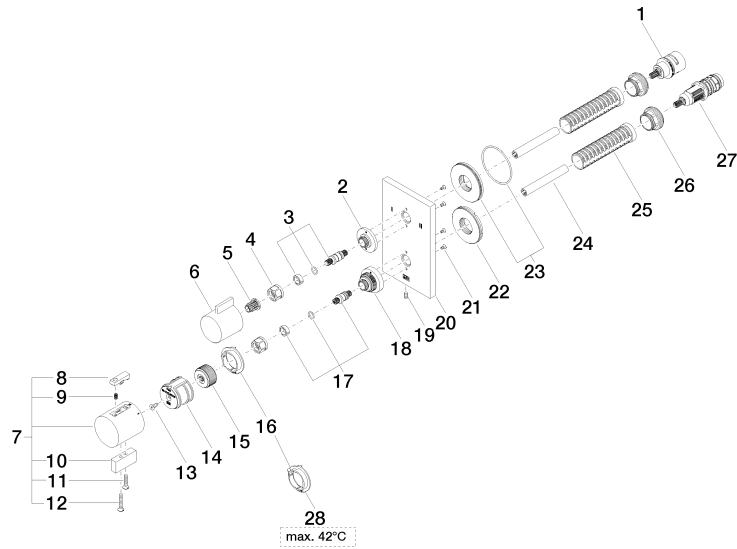
Certificates

IAPMO_4976 (3).

Concealed thermostat with two function volume control - Champagne (22kt Gold)

IMO

36 426 670





Concealed thermostat with two function volume control - Champagne (22kt Gold)

IMO

36 426 670

Spare parts list

No.	Item Number	Name	Quantity used	Delivery time
1	90 90 03 163 00 90	diverter	1	2
2	09 12 12 053-47	base	1	30
3	04 29 06 111 01-00	spindle	1	10
4	90 23 30 023 00 90	nut	2	2
5	90 12 12 002 00 90	fixing cap	1	2
6	09 20 67 006-47	handle	1	30
7	04 17 33 006 00-47	handle	1	30
8	90 21 33 011 00-13	handle	1	30
9	90 16 02 027 00 90	spring	1	2
10	09 20 33 006-47	handle	1	30
11	09 30 30 159-47	screw	1	30
12	09 30 30 160-47	screw	1	30
13	90 30 30 124 00 90	screw	1	2
14	90 12 12 052 00 90	base	1	2
15	09 12 12 054 90	base	1	2
16	09 28 10 190 90	regulator	1	2
17	04 29 06 024 01-00	spindle	1	10
18	09 12 12 051-47	base	1	30
19	09 31 11 134 90	pin	1	2
20	09 11 02 263-47	plate	1	60
21	09 30 30 157 90	screw	4	2
22	09 30 01 296 90	disc	1	2
23	90 30 01 190 00 90	disc	1	2
24	90 23 01 124 00 90	sleeve	2	2
25	90 18 40 077 01 90	spindle	2	2
26	09 24 04 257 90	nut	2	2
27	90 15 02 013 00 90	cartridge	1	2
28	09 28 10 189 90	regulator	1	2