





LULU Concealed thermostat with two function volume control - Brushed Platinum


LULU

|   |  |   |                    |
|---|--|---|--------------------|
| 36 426 710    Product version up to 8/24/2020                                     |  |   |                    |
|  | <ul style="list-style-type: none"><li>● rotary diverter with volume control and shut-off function</li><li>● cover plate 150 x 90 mm</li><li>● temperature control handle with safety limit stop at 38°C</li><li>● hot water temperature limiter, can be preset</li><li>● single flow function only</li></ul> |  | Brushed Platinum   |
|   |  |   | 36 426 710-06 0010 |
|   |  |   |                    |
|   |  |  | Chrome             |
|   |  |   | 36 426 710-00 0010 |


Required miscellaneous

|   |   |               |
|---|---|---------------|
|  | <b>Concealed thermostat for one- and two-way outlets -</b>  | 35 426 970-90 |
|   | <ul style="list-style-type: none"> <li>• max. recess depth 136 mm</li> <li>• min. recess depth 80 mm</li> </ul> | 0010          |

Required miscellaneous

|   |  |               |
|---|--|---------------|
|  | <b>xGRID Installation track 555 mm -</b> | 12 360 970 90 |
|---|--|---------------|

Recommended miscellaneous

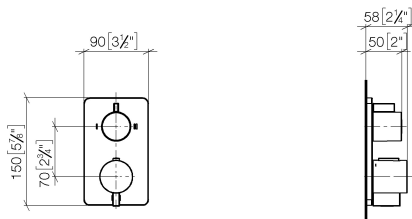
|   |  |               |
|---|--|---------------|
|  | <b>xGRID Attachment set for integrating in the dry wall construction -</b> | 12 340 970 90 |
|---|--|---------------|



LULU Concealed thermostat with two function volume control - Brushed  
Platinum

LULU

36 426 710    Product version up to 8/24/2020  
mm [inches]



Codes & Standards

|     |                |  |      |
|-----|----------------|--|------|
| ADA | ASME A112.18.1 | California Energy<br>Commission<br>(CEC) | cUPC |
|-----|----------------|--|------|

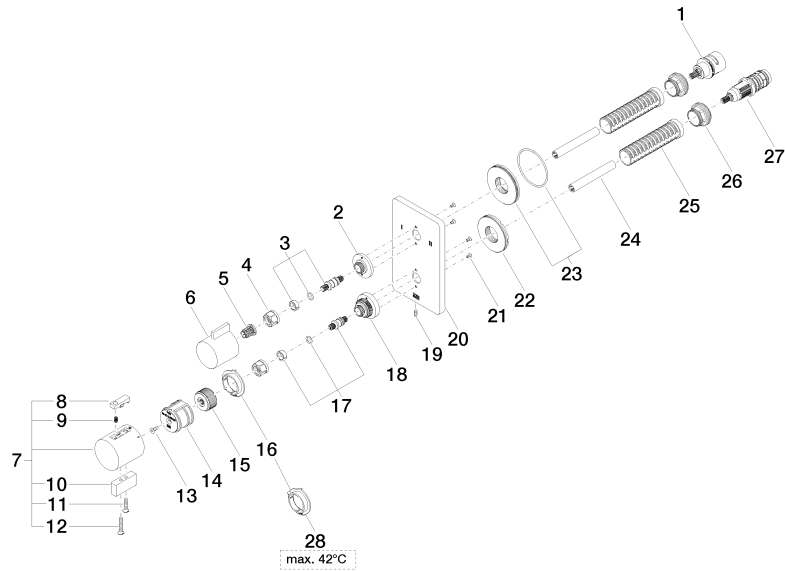
Certificates and sustainability

IAPMO\_4976 (

# LULU Concealed thermostat with two function volume control - Brushed Platinum

LULU

36 426 710 Product version up to 8/24/2020





## LULU Concealed thermostat with two function volume control - Brushed Platinum

LULU

36 426 710 Product version up to 8/24/2020

### Spare parts list

| No. | Item Number        | Name       | Quantity used | Delivery time |
|-----|--------------------|------------|---------------|---------------|
| 5   | 90 12 12 002 00 90 | fixing cap | 1.00          | 2             |
| 15  | 09 12 12 054 90    | base       | 1.00          | 2             |
| 19  | 09 31 11 134 90    | pin        | 1.00          | 2             |
| 28  | 09 28 10 189 90    | regulator  | 1.00          | 2             |
| 9   | 90 16 02 027 00 90 | spring     | 1.00          | 2             |
| 16  | 09 28 10 190 90    | regulator  | 1.00          | 2             |
| 2   | 09 12 12 053-06    | base       | 1.00          | 10            |
| 23  | 90 30 01 190 00 90 | disc       | 1.00          | 2             |
| 6   | 09 20 67 006-06    | handle     | 1.00          | 10            |
| 10  | 09 20 33 006-06    | handle     | 1.00          | 10            |
| 18  | 09 12 12 051-06    | base       | 1.00          | 10            |
| 12  | 09 30 30 160-06    | screw      | 1.00          | 10            |
| 27  | 90 15 02 013 00 90 | cartridge  | 1.00          | 2             |
| 1   | 90 90 03 163 00 90 | diverter   | 1.00          | 2             |
| 21  | 09 30 30 157 90    | screw      | 4.00          | 2             |
| 26  | 09 24 04 257 90    | nut        | 2.00          | 2             |
| 20  | 09 11 02 264-06    | plate      | 1.00          | 60            |
| 11  | 09 30 30 159-06    | screw      | 1.00          | 10            |
| 7   | 90 17 33 004 00-06 | handle     | 1.00          | 10            |
| 22  | 09 30 01 296 90    | disc       | 1.00          | 2             |
| 4   | 90 23 30 023 00 90 | nut        | 2.00          | 2             |
| 25  | 90 18 40 077 01 90 | spindle    | 2.00          | 2             |
| 3   | 04 29 06 111 01-00 | spindle    | 1.00          | 10            |
| 24  | 90 23 01 124 00 90 | sleeve     | 2.00          | 2             |
| 13  | 90 30 30 124 00 90 | screw      | 1.00          | 2             |
| 17  | 04 29 06 024 01-00 | spindle    | 1.00          | 10            |
| 14  | 90 12 12 052 00 90 | base       | 1.00          | 2             |
| 8   | 90 21 33 011 00-13 | handle     | 1.00          | 2             |