



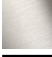




**LISSÉ Concealed thermostat with three function volume control - Brushed Chrome**

LISSÉ

36 428 845    Product version from 3/13/2017 to 3/21/2019



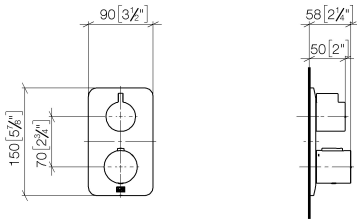
- rotary diverter with volume control and shut-off function
- cover plate 150 x 90 mm
- hot water temperature limiter, can be preset
- temperature control handle with safety limit stop at 38°C
- single flow function only

	Brushed Chrome	36 428 845-93 0010
	Chrome	36 428 845-00 0010
	Brushed Platinum	36 428 845-06 0010
	Dark Chrome	36 428 845-19 0010
	Brushed Light Gold	36 428 845-27 0010
	Matte Black	36 428 845-33 0010
	Brushed Dark Platinum	36 428 845-99 0010

**LISSE Concealed thermostat with three function volume control - Brushed Chrome**

LISSE

36 428 845    Product version from 3/13/2017 to 3/21/2019  
mm [inches]



**Codes & Standards**

ADA	ASME A112.18.1	California Energy Commission (CEC)	cUPC
-----	----------------	------------------------------------	------

**Certificates and sustainability**

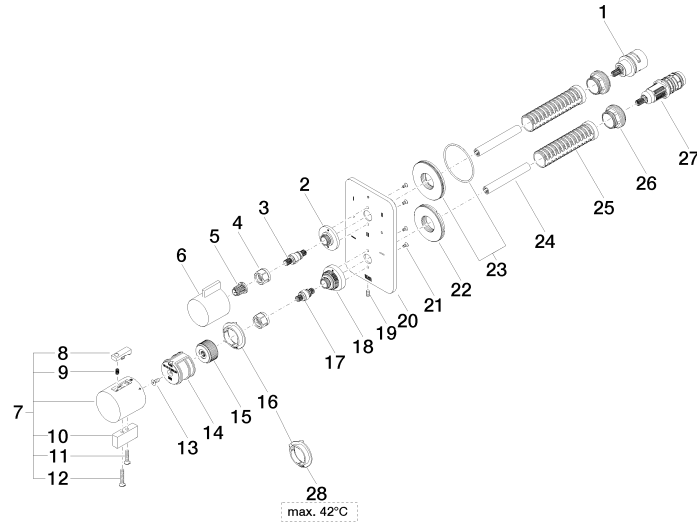
IAPMO\_4976 (

## LISSÉ Concealed thermostat with three function volume control - Brushed Chrome

LISSÉ

36 428 845 Product version from 3/13/2017 to 3/21/2019

Parts for other  
finishes can be found  
here: [Chrome](#)





## LISSÉ Concealed thermostat with three function volume control - Brushed Chrome

LISSÉ

36 428 845 Product version from 3/13/2017 to 3/21/2019

### Spare parts list

No.	Item Number	Name	Quantity used	Delivery time
6	09 20 67 006-93	handle	1.00	20
20	09 11 02 319-93	plate	1.00	20
15	09 12 12 054 90	base	1.00	2
2	09 12 12 053-93	base	1.00	20
27	90 15 02 013 00 90	cartridge	1.00	2
23	90 30 01 190 00 90	disc	1.00	2
26	09 24 04 257 90	nut	2.00	2
5	90 12 12 002 00 90	fixing cap	1.00	2
22	09 30 01 296 90	disc	1.00	2
12	09 30 30 160-93	screw	1.00	20
16	09 28 10 190 90	regulator	1.00	2
10	09 20 33 006-93	handle	1.00	20
21	09 30 30 157 90	screw	4.00	2
28	09 28 10 189 90	regulator	1.00	2
19	09 31 11 134 90	pin	1.00	2
18	09 12 12 051-93	base	1.00	20
11	09 30 30 159-93	screw	1.00	20
9	90 16 02 027 00 90	spring	1.00	2
7	04 17 33 006 00-93	handle	1.00	60
1	90 90 03 170 00 90	diverter	1.00	2
17	04 29 06 024 01-00	spindle	1.00	10
14	90 12 12 052 00 90	base	1.00	2
3	04 29 06 111 01-00	spindle	1.00	10
13	90 30 30 124 00 90	screw	1.00	2
25	90 18 40 077 01 90	spindle	2.00	2
4	90 23 30 023 00 90	nut	2.00	2
24	90 23 01 124 00 90	sleeve	2.00	2
8	90 21 33 011 00-13	handle	1.00	2