

## WATER FAN vertical Concealed body spray - Brushed Dark Brass

SERIES-VARIOUS

36 513 979 Product version from 10/1/2023



- AQUAPRESSURE FLOW, max. flow rate 6.8 l/min (at 3 bar)
- water jet adjustable

### Technical data:

- cover plate 240 x 60 mm
- 1/2" connection

### Notes:

- This product reduces water consumption by 28% (compared to requirements of EPAct '92)
- This product can contribute to Water Use Reduction in LEED® Green Building Rating
- This product can help a building meet the requirements of Green Building Rating Systems, e.g. LEED®, BREEAM®, DGNB

	Brushed Dark Brass	36 513 979-39 0010
	Chrome	36 513 979-00 0010
	Brushed Platinum	36 513 979-06 0010
	Platinum	36 513 979-08 0010
	Dark Chrome	36 513 979-19 0010
	Light Gold	36 513 979-26 0010
	Brushed Light Gold	36 513 979-27 0010
	Brushed Durabrass (23kt Gold)	36 513 979-28 0010
	Matte Black	36 513 979-33 0010
	Brushed Bronze	36 513 979-42 0010
	Brushed Champagne (22kt Gold)	36 513 979-46 0010
	Champagne (22kt Gold)	36 513 979-47 0010
	Brushed Chrome	36 513 979-93 0010
	Brushed Dark Platinum	36 513 979-99 0010

### Required miscellaneous



- Concealed wall installation box -** 35 206 970-90 0010
- min. recess depth 100 mm
  - max. recess depth 173 mm

### Required miscellaneous



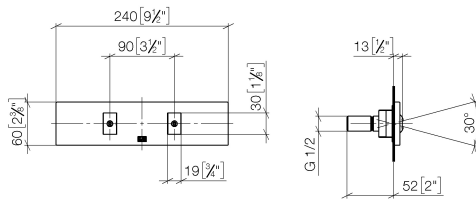
- xGRID Installation track 555 mm -** 12 360 970 90

### Recommended miscellaneous



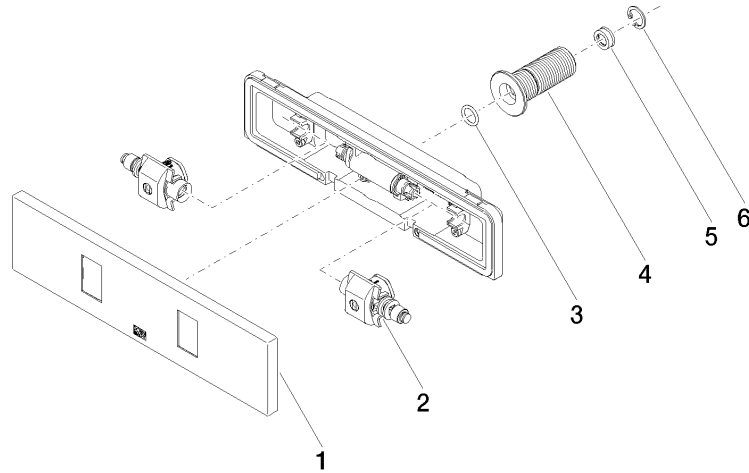
- xGRID Attachment set for integrating in the dry wall construction -** 12 340 970 90

mm [inches]



## Codes & Standards

California Energy  
Commission  
(CEC)



## Spare parts list

No.	Item Number	Name	Quantity used	Delivery time
	2 90 31 10 013 00 90	insert	1.00	2
	5 09 23 01 165 90	flow reducer	1.00	2
	3 09 14 10 003 90	seal	1.00	2
	6 09 16 01 014 90	ring	1.00	2
	1 90 27 99 002 00-39	insert	1.00	30
	4 09 24 05 015 90	nipple	1.00	2