

WATER CURVE Concealed body spray - Brushed Durabrass (23kt Gold)

36 514 979 Product version from 10/1/2023



- AQUAPRESSURE FLOW, max. flow rate 6.8 l/min (at 3 bar)
- water jet adjustable
- cover plate 120 x 60 mm
- 1/2" connection
- This product reduces water consumption by 28% (compared to requirements of EPAct '92)
- This product can contribute to Water Use Reduction in LEED® Green Building Rating
- This product can help a building meet the requirements of Green Building Rating Systems, e.g. LEED®, BREEAM®, DGNB

| | | |
|---|-------------------------------|--------------------|
|  | Brushed Durabrass (23kt Gold) | 36 514 979-28 0010 |
|  | Chrome | 36 514 979-00 0010 |
|  | Brushed Platinum | 36 514 979-06 0010 |
|  | Platinum | 36 514 979-08 0010 |
|  | Dark Chrome | 36 514 979-19 0010 |
|  | Light Gold | 36 514 979-26 0010 |
|  | Brushed Light Gold | 36 514 979-27 0010 |
|  | Matte Black | 36 514 979-33 0010 |
|  | Brushed Bronze | 36 514 979-42 0010 |
|  | Brushed Champagne (22kt Gold) | 36 514 979-46 0010 |
|  | Champagne (22kt Gold) | 36 514 979-47 0010 |
|  | Brushed Chrome | 36 514 979-93 0010 |
|  | Brushed Dark Platinum | 36 514 979-99 0010 |

Required miscellaneous

Concealed adapter -

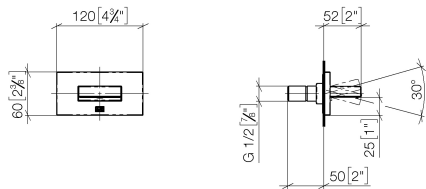
35 080 970-90
0010



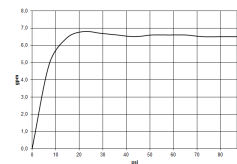
WATER CURVE Concealed body spray - Brushed Durabross (23kt Gold)

36 514 979 Product version from 10/1/2023

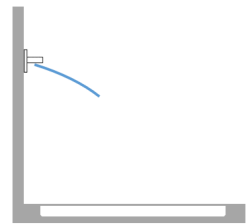
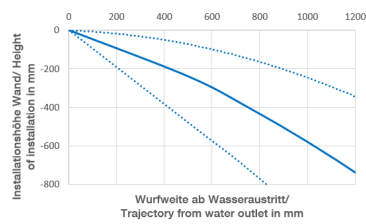
mm [inches]



Flow rate chart



Trajectory diagram

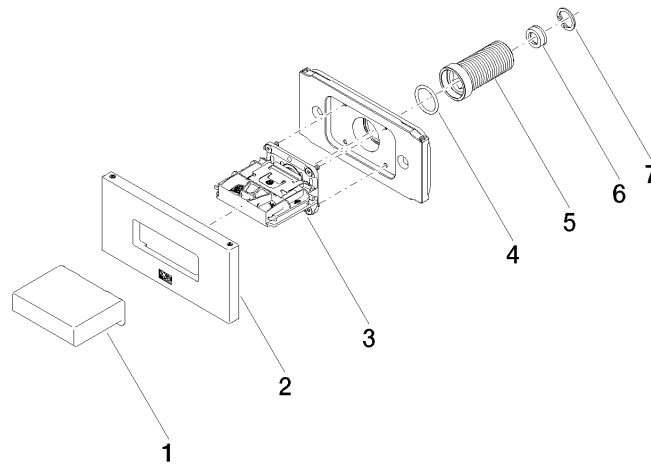


Codes & Standards

| | |
|---------------|-------------------|
| ASME | California Energy |
| A112.18.1/CSA | Commission |
| B125.1 | (CEC) |

WATER CURVE Concealed body spray - Brushed Durabross (23kt Gold)

36 514 979 Product version from 10/1/2023



Spare parts list

| No. | Item Number | Name | Quantity used | Delivery time |
|-----|--------------------|--------------|---------------|---------------|
| 1 | 09 17 01 230-28 | casing | 1 | 20 |
| 2 | 90 27 97 041 00-28 | rosette | 1 | 20 |
| 3 | 90 29 03 088 00 90 | insert | 1 | 2 |
| 4 | 90 14 10 010 00 90 | seal | 1 | 2 |
| 5 | 09 24 04 336 90 | nipple | 1 | 2 |
| 6 | 09 23 01 165 90 | flow reducer | 1 | 2 |
| 7 | 09 16 01 014 90 | ring | 1 | 2 |