

WATER CURVE Concealed body spray - Brushed Bronze

SERIES-VARIOUS

36 514 979

Product version from 10/1/2023



- AQUAPRESSURE FLOW, max. flow rate 6.8 l/min (at 3 bar)
- water jet adjustable
- Function from: l/min

Technical data:

- cover plate 120 x 60 mm
- 1/2" connection

Notes:

- This product reduces water consumption by 28% (compared to requirements of EPAct '92)
- This product can help a building meet the requirements of Green Building Rating Systems, e.g. LEED®, BREEAM®, DGNB
- This product can contribute to Water Use Reduction in LEED® Green Building Rating

	Brushed Bronze	36 514 979-42 0010
	Chrome	36 514 979-00 0010
	Brushed Platinum	36 514 979-06 0010
	Platinum	36 514 979-08 0010
	Dark Chrome	36 514 979-19 0010
	Light Gold	36 514 979-26 0010
	Brushed Light Gold	36 514 979-27 0010
	Brushed Durabrass (23kt Gold)	36 514 979-28 0010
	Matte Black	36 514 979-33 0010
	Brushed Dark Brass	36 514 979-39 0010
	Brushed Champagne (22kt Gold)	36 514 979-46 0010
	Champagne (22kt Gold)	36 514 979-47 0010
	Brushed Chrome	36 514 979-93 0010
	Brushed Dark Platinum	36 514 979-99 0010

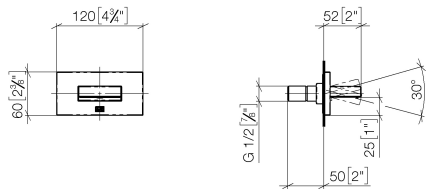
Required miscellaneous

Concealed adapter -

35 080 970-90 0010



mm [inches]

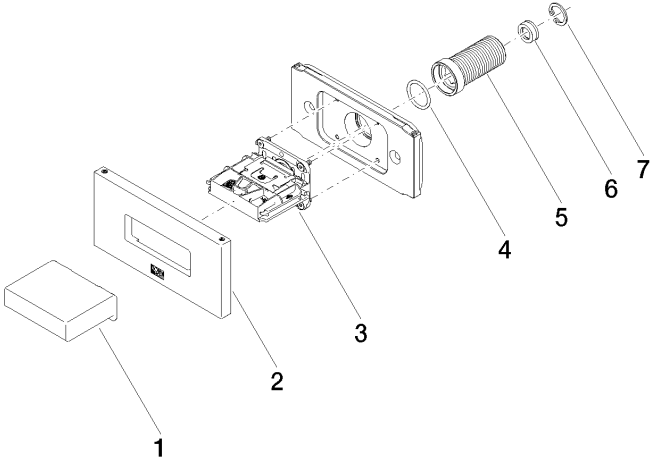


Codes & Standards

ASME A112.18.1	California Energy Commission (CEC)	cUPC
----------------	--	------

Certificates and sustainability

IAPMO_4976 (



Spare parts list

No.	Item Number	Name	Quantity used	Delivery time
2	90 27 97 041 00-42	rosette	1.00	30
5	09 24 04 336 90	nipple	1.00	2
7	09 16 01 014 90	ring	1.00	2
3	90 29 03 088 00 90	insert	1.00	2
6	09 23 01 165 90	flow reducer	1.00	2
1	09 17 01 230-42	casing	1.00	60
4	90 14 10 010 00 90	seal	1.00	2