

TARA Wall valve clockwise closing 1/2" - Platinum

TARA

36 607 892

- rosette Ø 55 mm
- head part with cut-to-length spindle and sleeve
- WRAS 2011026, 2010066



| | | |
|--|-------------------------------------|---------------|
|  | Platinum | 36 607 892-08 |
|  | Chrome | 36 607 892-00 |
|  | Brushed Platinum | 36 607 892-06 |
|  | Dark Chrome | 36 607 892-19 |
|  | Brushed Durabronze (23kt Gold) | 36 607 892-28 |
|  | Matte Black | 36 607 892-33 |
|  | Brushed Bronze | 36 607 892-42 |
|  | Brushed Champagne (22kt Gold) | 36 607 892-46 |
|  | Champagne (22kt Gold) | 36 607 892-47 |
|  | Brushed Chrome | 36 607 892-93 |
|  | Brushed Dark Platinum | 36 607 892-99 |

Required miscellaneous



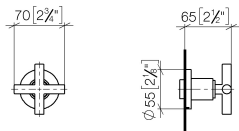
Wall valve 1/2" -

- max. recess depth 145 mm
- min. recess depth 85 mm

35 607 970-90
0010

36 607 892

mm [inches]

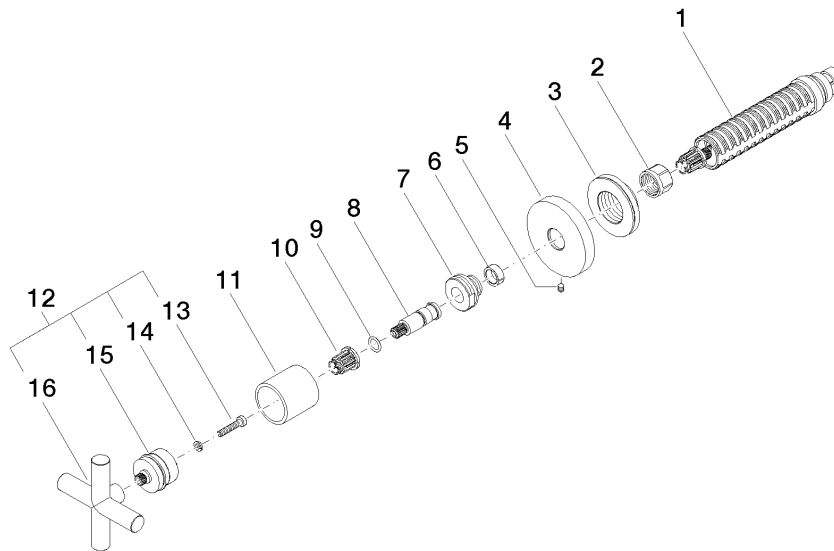


| Codes & Standards | | | | |
|------------------------|-----------------------------|---------------------------|----------|--------|
| ADA | ASME A112.18.1 | ASME A112.18.1/CSA B125.1 | cUPC | |
| DIN 4109 | EN 1111 | EN 200 | ISO 3822 | |
| Scottish Water Byelaws | UK Water Supply Regulations | Ü-Zeichen | | |
| Certificates | | | | |
| IAPMO_4976 | DVGW_DW-6501DN0 | WRAS_2010 | LGA_29 | LGA_29 |
| DVGW_DW-6512DN0 | WRAS_2011 | | | |

36 607 892

Product version up to 10/27/2020

Product version from 10/27/2020





TARA Wall valve clockwise closing 1/2" - Platinum

TARA

36 607 892

Spare parts list

Product version up to 10/27/2020

Product version from 10/27/2020

| No. | Item Number | Name | Quantity used | Delivery time |
|-----|--------------------|------|---------------|---------------|
| | 90 90 03 143 00 90 | top | 16 | 2 |