

TARA Wall valve clockwise closing 1/2" - Brushed Bronze

TARA

36 607 892

- rosette Ø 55 mm
- head part with cut-to-length spindle and sleeve
- WRAS 2011026, 2010066



| | | |
|--|--------------------------------|---------------|
|  | Brushed Bronze | 36 607 892-42 |
|  | Chrome | 36 607 892-00 |
|  | Brushed Platinum | 36 607 892-06 |
|  | Platinum | 36 607 892-08 |
|  | Dark Chrome | 36 607 892-19 |
|  | Brushed Durabronze (23kt Gold) | 36 607 892-28 |
|  | Matte Black | 36 607 892-33 |
|  | Brushed Champagne (22kt Gold) | 36 607 892-46 |
|  | Champagne (22kt Gold) | 36 607 892-47 |
|  | Brushed Chrome | 36 607 892-93 |
|  | Brushed Dark Platinum | 36 607 892-99 |

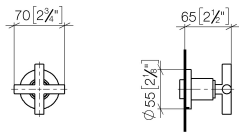


TARA Wall valve clockwise closing 1/2" - Brushed Bronze

TARA

36 607 892

mm [inches]

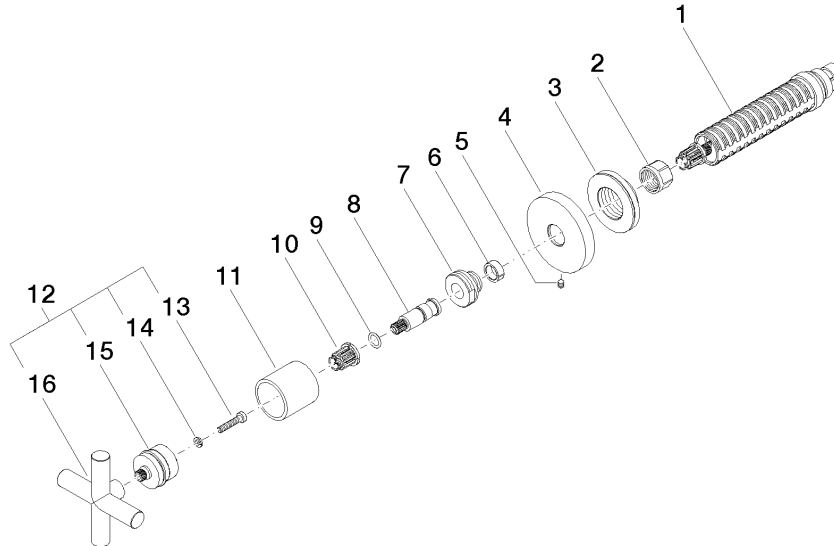


| Codes & Standards | | | |
|-------------------|---------------------------------|--------------------------------|-----------|
| ADA | ASME A112.18.1/CSA B125.1 | DIN 4109 | EN 1111 |
| ISO 3822 | Scottish Water Byelaws | UK Water Supply Regulations | Ü-Zeichen |

| Certificates | | | |
|--------------|--------|---------------------|-----------|
| WRAS_2010 | LGA_29 | DVGW_DW- 6512DN0 | WRAS_2011 |

Product version from 10/27/2020

Parts for other
finishes can be found
here: [Chrome](#)





TARA Wall valve clockwise closing 1/2" - Brushed Bronze

TARA

36 607 892

Spare parts list

Product version from 10/27/2020