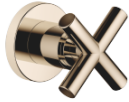


## TARA Wall valve clockwise closing 1/2" - Champagne (22kt Gold)

TARA

36 607 892

- rosette Ø 55 mm
- head part with cut-to-length spindle and sleeve
- WRAS 2011026, 2010066



	Champagne (22kt Gold)	36 607 892-47
	Chrome	36 607 892-00
	Brushed Platinum	36 607 892-06
	Platinum	36 607 892-08
	Dark Chrome	36 607 892-19
	Brushed Durabronze (23kt Gold)	36 607 892-28
	Matte Black	36 607 892-33
	Brushed Bronze	36 607 892-42
	Brushed Champagne (22kt Gold)	36 607 892-46
	Brushed Chrome	36 607 892-93
	Brushed Dark Platinum	36 607 892-99

### Required miscellaneous



#### Wall valve 1/2" -

- max. recess depth 145 mm
- min. recess depth 85 mm

35 607 970-90  
0010

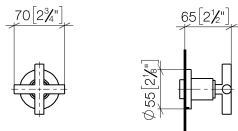


TARA Wall valve clockwise closing 1/2" - Champagne (22kt Gold)

TARA

36 607 892

mm [inches]



Codes & Standards

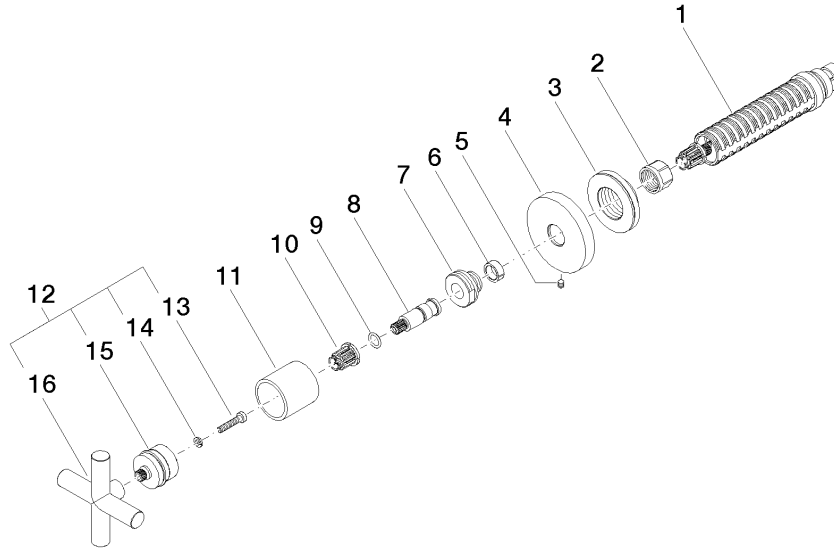
ADA	ASME A112.18.1/CSA B125.1	DIN 4109	EN 1111
EN 200	ISO 3822	Scottish Water Byelaws	UK Water Supply Regulations

Ü-Zeichen

Certificates

DVGW_DW- 6501DN0	WRAS_2010	LGA_29	DVGW_DW- 6512DN0	WRAS_2011
---------------------	-----------	--------	---------------------	-----------

**Product version from 10/27/2020**





TARA Wall valve clockwise closing 1/2" - Champagne (22kt Gold)

TARA

36 607 892

## **Spare parts list**

**Product version from 10/27/2020**