

36 607 985 Product version from 6/1/2024



- rosette 60 x 60 mm
- head part with cut-to-length spindle and sleeve
- WRAS

	Brushed Platinum	36 607 985-06
	Chrome	36 607 985-00
	Platinum	36 607 985-08
	Dark Chrome	36 607 985-19
	Brushed Light Gold	36 607 985-27
	Brushed Durabrass (23kt Gold)	36 607 985-28
	Brushed Chrome	36 607 985-93
	Brushed Dark Platinum	36 607 985-99

Required miscellaneous



- | | |
|---------------------------|---------------|
| Wall valve 1/2" - | 35 607 970-90 |
| •max. recess depth 145 mm | 0010 |
| •min. recess depth 75 mm | |



SYMETRICS Wall valve anti-clockwise closing 1/2" - Brushed Platinum

SYMETRICS

36 607 985 Product version from 6/1/2024

mm [inches]

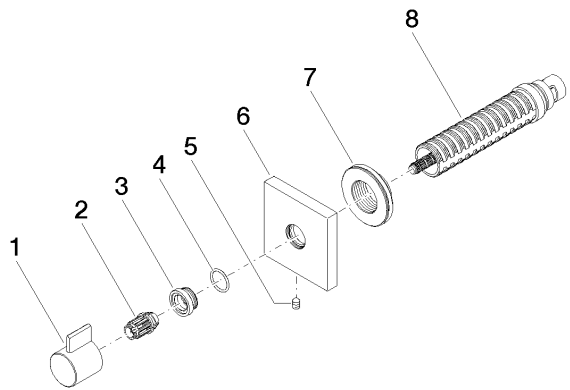


Codes & Standards

ADA	ASME A112.18.1	cUPC	DIN 4109
EN 1111	EN 200	ISO 3822	Scottish Water Byelaws
UK Water Supply Regulations	Ü-Zeichen		

Certificates and sustainability

DVGW_DW-6501DN0	WRAS_2011	LGA_29	WRAS_2010	DVGW_DW-6512DN0
LGA_29	IAPMO_4976 (



Spare parts list

No.	Item Number	Name	Quantity used	Delivery time
1	09 20 98 002-06	handle	1.00	10
2	09 12 12 005 90	fixing cap	1.00	2
3	09 12 12 043-06	base	1.00	10
4	09 14 10 017 90	seal	1.00	2
8	90 90 03 202 00 90	top	1.00	2
6	09 27 98 014-06	rosette	1.00	10
7	09 21 02 151 90	sleeve	1.00	2
5	90 31 11 004 00 90	pin	1.00	2