








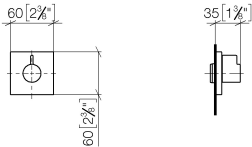
36 607 985    Product version from 6/1/2024



- rosette 60 x 60 mm
- head part with cut-to-length spindle and sleeve
- WRAS

|   |                                  |               |
|---|----------------------------------|---------------|
|  | Brushed Chrome                   | 36 607 985-93 |
|  | Chrome                           | 36 607 985-00 |
|  | Brushed Platinum                 | 36 607 985-06 |
|  | Platinum                         | 36 607 985-08 |
|  | Dark Chrome                      | 36 607 985-19 |
|  | Brushed Light Gold               | 36 607 985-27 |
|  | Brushed Durabrass<br>(23kt Gold) | 36 607 985-28 |
|  | Brushed Dark<br>Platinum         | 36 607 985-99 |

mm [inches]



Codes & Standards

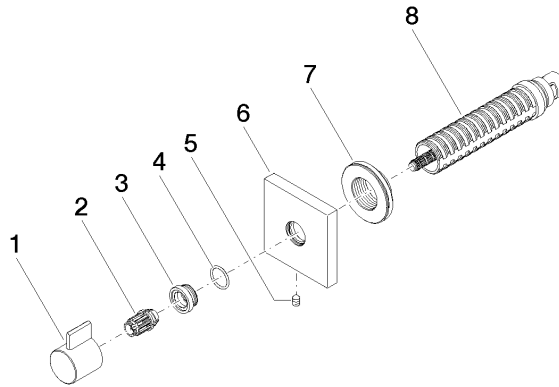
|                             |                |          |                        |
|-----------------------------|----------------|----------|------------------------|
| ADA                         | ASME A112.18.1 | cUPC     | DIN 4109               |
| EN 1111                     | EN 200         | ISO 3822 | Scottish Water Byelaws |
| UK Water Supply Regulations | Ü-Zeichen      |          |                        |

Certificates and sustainability

|                 |              |        |           |                 |
|-----------------|--------------|--------|-----------|-----------------|
| DVGW_DW-6501DN0 | WRAS_2011    | LGA_29 | WRAS_2010 | DVGW_DW-6512DN0 |
| LGA_29          | IAPMO_4976 ( |        |           |                 |

36 607 985 Product version from 6/1/2024

Parts for other  
finishes can be found  
here: [Chrome](#)



## Spare parts list

| No. | Item Number        | Name       | Quantity used | Delivery time |
|-----|--------------------|------------|---------------|---------------|
| 2   | 09 12 12 005 90    | fixing cap | 1.00          | 2             |
| 3   | 09 12 12 043-93    | base       | 1.00          | 20            |
| 4   | 09 14 10 017 90    | seal       | 1.00          | 2             |
| 1   | 09 20 98 002-93    | handle     | 1.00          | 20            |
| 8   | 90 90 03 202 00 90 | top        | 1.00          | 2             |
| 6   | 09 27 98 014-93    | rosette    | 1.00          | 20            |
| 7   | 09 21 02 151 90    | sleeve     | 1.00          | 2             |
| 5   | 90 31 11 004 00 90 | pin        | 1.00          | 2             |