

CYO Wall-mounted basin mixer without pop-up waste - Brushed Durabron (23kt Gold)

CYO

36 707 811



- 160mm projection
- fixed spout
- rectangular, air-enriched flow
- hole diameter valve 37 mm
- hole diameter spout 37 mm
- handle Ø 60mm
- max. flow 4.5 l/min
- lead-free
- This product can help a building meet the requirements of Green Building Rating Systems, e.g. LEED®, BREEAM®, DGNB
- WRAS 2111006

NOTE: The handle inserts must be ordered separately from the fittings!

NOTE: The handle inserts must be ordered separately from the fittings!

	Brushed Durabron (23kt Gold)	36 707 811-28
	Chrome	36 707 811-00
	Brushed Platinum	36 707 811-06
	Dark Chrome	36 707 811-19
	Platinum / Brushed Platinum	36 707 811-36
	Durabron / Brushed Durabron (23kt Gold)	36 707 811-38
	Brushed Dark Platinum	36 707 811-99

Required miscellaneous



Concealed wall-mounted mixer centred spout -

- max. recess depth 145 mm
- min. recess depth 85 mm

35 700 970-90
0010

Required miscellaneous



Concealed wall-mounted mixer variable positioning -

- max. recess depth 145 mm
- min. recess depth 85 mm

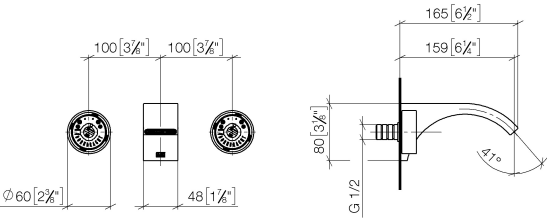
35 720 970-90
0010



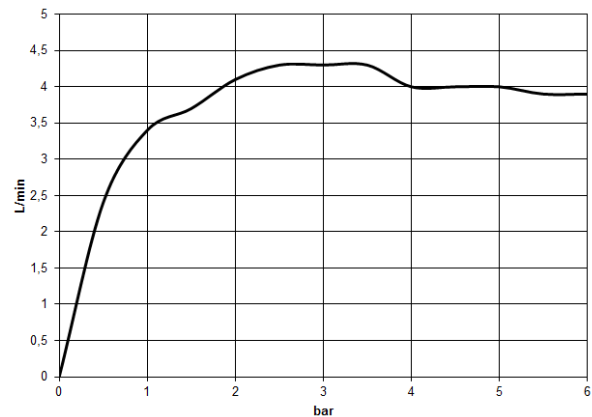
CYO Wall-mounted basin mixer without pop-up waste - Brushed Durabronz
(23kt Gold)

CYO

36 707 811
mm [inches]



Flow rate chart



Codes & Standards

California Energy
Commission
(CEC)
NSF61

DIN 4109

Scottish Water
Byelaws

ISO 3822

UK Water Supply
Regulations

NSF372

Ü-Zeichen



CYO Wall-mounted basin mixer without pop-up waste - Brushed Durabross
(23kt Gold)

CYO

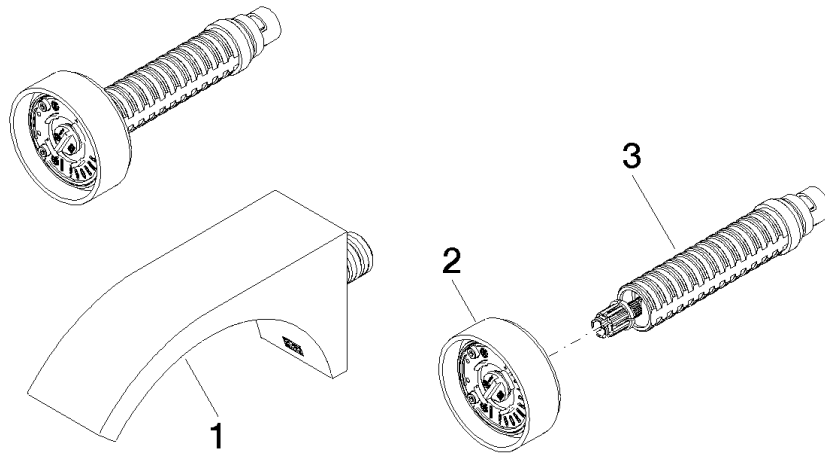
36 707 811
Certificates

WRAS_2111 IAPMO_6397 IAPMO_N-4976 LGA_38

**CYO Wall-mounted basin mixer without pop-up waste - Brushed Durabronz
(23kt Gold)**

CYO

36 707 811





CYO Wall-mounted basin mixer without pop-up waste - Brushed Durabrass
(23kt Gold)

CYO

36 707 811

Spare parts list

No.	Item Number	Name	Quantity used	Delivery time
	13 800 811-28	CYO Wall-mounted basin spout without pop-up waste - Brushed Durabrass (23kt Gold)	3	20