

TARA Wall-mounted basin mixer without pop-up waste - Chrome

TARA

36 707 882 Product version from 4/1/2024



- 160mm projection
- fixed spout
- circular, air-enriched flow
- hole diameter valve 40 mm
- hole diameter spout 40 mm
- rosette Ø 55 mm
- max. flow 4.5 l/min
- lead-free
- This product can help a building meet the requirements of Green Building Rating Systems, e.g. LEED®, BREEAM®, DGNB

| | | |
|--|-------------------------------|--------------------|
| | Chrome | 36 707 882-00 0010 |
| | Brushed Platinum | 36 707 882-06 0010 |
| | Platinum | 36 707 882-08 0010 |
| | Dark Chrome | 36 707 882-19 0010 |
| | Brushed Durabrass (23kt Gold) | 36 707 882-28 0010 |
| | Matte Black | 36 707 882-33 0010 |
| | Brushed Dark Brass | 36 707 882-39 0010 |
| | Brushed Bronze | 36 707 882-42 0010 |
| | Brushed Champagne (22kt Gold) | 36 707 882-46 0010 |
| | Champagne (22kt Gold) | 36 707 882-47 0010 |
| | Brushed Chrome | 36 707 882-93 0010 |
| | Brushed Dark Platinum | 36 707 882-99 0010 |

Required miscellaneous



- Concealed wall-mounted mixer centred spout -** 35 700 970-90 0010
- max. recess depth 145 mm
 - min. recess depth 85 mm

Required miscellaneous



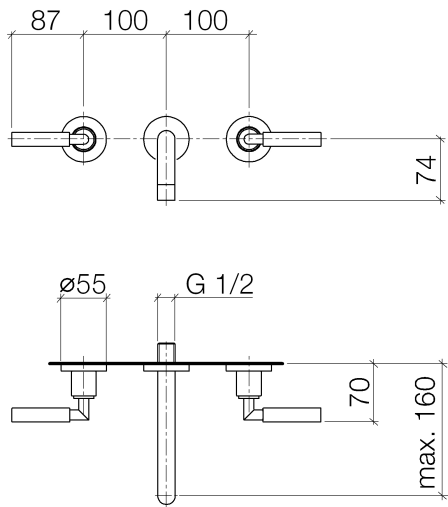
- Concealed wall-mounted mixer variable positioning -** 35 720 970-90 0010
- max. recess depth 145 mm
 - min. recess depth 85 mm

TARA Wall-mounted basin mixer without pop-up waste - Chrome

TARA

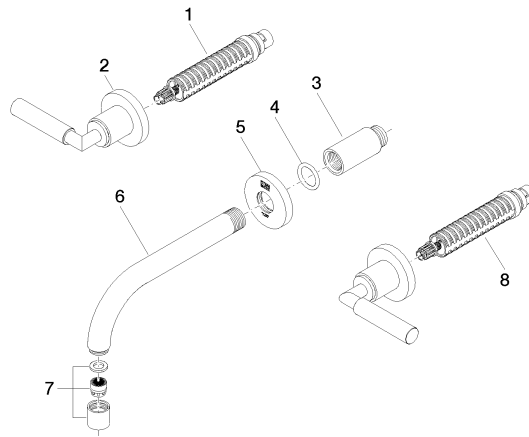
36 707 882

Product version from 4/1/2024



| Codes & Standards | | | |
|-------------------|----------------|------------------------------------|------------|
| ADA | ASME A112.18.1 | California Energy Commission (CEC) | cUPC |
| EPA WaterSense | NSF372 | NSF61 | WaterSense |

| Certificates and sustainability | | | |
|---------------------------------|------------|--------------|------------|
| IAPMO_N-4976 | IAPMO_6397 | IAPMO_4976 (| IAPMO_8834 |



Spare parts list

| No. | Item Number | Name | Quantity used | Delivery time |
|-----|--------------------|------------|---------------|---------------|
| 8 | 90 90 03 157 00 90 | top | 1.00 | 2 |
| 2 | 36 310 882-00 | connection | 2.00 | 10 |
| 5 | 09 27 22 501-00 | rosette | 1.00 | 10 |
| 1 | 90 90 03 156 00 90 | top | 1.00 | 2 |
| 3 | 09 24 03 081 10 90 | extension | 1.00 | 2 |
| 6 | 04 28 22 089 10-00 | spout | 1.00 | 10 |
| 7 | 90 23 01 019 02-00 | aerator | 1.00 | 10 |
| 4 | 90 14 10 026 00 90 | seal | 1.00 | 2 |