

TARA Wall-mounted basin mixer without pop-up waste - Brushed Durabrass (23kt Gold)

TARA

36 717 882 Product version from 4/1/2024



- 240mm projection
- fixed spout
- circular, air-enriched flow
- hole diameter valve 40 mm
- hole diameter spout 40 mm
- rosette Ø 55 mm
- max. flow 4.5 l/min
- lead-free
- This product can help a building meet the requirements of Green Building Rating Systems, e.g. LEED®, BREEAM®, DGNB

	Brushed Durabrass (23kt Gold)	36 717 882-28 0010
	Chrome	36 717 882-00 0010
	Brushed Platinum	36 717 882-06 0010
	Platinum	36 717 882-08 0010
	Dark Chrome	36 717 882-19 0010
	Matte Black	36 717 882-33 0010
	Brushed Dark Brass	36 717 882-39 0010
	Brushed Bronze	36 717 882-42 0010
	Brushed Champagne (22kt Gold)	36 717 882-46 0010
	Champagne (22kt Gold)	36 717 882-47 0010
	Brushed Chrome	36 717 882-93 0010
	Brushed Dark Platinum	36 717 882-99 0010

Required miscellaneous



- Concealed wall-mounted mixer centred spout -** 35 700 970-90 0010
- max. recess depth 145 mm
 - min. recess depth 85 mm

Required miscellaneous



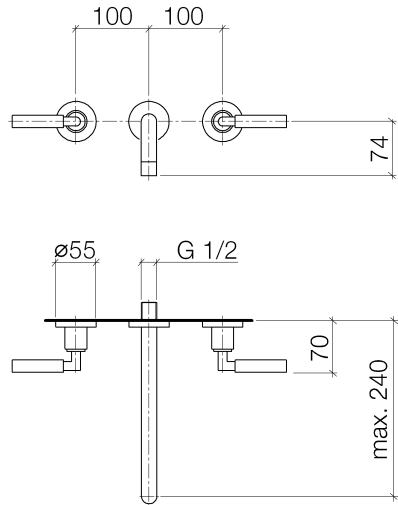
- Concealed wall-mounted mixer variable positioning -** 35 720 970-90 0010
- max. recess depth 145 mm
 - min. recess depth 85 mm



TARA Wall-mounted basin mixer without pop-up waste - Brushed Durabronze
(23kt Gold)

TARA

36 717 882 Product version from 4/1/2024

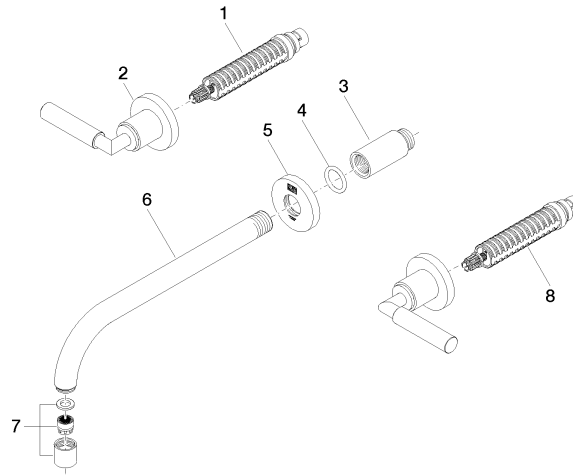


Codes & Standards

ADA	California Energy Commission (CEC)	NSF61
-----	--	-------

Certificates and sustainability

IAPMO_N-4976



Spare parts list

No.	Item Number	Name	Quantity used	Delivery time
3	09 24 03 081 10 90	extension	1.00	2
8	90 90 03 157 00 90	top	1.00	2
2	36 310 882-28	connection	1.00	20
7	90 23 01 019 02-28	aerator	1.00	20
1	90 90 03 156 00 90	top	1.00	2
5	09 27 22 501-28	rosette	1.00	20
6	04 28 22 105 10-28	spout	1.00	20
4	90 14 10 026 00 90	seal	1.00	2