









TARA Wall-mounted basin mixer without pop-up waste - Brushed Champagne (22kt Gold)

TARA

36 717 882



- 240mm projection
- fixed spout
- circular, air-enriched flow
- hole diameter valve 40 mm
- hole diameter spout 40 mm
- rosette Ø 55 mm
- max. flow 4.5 l/min
- lead-free
- This product can help a building meet the requirements of Green Building Rating Systems, e.g. LEED®, BREEAM®, DGNB

	Brushed Champagne (22kt Gold)	36 717 882-46 0010
	Chrome	36 717 882-00 0010
	Brushed Platinum	36 717 882-06 0010
	Platinum	36 717 882-08 0010
	Dark Chrome	36 717 882-19 0010
	Brushed Durabronze (23kt Gold)	36 717 882-28 0010
	Matte Black	36 717 882-33 0010
	Brushed Bronze	36 717 882-42 0010
	Champagne (22kt Gold)	36 717 882-47 0010
	Brushed Chrome	36 717 882-93 0010
	Brushed Dark Platinum	36 717 882-99 0010

Required miscellaneous



Concealed wall-mounted mixer centred spout - 35 700 970-90 0010

- max. recess depth 145 mm
- min. recess depth 85 mm

Required miscellaneous



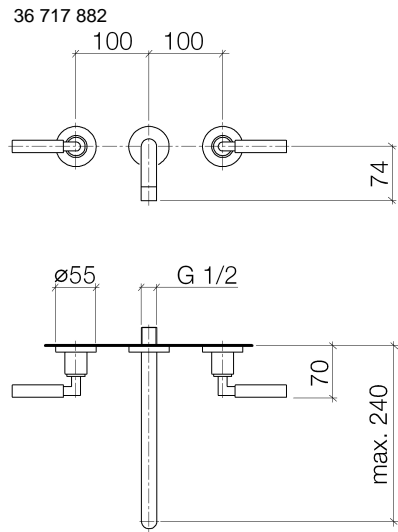
Concealed wall-mounted mixer variable positioning - 35 720 970-90 0010

- max. recess depth 145 mm
- min. recess depth 85 mm



TARA Wall-mounted basin mixer without pop-up waste - Brushed Champagne (22kt Gold)

TARA



Codes & Standards

ADA

California Energy
Commission
(CEC)

EPA WaterSense

NSF61

WaterSense



Certificates and sustainability

IAPMO_N-4976

IAPMO_8834

TARA Wall-mounted basin mixer without pop-up waste - Brushed Champagne (22kt Gold)

TARA

36 717 882

