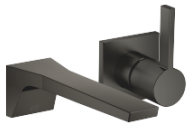








CL.1 Wall-mounted single-lever basin mixer without pop-up waste - Brushed Dark Platinum

36 860 705 Product version from 7/1/2023



- 198mm projection
- fixed spout
- rectangular spray pattern with 40 individual jets
- hole diameter spout 37 mm
- hole diameter single-lever mixer 57 mm
- rosette 80 x 80 mm
- max. flow 4.5 l/min
- lead-free
- This product can help a building meet the requirements of Green Building Rating Systems, e.g. LEED®, BREEAM®, DGNB

	Brushed Dark Platinum	36 860 705-99
	Chrome	36 860 705-00
	Brushed Platinum	36 860 705-06
	Dark Chrome	36 860 705-19
	Brushed Champagne (22kt Gold)	36 860 705-46
	Champagne (22kt Gold)	36 860 705-47

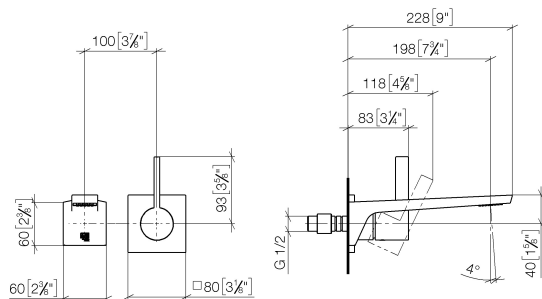
Required miscellaneous



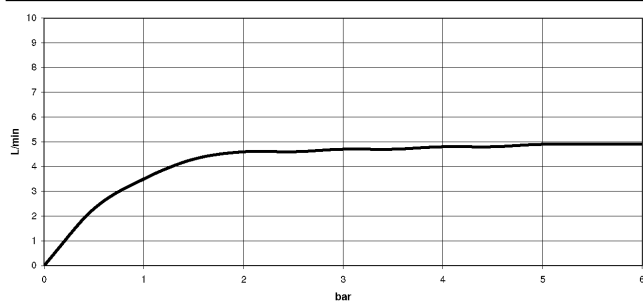
- Concealed wall-mounted single-lever mixer -** 35 860 970-90 0010
- max. recess depth mm
 - min. recess depth mm
 - Rough can be rotated to position the lever on top or to the left of the spout.

CL.1 Wall-mounted single-lever basin mixer without pop-up waste - Brushed Dark Platinum

36 860 705 Product version from 7/1/2023
mm [inches]



Flow rate chart



Codes & Standards

ADA	ASME A112.18.1	ASME A112.18.1/CSA B125.1	California Energy Commission (CEC)
cUPC	DIN 4109	EN 817	EPA WaterSense
ISO 3822	NSF/ANSI 372	NSF/ANSI/CAN 61	NSF372
NSF61	Ü-Zeichen	Water Sense	WaterSense





CL.1 Wall-mounted single-lever basin mixer without pop-up waste - Brushed
Dark Platinum

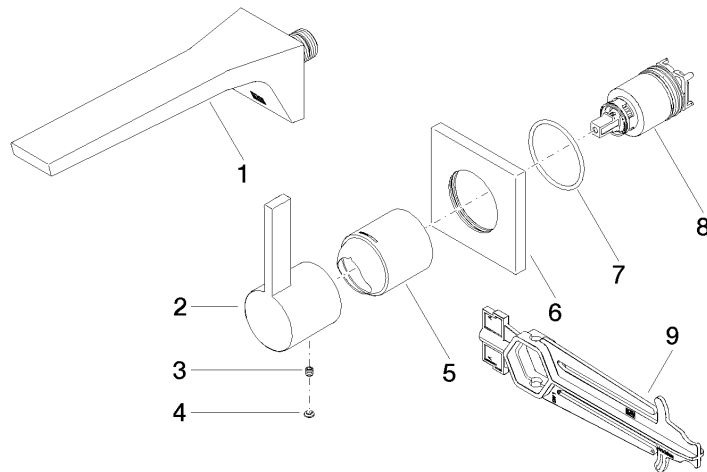
36 860 705 Product version from 7/1/2023

Certificates

IAPMO_N-4976	DVGW_DW-6512DN0	IAPMO_6397	LGA_29	IAPMO_8834
IAPMO_4976 (

CL.1 Wall-mounted single-lever basin mixer without pop-up waste - Brushed Dark Platinum

36 860 705 Product version from 7/1/2023



Spare parts list

No.	Item Number	Name	Quantity used	Delivery time
1	13 800 705-99	CL.1 Wall-mounted basin spout without pop-up waste - Brushed Dark Platinum	1	20
2	09 20 70 050-99	handle	1	20
3	90 31 11 030 00 90	pin	1	2
4	90 31 20 087 00-99	plug	1	20
5	09 11 02 288-99	cover	1	20
6	09 27 78 039-99	rosette	1	20
7	90 14 10 049 00 90	seal	1	2
8	90 15 05 064 01 90	cartridge	1	2
9	90 30 09 064 00 90	key	1	2