



LULU Wall-mounted single-lever basin mixer without pop-up waste - Chrome

LULU

36 860 710



- 200mm projection
- fixed spout
- circular, air-enriched flow
- hole diameter spout 37 mm
- hole diameter single-lever mixer 57 mm
- rosette 78 x 78 mm
- max. flow 4.5 l/min
- lead-free
- This product can help a building meet the requirements of Green Building Rating Systems, e.g. LEED®, BREEAM®, DGNB

	Chrome	36 860 710-00 0010
	Brushed Platinum	36 860 710-06 0010

Required miscellaneous



- Concealed wall-mounted single-lever mixer -**

35 860 970-90
0010
- max. recess depth 95 mm
 - min. recess depth 80 mm
 - Rough can be rotated to position the lever on top or to the left of the spout.

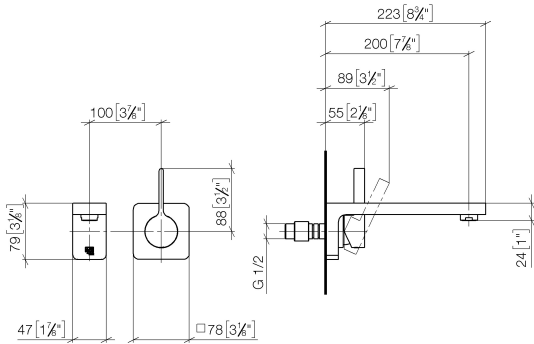


LULU Wall-mounted single-lever basin mixer without pop-up waste - Chrome

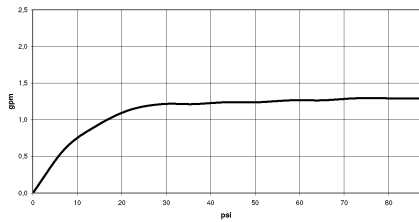
LULU

36 860 710


mm [inches]



Flow rate chart



Codes & Standards

ADA	ASME A112.18.1	ASME A112.18.1/CSA B125.1	California Energy Commission (CEC)
cUPC	EPA WaterSense	NSF/ANSI 372	NSF/ANSI/CAN 61
NSF372	NSF61	Water Sense	WaterSense 



LULU Wall-mounted single-lever basin mixer without pop-up waste - Chrome

LULU

36 860 710

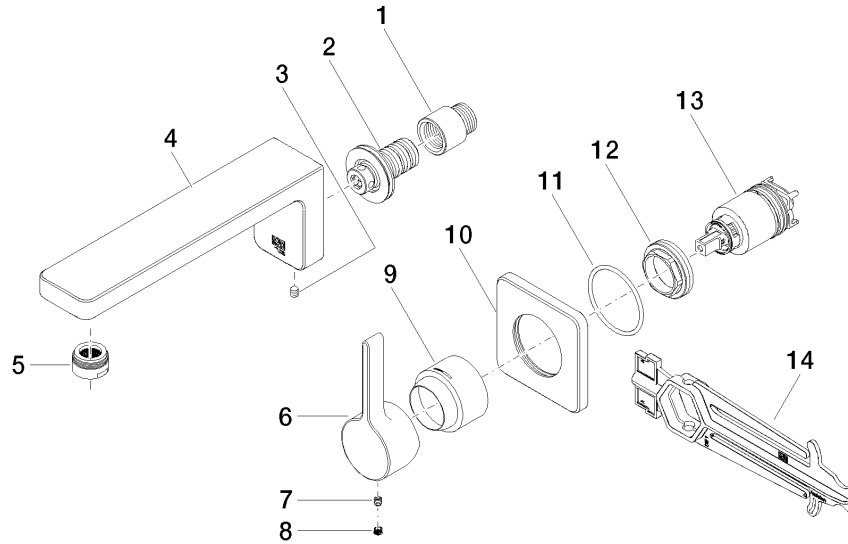
Certificates

IAPMO_4976

IAPMO_8834

IAPMO_6397

IAPMO_N-4976





LULU Wall-mounted single-lever basin mixer without pop-up waste - Chrome

LULU

36 860 710

Spare parts list

No.	Item Number	Name	Quantity used	Delivery time
	09 24 03 072 10 90	nipple	14	2