

VAIA Wall-mounted single-lever basin mixer without pop-up waste - Brushed Bronze

VAIA

36 860 809 Product version from 4/1/2025



- 190mm projection
- fixed spout
- circular, air-enriched flow
- hole diameter spout 37 mm
- hole diameter single-lever mixer 57 mm
- rosette for single-lever mixer Ø 78mm
- rosette for spout Ø 60mm
- max. flow 4.5 l/min
- lead-free
- This product can help a building meet the requirements of Green Building Rating Systems, e.g. LEED®, BREEAM®, DGNB

	Brushed Bronze	36 860 809-42 0010
	Chrome	36 860 809-00 0010
	Brushed Platinum	36 860 809-06 0010
	Platinum	36 860 809-08 0010
	Dark Chrome	36 860 809-19 0010
	Brushed Durabronze (23kt Gold)	36 860 809-28 0010
	Brushed Dark Brass	36 860 809-39 0010
	Brushed Champagne (22kt Gold)	36 860 809-46 0010
	Champagne (22kt Gold)	36 860 809-47 0010
	Brushed Dark Platinum	36 860 809-99 0010

Required miscellaneous



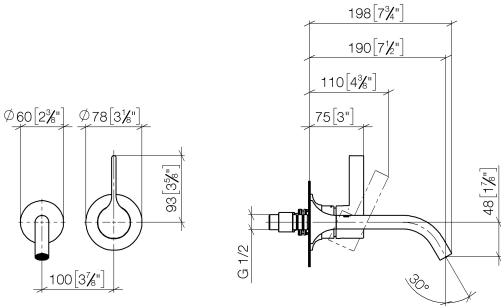
- Concealed wall-mounted single-lever mixer -** 35 860 970-90 0010
- min. recess depth 80 mm
 - Rough can be rotated to position the lever on top or to the left of the spout.
 - max. recess depth 95 mm



VAIA Wall-mounted single-lever basin mixer without pop-up waste - Brushed Bronze

VAIA

36 860 809 Product version from 4/1/2025
mm [inches]



Codes & Standards

ADA	ASME A112.18.1	California Energy Commission (CEC)	cUPC
EPA WaterSense	NSF372	NSF61	WaterSense



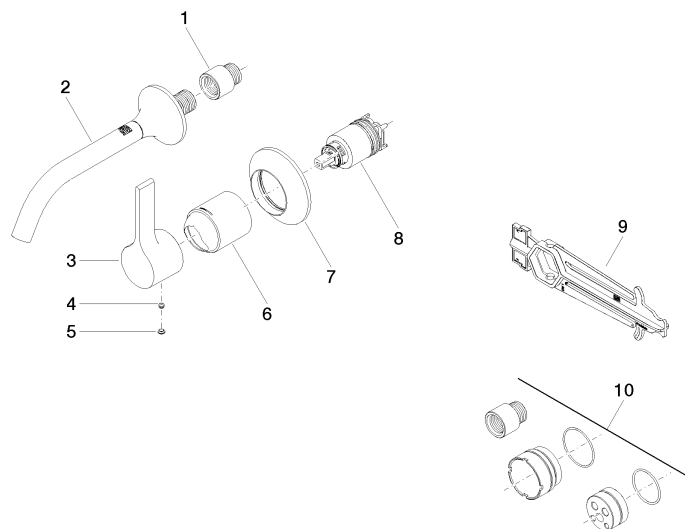
Certificates and sustainability

IAPMO_N-4976	IAPMO_6397	IAPMO_4976 (IAPMO_8834
--------------	------------	--------------	------------

VAIA Wall-mounted single-lever basin mixer without pop-up waste - Brushed Bronze

VAIA

36 860 809 Product version from 4/1/2025



Spare parts list

No.	Item Number	Name	Quantity used	Delivery time
	4 90 31 11 063 00 90	pin	1.00	2
	9 90 30 09 064 00 90	key	1.00	2
	6 09 11 02 288-42	cover	1.00	60
	2 13 800 809-42 0010	VAIA Wall-mounted basin spout without pop-up waste - Brushed Bronze	1.00	-
Spare part can no longer be ordered, please order the replacement item				
	5 90 31 20 087 00-42	plug	1.00	30
	8 90 15 05 064 01 90	cartridge	1.00	2
	7 90 27 80 012 00-42	rosette	1.00	30
	3 09 20 80 021-42	handle	1.00	60
	1 09 24 03 072 10 90	nipple	1.00	2
	10 12 869 970 90	Extension 20 mm -	1.00	2