

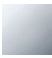

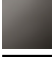
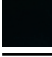


## LISSE Wall-mounted single-lever basin mixer without pop-up waste - Chrome

LISSE

36 860 845



- 170mm projection
- fixed spout
- circular, air-enriched flow
- hole diameter spout 37 mm
- hole diameter single-lever mixer 57 mm
- rosette 78 x 78 mm
- max. flow 5.7 l/min
- lead-free
- This product can help a building meet the requirements of Green Building Rating Systems, e.g. LEED®, BREEAM®, DGNB

|   |                       |               |
|---|-----------------------|---------------|
|  | Chrome                | 36 860 845-00 |
|  | Brushed Platinum      | 36 860 845-06 |
|  | Dark Chrome           | 36 860 845-19 |
|  | Matte Black           | 36 860 845-33 |
|  | Brushed Chrome        | 36 860 845-93 |
|  | Brushed Dark Platinum | 36 860 845-99 |

### Required miscellaneous

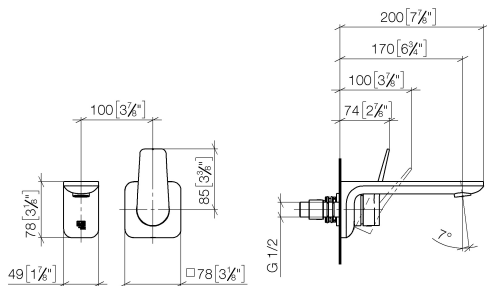


#### **Concealed wall-mounted single-lever mixer -** 35 860 970-90 0010

- max. recess depth 95 mm
- min. recess depth 80 mm
- Rough can be rotated to position the lever on top or to the left of the spout.

36 860 845

mm [inches]



### Flow rate chart



### Codes & Standards

ADA

ASME  
A112.18.1/CSA  
B125.1

NSF/ANSI 372

NSF/ANSI/CAN  
61

Water Sense





LISSÉ Wall-mounted single-lever basin mixer without pop-up waste - Chrome

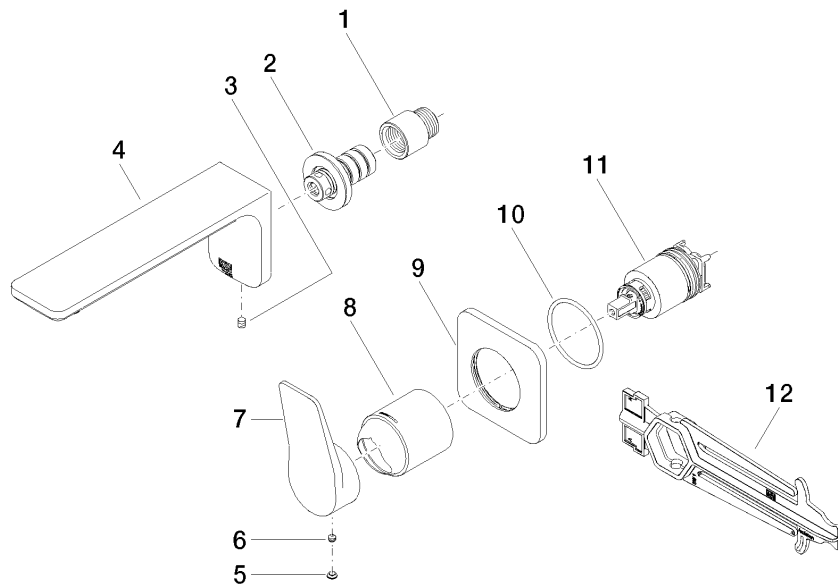
LISSÉ

36 860 845

Certificates

|                   |                     |                 |                 |                 |
|-------------------|---------------------|-----------------|-----------------|-----------------|
| IAPMO_N-4976 (2). | DVGW_DW-6512DN0435. | IAPMO_8834 (2). | IAPMO_6397 (2). | IAPMO_4976 (1). |
| LGA_29900.        | WRAS_2107018.       |                 |                 |                 |

36 860 845



## Spare parts list

| No. | Item Number        | Name       | Quantity used | Delivery time |
|-----|--------------------|------------|---------------|---------------|
| 1   | 09 24 03 072 10 90 | nipple     | 1             | 2             |
| 2   | 90 24 03 108 00 90 | nipple set | 1             | 2             |
| 3   | 90 31 11 004 00 90 | pin        | 1             | 2             |
| 4   | 90 11 84 021 00-00 | spout      | 1             | 10            |
| 5   | 90 31 20 087 00-00 | plug       | 1             | 10            |
| 6   | 90 31 11 063 00 90 | pin        | 1             | 2             |
| 7   | 09 20 84 021-00    | handle     | 1             | 10            |
| 8   | 09 11 02 288-00    | cover      | 1             | 10            |
| 9   | 90 27 84 020 00-00 | rosette    | 1             | 10            |
| 10  | 90 14 10 049 00 90 | seal       | 1             | 2             |
| 11  | 90 15 05 064 01 90 | cartridge  | 1             | 2             |
| 12  | 90 30 09 064 00 90 | key        | 1             | 2             |