

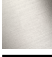






**LISSE Wall-mounted single-lever basin mixer without pop-up waste - Matte Black**

36 860 845 Product version from 4/1/2024



- 170mm projection
- fixed spout
- circular, air-enriched flow
- hole diameter spout 37 mm
- hole diameter single-lever mixer 57 mm
- rosette 78 x 78 mm
- max. flow 5.7 l/min
- lead-free
- This product can help a building meet the requirements of Green Building Rating Systems, e.g. LEED®, BREEAM®, DGNB
- WRAS

	Matte Black	36 860 845-33
	Chrome	36 860 845-00
	Brushed Platinum	36 860 845-06
	Dark Chrome	36 860 845-19
	Brushed Light Gold	36 860 845-27
	Brushed Chrome	36 860 845-93
	Brushed Dark Platinum	36 860 845-99

**Required miscellaneous**



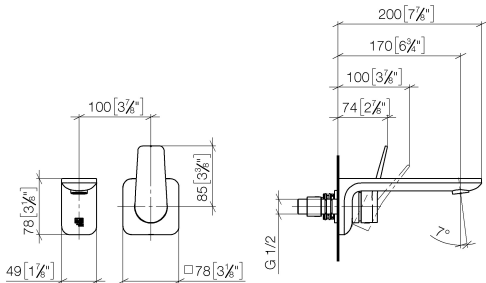
**Concealed wall-mounted single-lever mixer -** 35 860 970-90 0010

- min. recess depth mm
- Rough can be rotated to position the lever on top or to the left of the spout.
- max. recess depth mm

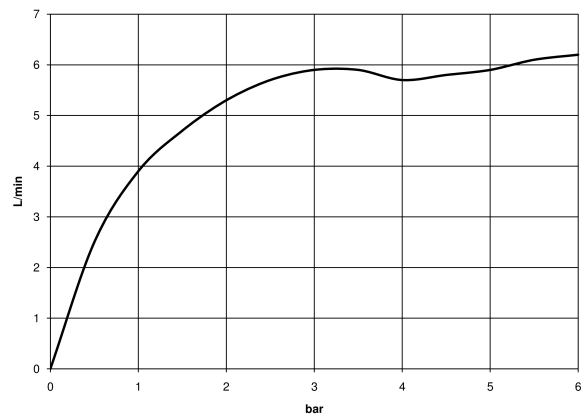


# LISSE Wall-mounted single-lever basin mixer without pop-up waste - Matte Black

36 860 845 Product version from 4/1/2024  
mm [inches]



Flow rate chart



## Codes & Standards

ADA	ASME A112.18.1/CSA B125.1	EN 817	EPA WaterSense
NSF/ANSI 372	NSF/ANSI/CAN 61	NSF372	NSF61
Scottish Water Byelaws	UK Water Supply Regulations	Water Sense	WaterSense





LISSE Wall-mounted single-lever basin mixer without pop-up waste - Matte Black

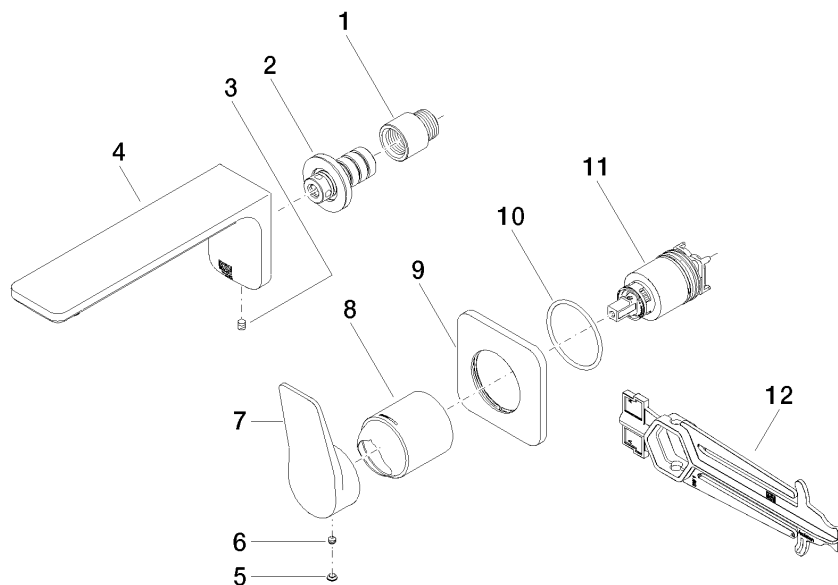
36 860 845 Product version from 4/1/2024

Certificates

IAPMO_N-4976	DVGW_DW-6512DN0	IAPMO_6397	WRAS_2107	IAPMO_8834
--------------	-----------------	------------	-----------	------------

## LISSE Wall-mounted single-lever basin mixer without pop-up waste - Matte Black

36 860 845 Product version from 4/1/2024



### Spare parts list

No.	Item Number	Name	Quantity used	Delivery time
1	09 24 03 072 10 90	nipple	1	2
2	90 24 03 108 00 90	nipple set	1	2
3	90 31 11 004 00 90	pin	1	2
4	90 11 84 021 00-33	spout	1	30
5	90 31 20 087 00-33	plug	1	30
6	90 31 11 063 00 90	pin	1	2
7	09 20 84 021-33	handle	1	30
8	09 11 02 288-33	cover	1	30
9	90 27 84 020 00-33	rosette	1	30
10	90 14 10 049 00 90	seal	1	2
11	90 15 05 046 02 90	cartridge	1	2
12	90 30 09 064 00 90	key	1	2