







LISSÉ Wall-mounted single-lever basin mixer without pop-up waste - Brushed Chrome

LISSÉ

36 860 845



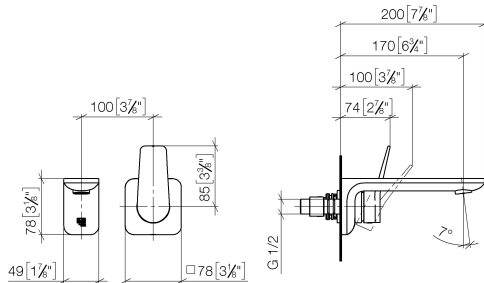
- 170mm projection
- fixed spout
- circular, air-enriched flow
- hole diameter spout 37 mm
- hole diameter single-lever mixer 57 mm
- rosette 78 x 78 mm
- max. flow 5.7 l/min
- lead-free
- This product can help a building meet the requirements of Green Building Rating Systems, e.g. LEED®, BREEAM®, DGNB
- WRAS 2107018

	Brushed Chrome	36 860 845-93
	Chrome	36 860 845-00
	Brushed Platinum	36 860 845-06
	Dark Chrome	36 860 845-19
	Matte Black	36 860 845-33
	Brushed Dark Platinum	36 860 845-99

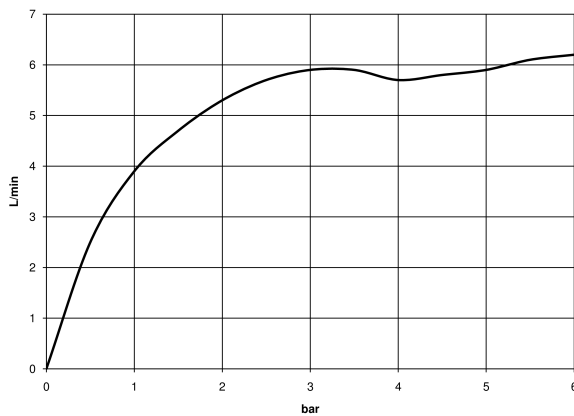
LISSÉ Wall-mounted single-lever basin mixer without pop-up waste - Brushed Chrome

LISSÉ


36 860 845
mm [inches]



Flow rate chart



Codes & Standards

ADA	ASME A112.18.1	ASME A112.18.1/CSA B125.1	cUPC
DIN 4109	EN 817	EPA WaterSense	ISO 3822
NSF/ANSI 372	NSF/ANSI/CAN 61	NSF372	NSF61
Scottish Water Byelaws	UK Water Supply Regulations	Ü-Zeichen	Water Sense
WaterSense			



LISSE Wall-mounted single-lever basin mixer without pop-up waste - Brushed Chrome

LISSE

36 860 845

Certificates

IAPMO_4976	WRAS_2107	IAPMO_8834	IAPMO_6397	IAPMO_N-4976
DVGW_DW-6512DN0	LGA_29			

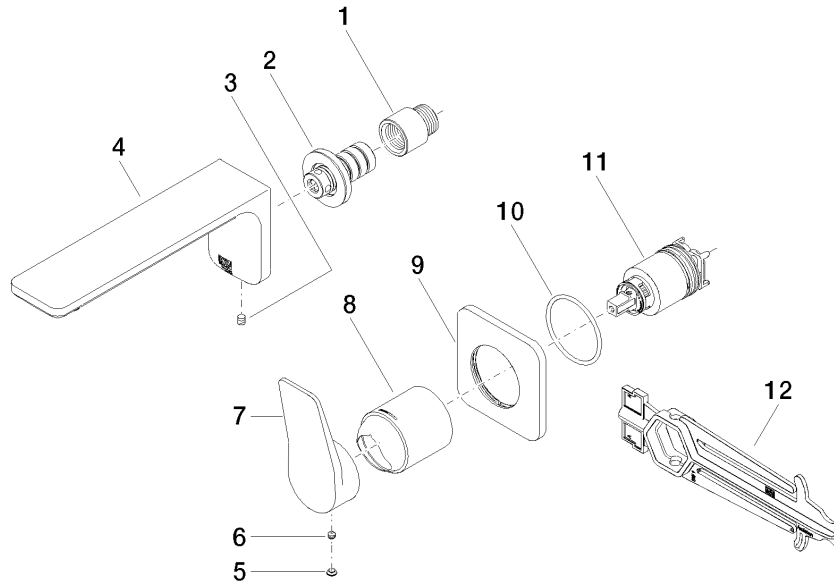
LISSÉ Wall-mounted single-lever basin mixer without pop-up waste - Brushed Chrome

LISSÉ

36 860 845

Product version from 4/1/2024

Parts for other
finishes can be found
here: [Chrome](#)





LISSE Wall-mounted single-lever basin mixer without pop-up waste - Brushed Chrome

LISSE

36 860 845

Spare parts list

Product version from 4/1/2024

No.	Item Number	Name	Quantity used	Delivery time
	09 24 03 072 10 90	nipple	12	2