
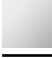







**LISSÉ Wall-mounted single-lever basin mixer without pop-up waste - Brushed Dark Platinum**

36 860 845    Product version from 4/1/2024



- 170mm projection
- fixed spout
- circular, air-enriched flow
- hole diameter spout 37 mm
- hole diameter single-lever mixer 57 mm
- rosette 78 x 78 mm
- max. flow 5.7 l/min
- lead-free
- This product can help a building meet the requirements of Green Building Rating Systems, e.g. LEED®, BREEAM®, DGNB
- WRAS

	Brushed Dark Platinum	36 860 845-99
	Chrome	36 860 845-00
	Brushed Platinum	36 860 845-06
	Dark Chrome	36 860 845-19
	Brushed Light Gold	36 860 845-27
	Matte Black	36 860 845-33
	Brushed Chrome	36 860 845-93

**Required miscellaneous**

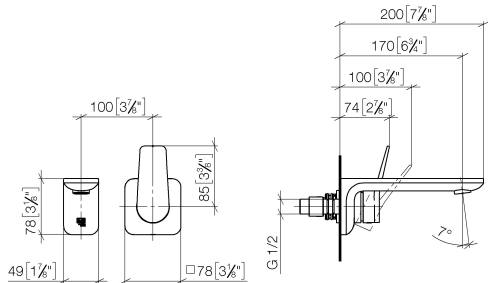


- |  |                       |
|--|-----------------------|
| <b>Concealed wall-mounted single-lever mixer -</b>   | 35 860 970-90<br>0010 |
| <ul style="list-style-type: none"> <li>• min. recess depth mm</li> <li>• Rough can be rotated to position the lever on top or to the left of the spout.</li> <li>• max. recess depth mm</li> </ul> |                       |

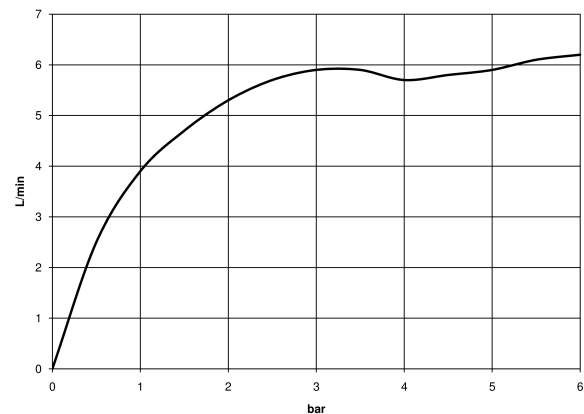


LISSE Wall-mounted single-lever basin mixer without pop-up waste - Brushed Dark Platinum

36 860 845 Product version from 4/1/2024  
mm [inches]



Flow rate chart



Codes & Standards

ADA	ASME A112.18.1/CSA B125.1	EN 817	EPA WaterSense
NSF/ANSI 372	NSF/ANSI/CAN 61	NSF372	NSF61
Scottish Water Byelaws	UK Water Supply Regulations	Water Sense	WaterSense





LISSE Wall-mounted single-lever basin mixer without pop-up waste - Brushed Dark Platinum

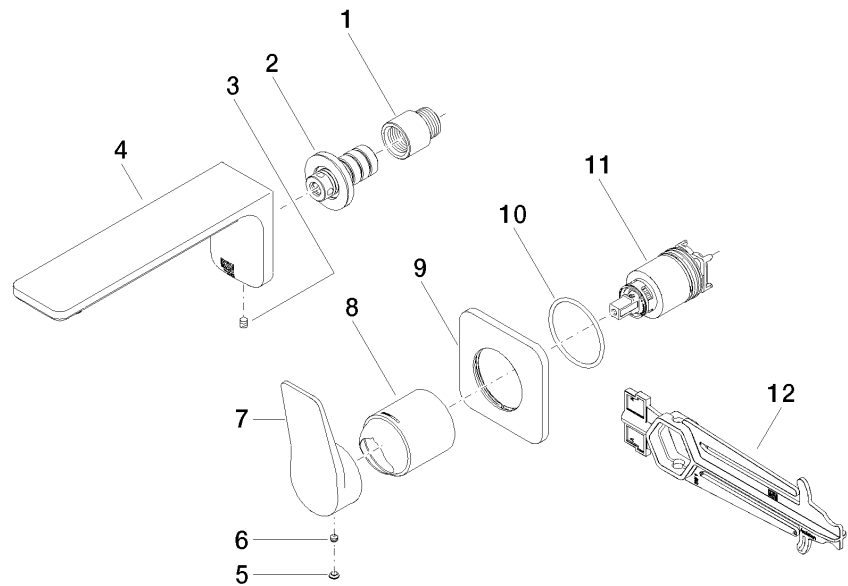
36 860 845 Product version from 4/1/2024

Certificates

IAPMO_N-4976	DVGW_DW-6512DN0	IAPMO_6397	WRAS_2107	IAPMO_8834
--------------	-----------------	------------	-----------	------------

**LISSÉ Wall-mounted single-lever basin mixer without pop-up waste - Brushed Dark Platinum**

36 860 845 Product version from 4/1/2024



**Spare parts list**

No.	Item Number	Name	Quantity used	Delivery time
1	09 24 03 072 10 90	nipple	1	2
2	90 24 03 108 00 90	nipple set	1	2
3	90 31 11 004 00 90	pin	1	2
4	90 11 84 021 00-99	spout	1	20
5	90 31 20 087 00-99	plug	1	20
6	90 31 11 063 00 90	pin	1	2
7	09 20 84 021-99	handle	1	20
8	09 11 02 288-99	cover	1	20
9	90 27 84 020 00-99	rosette	1	20
10	90 14 10 049 00 90	seal	1	2
11	90 15 05 046 02 90	cartridge	1	2
12	90 30 09 064 00 90	key	1	2