

META META PURE Wall-mounted single-lever basin mixer without pop-up waste - Brushed Dark Platinum

META

36 861 664 Product version from 7/1/2023



- 250mm projection
- fixed spout
- circular, air-enriched flow
- hole diameter spout 37 mm
- hole diameter single-lever mixer 57 mm
- rosette for spout Ø 55mm
- rosette for mixer Ø 78mm
- max. flow 4.5 l/min
- lead-free
- This product can help a building meet the requirements of Green Building Rating Systems, e.g. LEED®, BREEAM®, DGNB

	Brushed Dark Platinum	36 861 664-99 0010
	Chrome	36 861 664-00 0010
	Brushed Platinum	36 861 664-06 0010
	Dark Chrome	36 861 664-19 0010
	Light Gold	36 861 664-26 0010
	Brushed Light Gold	36 861 664-27 0010
	Matte Black	36 861 664-33 0010
	Brushed Bronze	36 861 664-42 0010
	Brushed Champagne (22kt Gold)	36 861 664-46 0010
	Champagne (22kt Gold)	36 861 664-47 0010
	Brushed Chrome	36 861 664-93 0010

Required miscellaneous



Concealed wall-mounted single-lever mixer - 35 860 970-90 0010

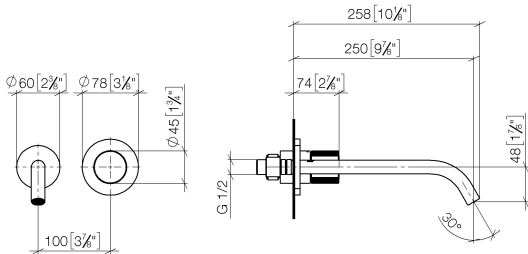
- min. recess depth 80 mm
- Rough can be rotated to position the lever on top or to the left of the spout.
- max. recess depth 95 mm




META META PURE Wall-mounted single-lever basin mixer without pop-up waste - Brushed Dark Platinum

META

36 861 664 Product version from 7/1/2023
mm [inches]

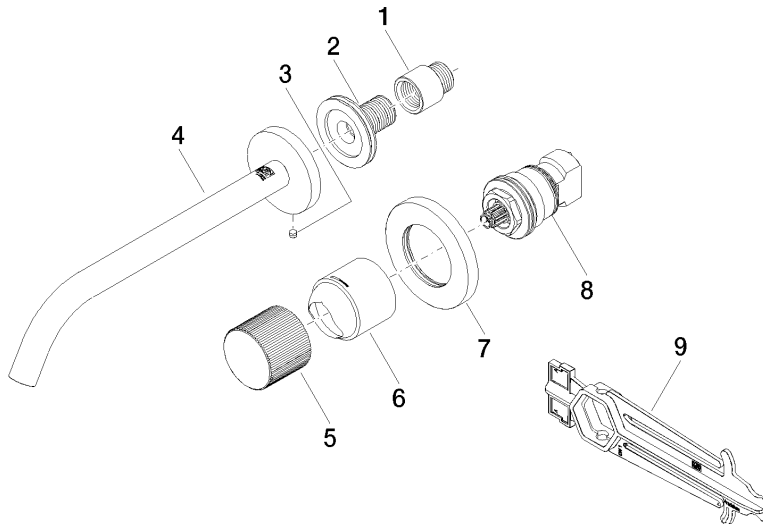


Codes & Standards

California Energy Commission (CEC)	EPA WaterSense	NSF372	NSF61
WaterSense			

Certificates and sustainability

IAPMO_N-4976	IAPMO_6397	IAPMO_8834
--------------	------------	------------



Spare parts list

No.	Item Number	Name	Quantity used	Delivery time
8	90 90 03 169 02 90	top	1.00	2
7	90 27 62 011 00-99	rosette	1.00	20
2	90 24 03 280 00 90	nipple	1.00	2
9	90 30 09 064 00 90	key	1.00	2
3	09 31 11 112 90	pin	1.00	60
1	09 24 03 072 10 90	nipple	1.00	2
6	09 11 02 389-99	cover	1.00	20
4	90 28 22 324 01-99	spout	1.00	20
5	09 20 66 010-99	handle	1.00	20