

## META Wall-mounted single-lever basin mixer with individual rosettes - Chrome

META

36 862 660 Product version from 7/1/2023



- 90° spout
- 190mm projection
- fixed spout
- circular, air-enriched flow
- hole diameter spout 37 mm
- hole diameter single-lever mixer 57 mm
- rosette for spout Ø 55mm
- rosette for mixer Ø 78mm
- max. flow 4.5 l/min
- lead-free
- This product can help a building meet the requirements of Green Building Rating Systems, e.g. LEED®, BREEAM®, DGNB

|  |                               |                    |
|--|-------------------------------|--------------------|
|  | Chrome                        | 36 862 660-00 0010 |
|  | Brushed Platinum              | 36 862 660-06 0010 |
|  | Dark Chrome                   | 36 862 660-19 0010 |
|  | Light Gold                    | 36 862 660-26 0010 |
|  | Brushed Light Gold            | 36 862 660-27 0010 |
|  | Matte Black                   | 36 862 660-33 0010 |
|  | Brushed Bronze                | 36 862 660-42 0010 |
|  | Brushed Champagne (22kt Gold) | 36 862 660-46 0010 |
|  | Champagne (22kt Gold)         | 36 862 660-47 0010 |
|  | Brushed Chrome                | 36 862 660-93 0010 |
|  | Brushed Dark Platinum         | 36 862 660-99 0010 |

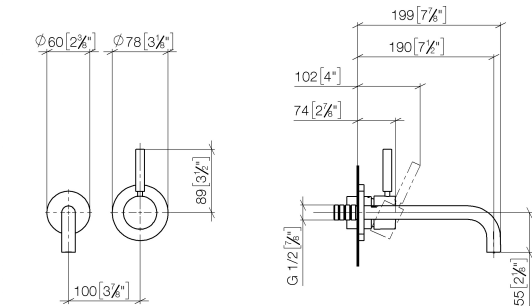
### Required miscellaneous



#### **Concealed wall-mounted single-lever mixer -** 35 860 970-90 0010

- max. recess depth 95 mm
- min. recess depth 80 mm
- Rough can be rotated to position the lever on top or to the left of the spout.

mm [inches]



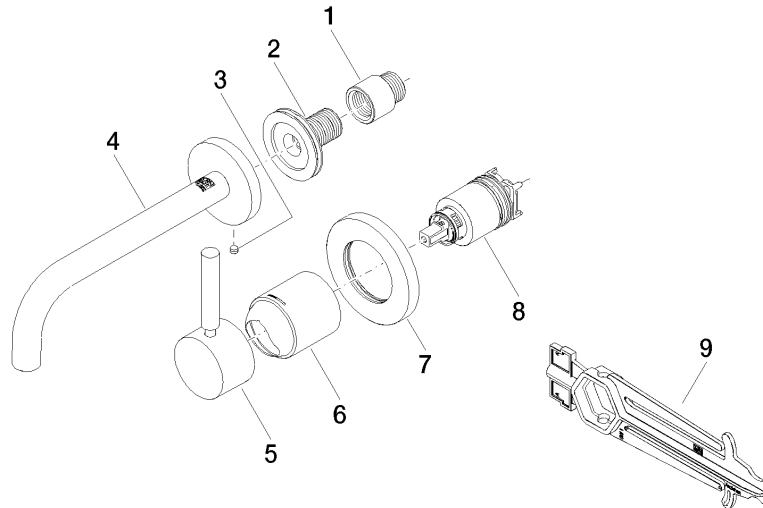
### Codes & Standards

|                |                |                                    |            |
|----------------|----------------|------------------------------------|------------|
| ADA            | ASME A112.18.1 | California Energy Commission (CEC) | cUPC       |
| EPA WaterSense | NSF372         | NSF61                              | WaterSense |



### Certificates and sustainability

|              |            |              |            |
|--------------|------------|--------------|------------|
| IAPMO_N-4976 | IAPMO_6397 | IAPMO_4976 ( | IAPMO_8834 |
|--------------|------------|--------------|------------|



## Spare parts list

| No. | Item Number        | Name      | Quantity used | Delivery time |
|-----|--------------------|-----------|---------------|---------------|
| 2   | 90 24 03 280 00 90 | nipple    | 1.00          | 2             |
| 4   | 90 28 22 351 01-00 | spout     | 1.00          | 10            |
| 7   | 90 27 62 011 00-00 | rosette   | 1.00          | 10            |
| 6   | 09 11 02 288-00    | cover     | 1.00          | 10            |
| 3   | 09 31 11 112 90    | pin       | 1.00          | 60            |
| 8   | 90 15 05 064 01 90 | cartridge | 1.00          | 2             |
| 5   | 90 20 66 007 00-00 | handle    | 1.00          | 10            |
| 1   | 09 24 03 072 10 90 | nipple    | 1.00          | 2             |
| 9   | 90 30 09 064 00 90 | key       | 1.00          | 2             |