

MEM Wall-mounted single-lever basin mixer with cover plate without pop-up waste - Platinum

36 864 782



- 207mm projection
- fixed spout
- rectangular, air-enriched flow
- hole diameter spout 37 mm
- hole diameter single-lever mixer 57 mm
- cover plate 80 x 180 mm
- max. flow 4.5 l/min
- lead-free
- This product can help a building meet the requirements of Green Building Rating Systems, e.g. LEED®, BREEAM®, DGNB

| | | |
|--|--------------------------------|--------------------|
| | Platinum | 36 864 782-08 0010 |
| | Chrome | 36 864 782-00 0010 |
| | Brushed Platinum | 36 864 782-06 0010 |
| | Dark Chrome | 36 864 782-19 0010 |
| | Brushed Durabronze (23kt Gold) | 36 864 782-28 0010 |
| | Brushed Champagne (22kt Gold) | 36 864 782-46 0010 |
| | Champagne (22kt Gold) | 36 864 782-47 0010 |
| | Brushed Dark Platinum | 36 864 782-99 0010 |

Required miscellaneous



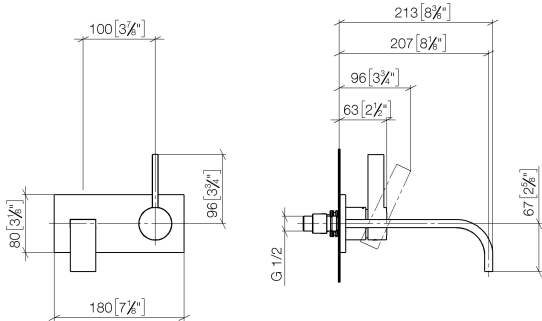
Concealed wall-mounted single-lever mixer - 35 860 970-90 0010

- max. recess depth mm
- min. recess depth mm
- Rough can be rotated to position the lever on top or to the left of the spout.

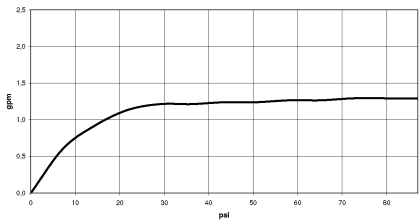


MEM Wall-mounted single-lever basin mixer with cover plate without pop-up waste - Platinum

36 864 782
mm [inches]



Flow rate chart



Codes & Standards

| | | | |
|--------|----------------|---------------------------|------------------------------------|
| ADA | ASME A112.18.1 | ASME A112.18.1/CSA B125.1 | California Energy Commission (CEC) |
| cUPC | EPA WaterSense | NSF/ANSI 372 | NSF/ANSI/CAN 61 |
| NSF372 | NSF61 | Water Sense | WaterSense |





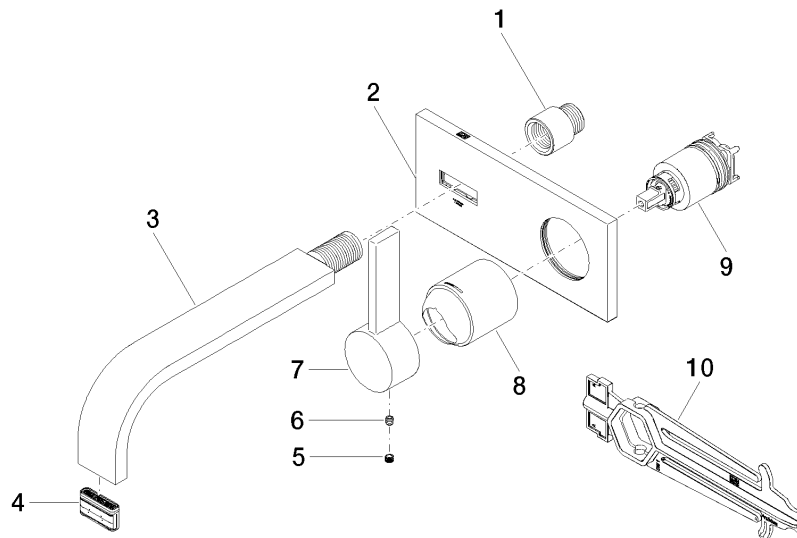
MEM Wall-mounted single-lever basin mixer with cover plate without pop-up waste - Platinum

36 864 782
Certificates

| | | | |
|--------------|------------|------------|--------------|
| IAPMO_N-4976 | IAPMO_6397 | IAPMO_8834 | IAPMO_4976 (|
|--------------|------------|------------|--------------|

MEM Wall-mounted single-lever basin mixer with cover plate without pop-up waste - Platinum

36 864 782



Spare parts list

| No. | Item Number | Name | Quantity used | Delivery time |
|-----|--------------------|-----------|---------------|---------------|
| 1 | 09 24 03 072 10 90 | nipple | 1 | 2 |
| 2 | 90 11 01 170 00-08 | plate | 1 | 40 |
| 3 | 04 28 22 149 10-08 | spout | 1 | 40 |
| 4 | 90 29 03 118 00 90 | aerator | 1 | 2 |
| 5 | 90 31 20 109 00 90 | plug | 1 | 2 |
| 6 | 90 31 11 030 00 90 | pin | 1 | 2 |
| 7 | 09 20 78 058-08 | handle | 1 | 40 |
| 8 | 09 11 02 288-08 | cover | 1 | 40 |
| 9 | 90 15 05 064 01 90 | cartridge | 1 | 2 |
| 10 | 90 30 09 064 00 90 | key | 1 | 2 |