

**MEM Wall-mounted single-lever basin mixer with cover plate without pop-up waste - Dark Chrome**

36 864 782



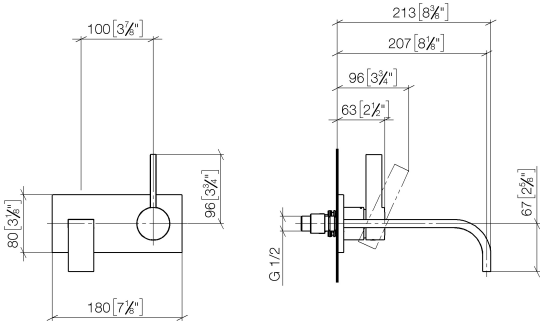
- 207mm projection
- fixed spout
- rectangular, air-enriched flow
- hole diameter spout 37 mm
- hole diameter single-lever mixer 57 mm
- cover plate 80 x 180 mm
- max. flow 4.5 l/min
- lead-free
- This product can help a building meet the requirements of Green Building Rating Systems, e.g. LEED®, BREEAM®, DGNB

	Dark Chrome	36 864 782-19 0010
	Chrome	36 864 782-00 0010
	Brushed Platinum	36 864 782-06 0010
	Platinum	36 864 782-08 0010
	Brushed Durabronze (23kt Gold)	36 864 782-28 0010
	Brushed Champagne (22kt Gold)	36 864 782-46 0010
	Champagne (22kt Gold)	36 864 782-47 0010
	Brushed Dark Platinum	36 864 782-99 0010

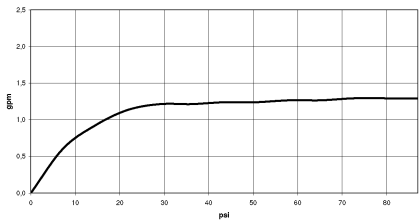


# MEM Wall-mounted single-lever basin mixer with cover plate without pop-up waste - Dark Chrome

36 864 782  
mm [inches]



## Flow rate chart



## Codes & Standards

ADA	ASME A112.18.1	ASME A112.18.1/CSA B125.1	California Energy Commission (CEC)
cUPC	NSF/ANSI 372	NSF/ANSI/CAN 61	NSF372
NSF61			



MEM Wall-mounted single-lever basin mixer with cover plate without pop-up waste - Dark Chrome

---

36 864 782  
Certificates

---

IAPMO\_N-4976      IAPMO\_6397      IAPMO\_4976 (

## MEM Wall-mounted single-lever basin mixer with cover plate without pop-up waste - Dark Chrome

36 864 782

Parts for other  
finishes can be found  
here: [Chrome](#)

