

Pressure balanced valve without diverter



SERIES SPECIFIC

36 900 660

Product version from 5/1/2024

- cover plate Ø 150 mm



| | | |
|---|--------------------------------|---------------|
|  | Brushed Platinum | 36 900 660-06 |
|  | Chrome | 36 900 660-00 |
|  | Platinum | 36 900 660-08 |
|  | Dark Chrome | 36 900 660-19 |
|  | Light Gold | 36 900 660-26 |
|  | Brushed Light Gold | 36 900 660-27 |
|  | Brushed Durabronze (23kt Gold) | 36 900 660-28 |
|  | Matte Black | 36 900 660-33 |
|  | Brushed Dark Brass | 36 900 660-39 |
|  | Brushed Bronze | 36 900 660-42 |
|  | Brushed Champagne (22kt Gold) | 36 900 660-46 |
|  | Champagne (22kt Gold) | 36 900 660-47 |
|  | Brushed Chrome | 36 900 660-93 |
|  | Brushed Dark Platinum | 36 900 660-99 |

Required miscellaneous



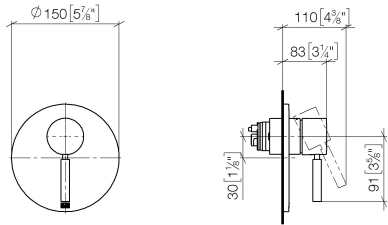
- Pressure balanced valve -

•min. recess depth 80 mm

•max. recess depth 105 mm

35 920 970 90

mm [inches]



Flow rate chart



Codes & Standards

ASME A112.18.1

cUPC



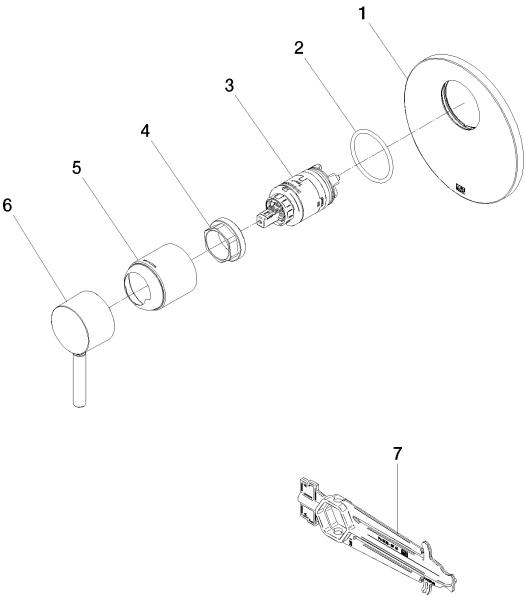
Pressure balanced valve without diverter

SERIES SPECIFIC

36 900 660 Product version from 5/1/2024

Certificates and sustainability

IAPMO_4976 (



Spare parts list

| No. | Item Number | Name | Quantity used | Delivery time |
|-----|--------------------|-----------|---------------|---------------|
| 1 | 09 11 02 262-06 | plate | 1.00 | 10 |
| 2 | 09 14 10 084 90 | seal | 1.00 | 2 |
| 7 | 90 30 09 064 00 90 | key | 1.00 | 2 |
| 6 | 90 20 66 004 00-06 | handle | 1.00 | 10 |
| 3 | 90 15 05 069 00 90 | cartridge | 1.00 | 2 |
| 5 | 09 11 02 260-06 | sleeve | 1.00 | 10 |
| 4 | 09 24 04 448 90 | nut | 1.00 | 2 |