

Pressure balanced valve without diverter

SERIES SPECIFIC

36 900 660

Product version from 5/1/2024

- cover plate Ø 150 mm



	Dark Chrome	36 900 660-19
	Chrome	36 900 660-00
	Brushed Platinum	36 900 660-06
	Platinum	36 900 660-08
	Light Gold	36 900 660-26
	Brushed Light Gold	36 900 660-27
	Brushed Durabrass (23kt Gold)	36 900 660-28
	Matte Black	36 900 660-33
	Brushed Dark Brass	36 900 660-39
	Brushed Bronze	36 900 660-42
	Brushed Champagne (22kt Gold)	36 900 660-46
	Champagne (22kt Gold)	36 900 660-47
	Brushed Chrome	36 900 660-93
	Brushed Dark Platinum	36 900 660-99

Required miscellaneous



- Pressure balanced valve -

•min. recess depth 80 mm

•max. recess depth 105 mm

35 920 970 90

36 900 660 Product version from 5/1/2024

mm [inches]



Flow rate chart



Codes & Standards

ASME A112.18.1 cUPC



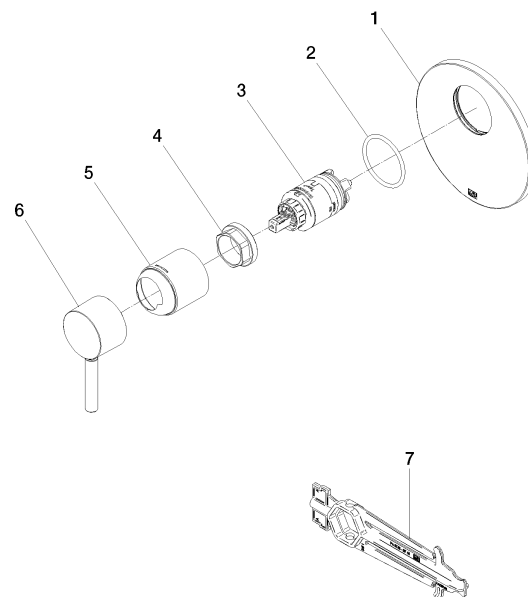
Pressure balanced valve without diverter

SERIES SPECIFIC

36 900 660 Product version from 5/1/2024

Certificates and sustainability

IAPMO_4976 (



Spare parts list

No.	Item Number	Name	Quantity used	Delivery time
1	09 11 02 262-19	plate	1.00	20
6	90 20 66 004 00-19	handle	1.00	20
2	09 14 10 084 90	seal	1.00	2
7	90 30 09 064 00 90	key	1.00	2
5	09 11 02 260-19	sleeve	1.00	20
4	09 24 04 448 90	nut	1.00	2
3	90 15 05 069 00 90	cartridge	1.00	2