



Pressure balanced valve without diverter

SERIES SPECIFIC

36 900 670 Product version from 5/1/2024



• cover plate 90 x 150 mm

| | | |
|---|-------------------------------------|---------------|
|  | Matte Black | 36 900 670-33 |
|  | Chrome | 36 900 670-00 |
|  | Brushed Platinum | 36 900 670-06 |
|  | Platinum | 36 900 670-08 |
|  | Dark Chrome | 36 900 670-19 |
|  | Brushed Light Gold | 36 900 670-27 |
|  | Brushed Durabrass (23kt Gold) | 36 900 670-28 |
|  | Brushed Dark Brass | 36 900 670-39 |
|  | Brushed Champagne (22kt Gold) | 36 900 670-46 |
|  | Champagne (22kt Gold) | 36 900 670-47 |
|  | Brushed Chrome | 36 900 670-93 |
|  | Brushed Dark Platinum | 36 900 670-99 |

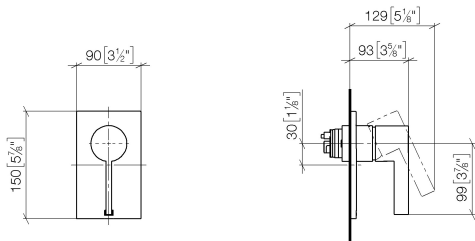
Required miscellaneous



Pressure balanced valve - 35 920 970 90
•min. recess depth 80 mm
•max. recess depth 105 mm

36 900 670 Product version from 5/1/2024

mm [inches]



Flow rate chart



Codes & Standards

ASME A112.18.1 cUPC



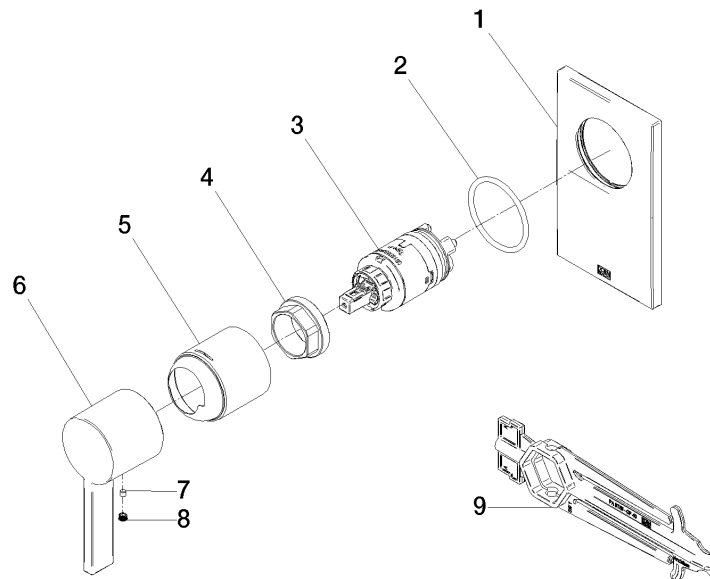
Pressure balanced valve without diverter

SERIES SPECIFIC

36 900 670 Product version from 5/1/2024

Certificates and sustainability

IAPMO_4976 (



Spare parts list

| No. | Item Number | Name | Quantity used | Delivery time |
|-----|--------------------|-----------|---------------|---------------|
| 5 | 09 11 02 260-33 | sleeve | 1.00 | 30 |
| 8 | 90 31 20 109 00 90 | plug | 1.00 | 2 |
| 4 | 09 24 04 448 90 | nut | 1.00 | 2 |
| 6 | 09 20 67 007-33 | handle | 1.00 | 60 |
| 9 | 90 30 09 064 00 90 | key | 1.00 | 2 |
| 7 | 09 31 11 099 90 | pin | 1.00 | 2 |
| 2 | 09 14 10 084 90 | seal | 1.00 | 2 |
| 3 | 90 15 05 069 00 90 | cartridge | 1.00 | 2 |
| 1 | 09 11 02 257-33 | plate | 1.00 | 60 |