

Pressure balanced valve without diverter

VAIA

36 900 809
Product version from 5/1/2023

• cover plate Ø 150 mm



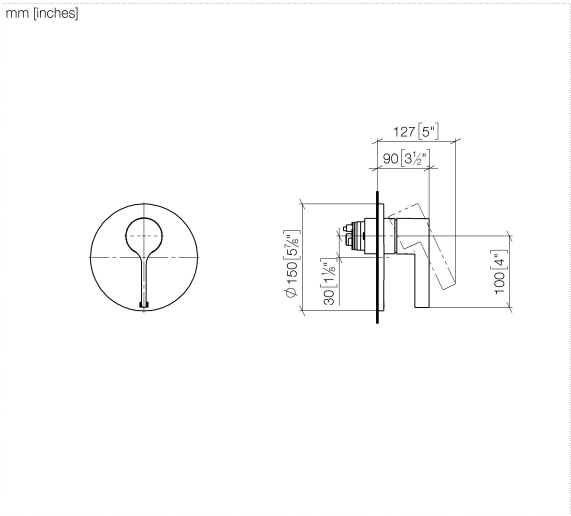
	Chrome	36 900 809-00
	Brushed Platinum	36 900 809-06
	Platinum	36 900 809-08
	Dark Chrome	36 900 809-19
	Brushed Light Gold	36 900 809-27
	Brushed Durabrass (23kt Gold)	36 900 809-28
	Brushed Dark Brass	36 900 809-39
	Brushed Bronze	36 900 809-42
	Brushed Champagne (22kt Gold)	36 900 809-46
	Champagne (22kt Gold)	36 900 809-47
	Brushed Dark Platinum	36 900 809-99

Required miscellaneous



**Pressure balanced valve -**
35 920 970 90

•min. recess depth 80 mm  
•max. recess depth 105 mm



Flow rate chart



Codes & Standards

ASME A112.18.1      cUPC



## Pressure balanced valve without diverter

---

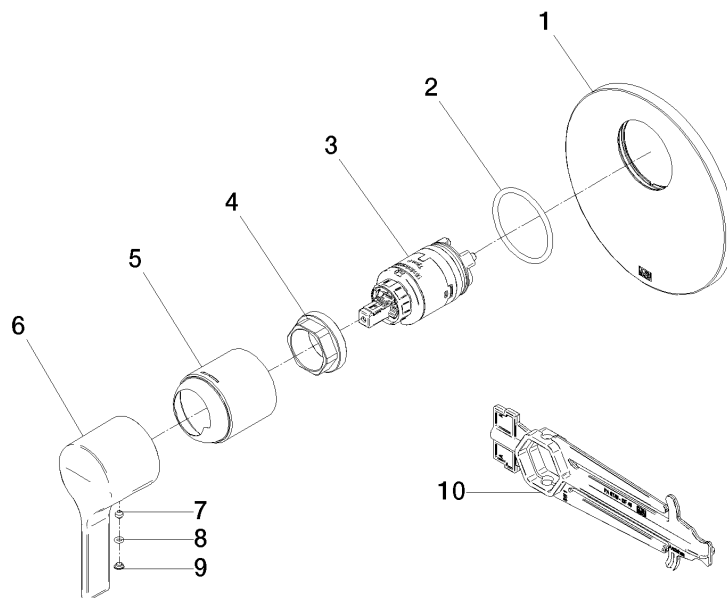
VAIA

36 900 809 Product version from 5/1/2023

### Certificates and sustainability

---

IAPMO\_4976 (



## Spare parts list

No.	Item Number	Name	Quantity used	Delivery time
1	09 11 02 262-00	plate	1.00	10
8	09 14 10 133 90	seal	1.00	2
2	09 14 10 084 90	seal	1.00	2
6	09 20 80 023-00	handle	1.00	10
7	90 31 11 063 00 90	pin	1.00	2
3	90 15 05 069 00 90	cartridge	1.00	2
5	09 11 02 260-00	sleeve	1.00	10
9	09 31 20 087-00	plug	1.00	10
4	09 24 04 448 90	nut	1.00	2
10	90 30 09 064 00 90	key	1.00	2