

Pressure balanced valve without diverter

VAIA

36 900 809
Product version from 5/1/2023

- cover plate Ø 150 mm



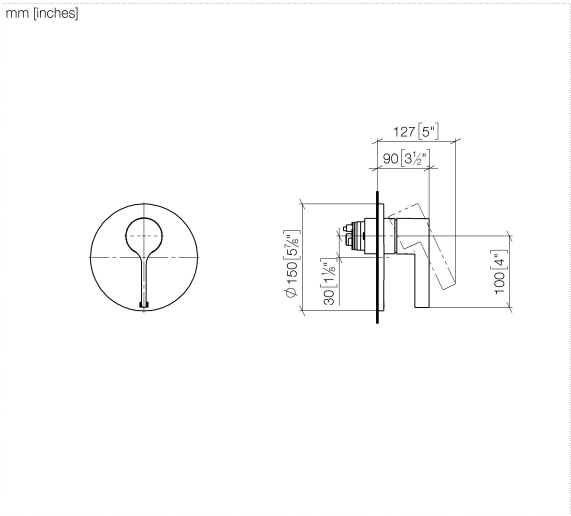
	Brushed Champagne (22kt Gold)	36 900 809-46
	Chrome	36 900 809-00
	Brushed Platinum	36 900 809-06
	Platinum	36 900 809-08
	Dark Chrome	36 900 809-19
	Brushed Light Gold	36 900 809-27
	Brushed Durabrass (23kt Gold)	36 900 809-28
	Brushed Dark Brass	36 900 809-39
	Brushed Bronze	36 900 809-42
	Champagne (22kt Gold)	36 900 809-47
	Brushed Dark Platinum	36 900 809-99

Required miscellaneous



- Pressure balanced valve -**
35 920 970 90

 - min. recess depth 80 mm
 - max. recess depth 105 mm



Flow rate chart



Codes & Standards

ASME A112.18.1 cUPC



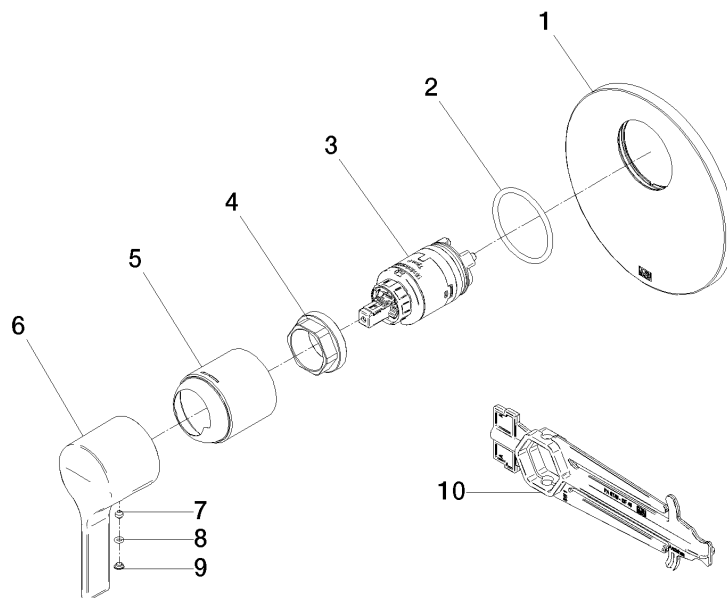
Pressure balanced valve without diverter

VAIA

36 900 809 Product version from 5/1/2023

Certificates and sustainability

IAPMO_4976 (



Spare parts list

No.	Item Number	Name	Quantity used	Delivery time
	2 09 14 10 084 90	seal	1.00	2
	3 90 15 05 069 00 90	cartridge	1.00	2
	6 09 20 80 023-46	handle	1.00	30
	7 90 31 11 063 00 90	pin	1.00	2
	4 09 24 04 448 90	nut	1.00	2
	10 90 30 09 064 00 90	key	1.00	2
	1 09 11 02 262-46	plate	1.00	30
	5 09 11 02 260-46	sleeve	1.00	30
	9 09 31 20 087-46	plug	1.00	60
	8 09 14 10 133 90	seal	1.00	2