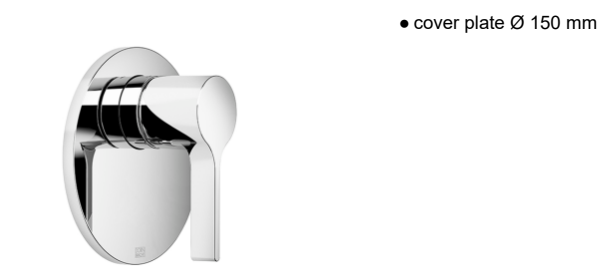


Pressure balanced valve without diverter

VAIA

36 900 809

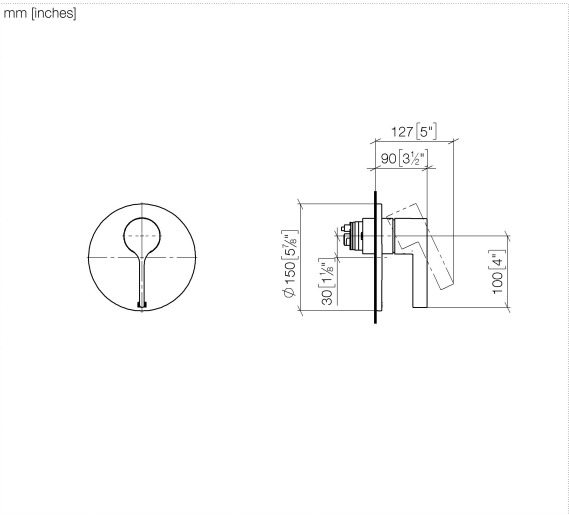
Product version from 5/1/2023



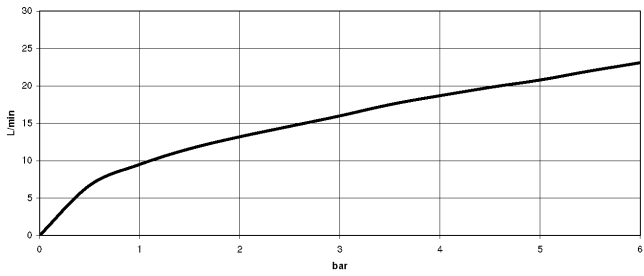
	Champagne (22kt Gold)	36 900 809-47
	Chrome	36 900 809-00
	Brushed Platinum	36 900 809-06
	Platinum	36 900 809-08
	Dark Chrome	36 900 809-19
	Brushed Light Gold	36 900 809-27
	Brushed Durabronze (23kt Gold)	36 900 809-28
	Brushed Dark Bronze	36 900 809-39
	Brushed Bronze	36 900 809-42
	Brushed Champagne (22kt Gold)	36 900 809-46
	Brushed Dark Platinum	36 900 809-99

Required miscellaneous

	<div> <div>Pressure balanced valve -</div> <div> <div>•min. recess depth 80 mm</div> <div>•max. recess depth 105 mm</div> </div> </div> <div>35 920 970 90</div>
--	--



Flow rate chart



Codes & Standards

ASME A112.18.1 cUPC



## Pressure balanced valve without diverter

---

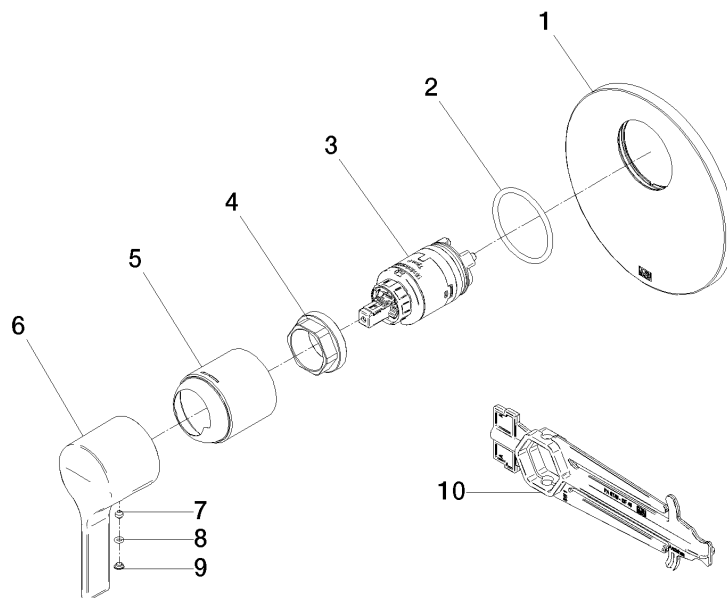
VAIA

36 900 809 Product version from 5/1/2023

### Certificates and sustainability

---

IAPMO\_4976 (



## Spare parts list

No.	Item Number	Name	Quantity used	Delivery time
8	09 14 10 133 90	seal	1.00	2
9	09 31 20 087-47	plug	1.00	30
10	90 30 09 064 00 90	key	1.00	2
3	90 15 05 069 00 90	cartridge	1.00	2
5	09 11 02 260-47	sleeve	1.00	60
2	09 14 10 084 90	seal	1.00	2
7	90 31 11 063 00 90	pin	1.00	2
6	09 20 80 023-47	handle	1.00	30
1	09 11 02 262-47	plate	1.00	30
4	09 24 04 448 90	nut	1.00	2