










Pressure balanced valve without diverter

36 900 845    Product version from 5/1/2024

- cover plate 90 x 150 mm



	Chrome	36 900 845-00
	Brushed Platinum	36 900 845-06
	Dark Chrome	36 900 845-19
	Brushed Light Gold	36 900 845-27
	Matte Black	36 900 845-33
	Brushed Chrome	36 900 845-93
	Brushed Dark Platinum	36 900 845-99

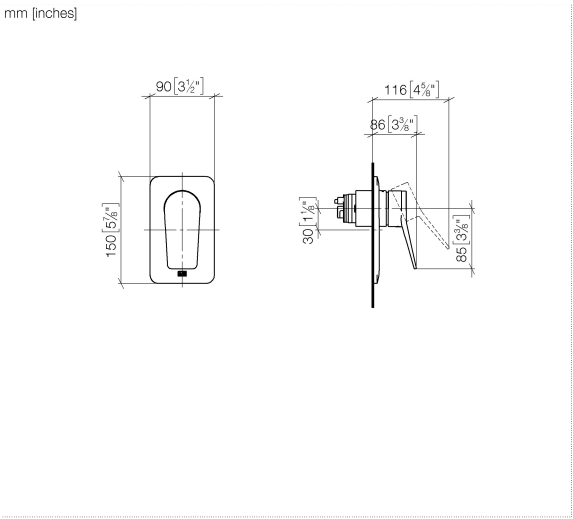
Required miscellaneous



- Pressure balanced valve -**                      35 920 970 90
- min. recess depth mm
  - max. recess depth mm

**Pressure balanced valve without diverter**

36 900 845    Product version from 5/1/2024



**Codes & Standards**

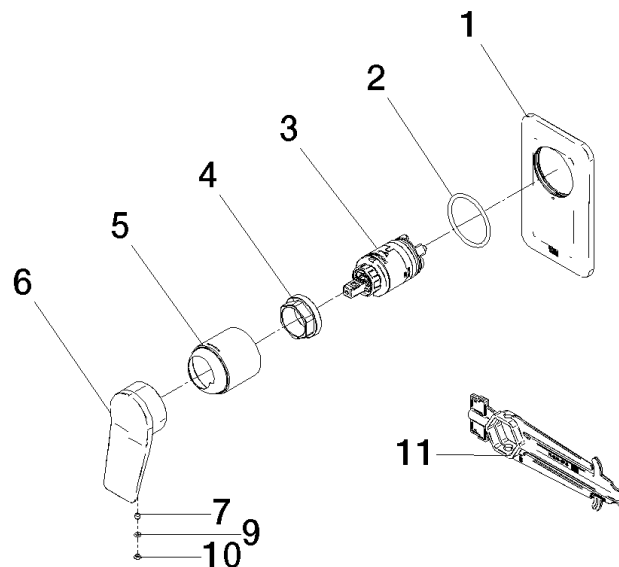
ASME A112.18.1                      cUPC

**Certificates**

IAPMO\_4976 (

## Pressure balanced valve without diverter

36 900 845 Product version from 5/1/2024



## Spare parts list

No.	Item Number	Name	Quantity used	Delivery time
1	09 11 02 300-00	plate	1	10
2	09 14 10 084 90	seal	1	2
3	90 15 05 069 00 90	cartridge	1	2
4	09 24 04 448 90	nut	1	2
5	09 11 02 260-00	sleeve	1	10
6	09 20 84 022-00	handle	1	10
7	90 31 11 030 00 90	pin	1	2
9	09 14 10 133 90	seal	1	2
10	09 31 20 087-00	plug	1	10
11	90 30 09 064 00 90	key	1	2