

Pressure balanced valve with diverter

SERIES SPECIFIC

36 915 660

Product version from 5/1/2024



- automatic diverter
- cover plate Ø 150 mm

|   |                               |               |
|---|-------------------------------|---------------|
|    | Chrome                        | 36 915 660-00 |
|    | Brushed Platinum              | 36 915 660-06 |
|    | Platinum                      | 36 915 660-08 |
|    | Dark Chrome                   | 36 915 660-19 |
|    | Light Gold                    | 36 915 660-26 |
|    | Brushed Light Gold            | 36 915 660-27 |
|    | Brushed Durabrass (23kt Gold) | 36 915 660-28 |
|    | Matte Black                   | 36 915 660-33 |
|    | Brushed Dark Brass            | 36 915 660-39 |
|   | Brushed Bronze                | 36 915 660-42 |
|  | Brushed Champagne (22kt Gold) | 36 915 660-46 |
|  | Champagne (22kt Gold)         | 36 915 660-47 |
|  | Brushed Chrome                | 36 915 660-93 |
|  | Brushed Dark Platinum         | 36 915 660-99 |

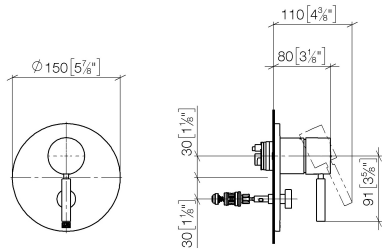
Required miscellaneous



- Pressure balanced valve -

35 920 970 90
- min. recess depth 80 mm
  - max. recess depth 105 mm

mm [inches]



Flow rate chart



Codes & Standards

ASME A112.18.1

cUPC



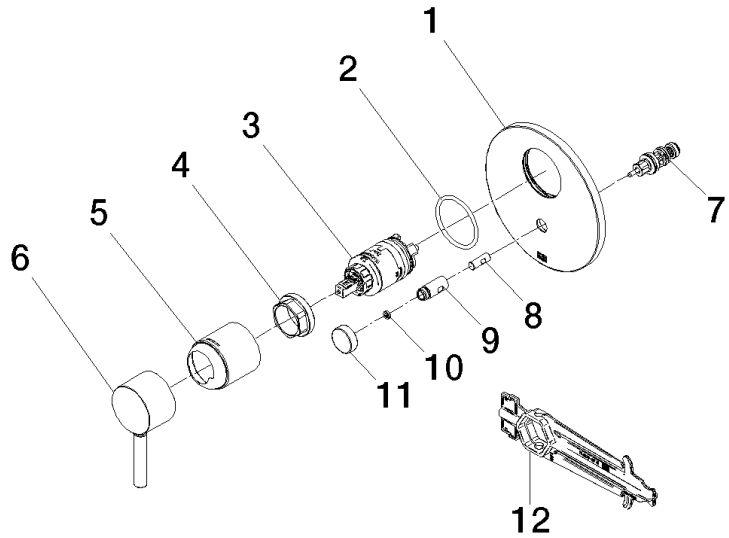
## Pressure balanced valve with diverter

SERIES SPECIFIC

36 915 660 Product version from 5/1/2024

Certificates and sustainability

IAPMO\_4976 (



### Spare parts list

| No. | Item Number        | Name      | Quantity used | Delivery time |
|-----|--------------------|-----------|---------------|---------------|
| 4   | 09 24 04 448 90    | nut       | 1.00          | 2             |
| 3   | 90 15 05 069 00 90 | cartridge | 1.00          | 2             |
| 8   | 09 24 03 226 90    | adaptor   | 1.00          | 2             |
| 5   | 09 11 02 260-00    | sleeve    | 1.00          | 10            |
| 1   | 09 11 02 261-00    | plate     | 1.00          | 10            |
| 11  | 09 20 78 056-00    | handle    | 1.00          | 10            |
| 7   | 90 21 34 081 00 90 | diverter  | 1.00          | 2             |
| 12  | 90 30 09 064 00 90 | key       | 1.00          | 2             |
| 2   | 09 14 10 084 90    | seal      | 1.00          | 2             |
| 10  | 09 24 03 227 90    | screw     | 2.00          | 2             |
| 6   | 90 20 66 004 00-00 | handle    | 1.00          | 10            |
| 9   | 09 31 09 139-00    | pull-rod  | 1.00          | 10            |