

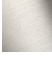



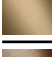




Pressure balanced valve with diverter

SERIES SPECIFIC

36 915 660
Product version from 5/1/2024



- automatic diverter
- cover plate Ø 150 mm

	Brushed Champagne (22kt Gold)	36 915 660-46
	Chrome	36 915 660-00
	Brushed Platinum	36 915 660-06
	Platinum	36 915 660-08
	Dark Chrome	36 915 660-19
	Light Gold	36 915 660-26
	Brushed Light Gold	36 915 660-27
	Brushed Durabrass (23kt Gold)	36 915 660-28
	Matte Black	36 915 660-33
	Brushed Dark Brass	36 915 660-39
	Brushed Bronze	36 915 660-42
	Champagne (22kt Gold)	36 915 660-47
	Brushed Chrome	36 915 660-93
	Brushed Dark Platinum	36 915 660-99

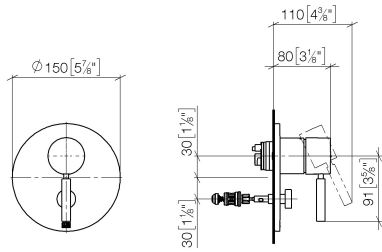
Required miscellaneous



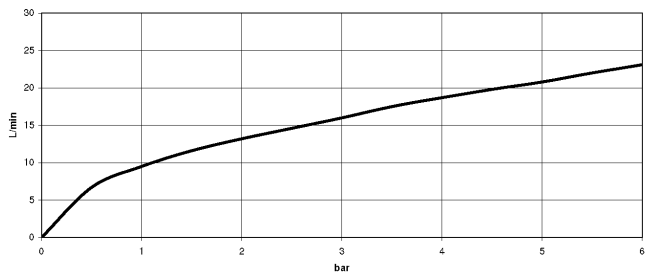
- Pressure balanced valve -**
•min. recess depth 80 mm
•max. recess depth 105 mm

35 920 970 90

mm [inches]



Flow rate chart



Codes & Standards

ASME A112.18.1 cUPC



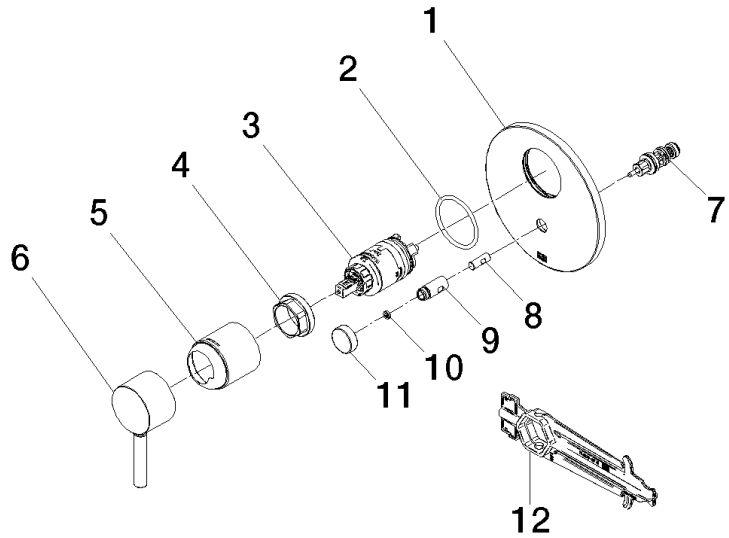
Pressure balanced valve with diverter

SERIES SPECIFIC

36 915 660 Product version from 5/1/2024

Certificates and sustainability

IAPMO_4976 (



Spare parts list

No.	Item Number	Name	Quantity used	Delivery time
9	09 31 09 139-46	pull-rod	1.00	30
11	09 20 78 056-46	handle	1.00	30
12	90 30 09 064 00 90	key	1.00	2
2	09 14 10 084 90	seal	1.00	2
4	09 24 04 448 90	nut	1.00	2
6	90 20 66 004 00-46	handle	1.00	30
10	09 24 03 227 90	screw	2.00	2
3	90 15 05 069 00 90	cartridge	1.00	2
7	90 21 34 081 00 90	diverter	1.00	2
5	09 11 02 260-46	sleeve	1.00	30
8	09 24 03 226 90	adaptor	1.00	2
1	09 11 02 261-46	plate	1.00	30