

Pressure balanced valve with diverter

SERIES SPECIFIC

36 915 670

Product version from 5/1/2024



- automatic diverter
- cover plate 90 x 150 mm

	Brushed Champagne (22kt Gold)	36 915 670-46
	Chrome	36 915 670-00
	Brushed Platinum	36 915 670-06
	Platinum	36 915 670-08
	Dark Chrome	36 915 670-19
	Brushed Light Gold	36 915 670-27
	Brushed Durabrass (23kt Gold)	36 915 670-28
	Matte Black	36 915 670-33
	Champagne (22kt Gold)	36 915 670-47
	Brushed Chrome	36 915 670-93
	Brushed Dark Platinum	36 915 670-99

Required miscellaneous

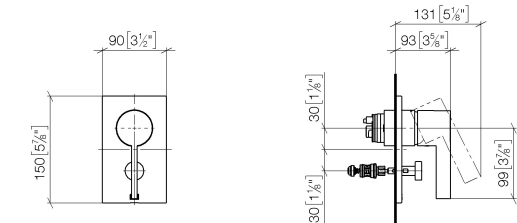


- Pressure balanced valve -

35 920 970 90

 - min. recess depth 80 mm
 - max. recess depth 105 mm

mm [inches]



Flow rate chart



Codes & Standards

ASME A112.18.1

cUPC



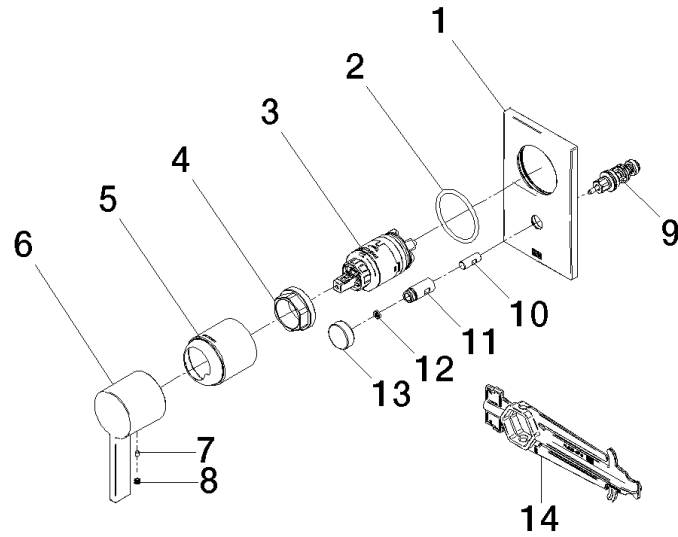
Pressure balanced valve with diverter

SERIES SPECIFIC

36 915 670 Product version from 5/1/2024

Certificates and sustainability

IAPMO_4976 (



Spare parts list

No.	Item Number	Name	Quantity used	Delivery time
	14 90 30 09 064 00 90	key	1.00	2
	12 09 24 03 227 90	screw	1.00	2
	7 09 31 11 099 90	pin	1.00	2
	4 09 24 04 448 90	nut	1.00	2
	13 09 20 78 056-46	handle	1.00	30
	8 90 31 20 109 00 90	plug	1.00	2
	3 90 15 05 069 00 90	cartridge	1.00	2
	10 09 24 03 226 90	adaptor	1.00	2
	1 09 11 02 258-46	plate	1.00	30
	2 09 14 10 084 90	seal	1.00	2
	11 09 31 09 139-46	pull-rod	1.00	30
	5 09 11 02 260-46	sleeve	1.00	30
	9 90 21 34 081 00 90	diverter	1.00	2
	6 09 20 67 007-46	handle	1.00	30