

Pressure balanced valve with diverter

VAIA

36 915 809

Product version from 5/1/2024



- automatic diverter
- cover plate Ø 150 mm

	Platinum	36 915 809-08
	Chrome	36 915 809-00
	Brushed Platinum	36 915 809-06
	Dark Chrome	36 915 809-19
	Brushed Light Gold	36 915 809-27
	Brushed Durabrass (23kt Gold)	36 915 809-28
	Brushed Dark Brass	36 915 809-39
	Brushed Bronze	36 915 809-42
	Brushed Champagne (22kt Gold)	36 915 809-46
	Champagne (22kt Gold)	36 915 809-47
	Brushed Dark Platinum	36 915 809-99

Required miscellaneous



- Pressure balanced valve -

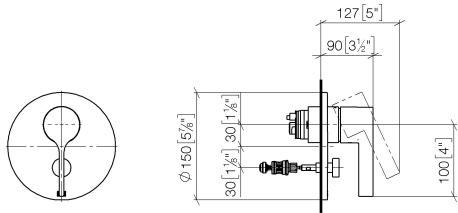
35 920 970 90
- min. recess depth 80 mm
  - max. recess depth 105 mm

Pressure balanced valve with diverter

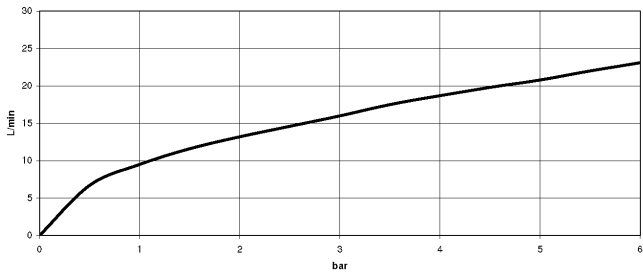
VAIA

36 915 809    Product version from 5/1/2024

mm [inches]



Flow rate chart



Codes & Standards

ASME A112.18.1    cUPC



## Pressure balanced valve with diverter

---

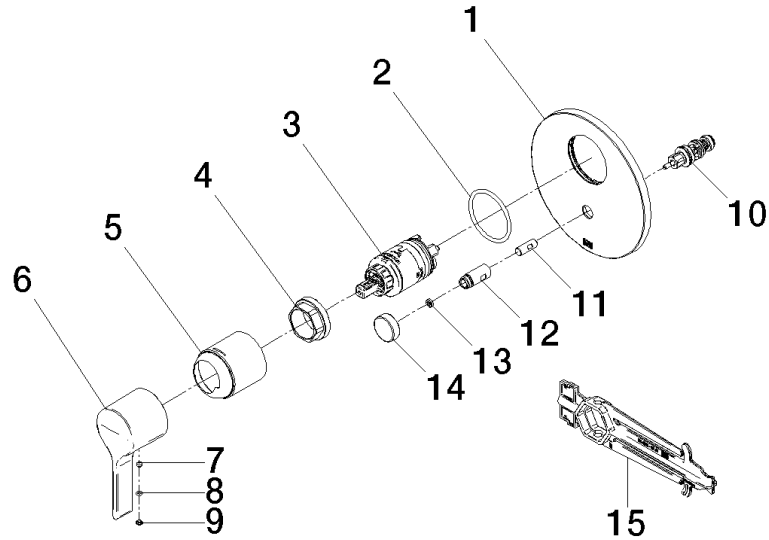
VAIA

36 915 809 Product version from 5/1/2024

### Certificates and sustainability

---

IAPMO\_4976 (



## Spare parts list

No.	Item Number	Name	Quantity used	Delivery time
	2 09 14 10 084 90	seal	1.00	2
	15 90 30 09 064 00 90	key	1.00	2
	6 09 20 80 023-08	handle	1.00	40
	10 90 21 34 081 00 90	diverter	1.00	2
	5 09 11 02 260-08	sleeve	1.00	40
	3 90 15 05 069 00 90	cartridge	1.00	2
	14 09 20 78 056-08	handle	1.00	40
	13 09 24 03 227 90	screw	1.00	2
	11 09 24 03 226 90	adaptor	1.00	2
	9 09 31 20 087-08	plug	1.00	60
	12 09 31 09 139-08	pull-rod	1.00	40
	1 09 11 02 261-08	plate	1.00	40
	8 09 14 10 133 90	seal	1.00	2
	4 09 24 04 448 90	nut	1.00	2
	7 90 31 11 063 00 90	pin	1.00	2