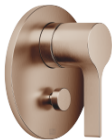


Pressure balanced valve with diverter

VAIA

36 915 809
Product version from 5/1/2024



- automatic diverter
- cover plate Ø 150 mm

| | | |
|---|-------------------------------|---------------|
|  | Brushed Bronze | 36 915 809-42 |
|  | Chrome | 36 915 809-00 |
|  | Brushed Platinum | 36 915 809-06 |
|  | Platinum | 36 915 809-08 |
|  | Dark Chrome | 36 915 809-19 |
|  | Brushed Light Gold | 36 915 809-27 |
|  | Brushed Durabrass (23kt Gold) | 36 915 809-28 |
|  | Brushed Dark Brass | 36 915 809-39 |
|  | Brushed Champagne (22kt Gold) | 36 915 809-46 |
|  | Champagne (22kt Gold) | 36 915 809-47 |
|  | Brushed Dark Platinum | 36 915 809-99 |

Required miscellaneous



- Pressure balanced valve -**
35 920 970 90

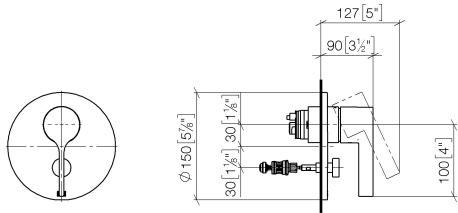
 - min. recess depth 80 mm
 - max. recess depth 105 mm

Pressure balanced valve with diverter

VAIA

36 915 809 Product version from 5/1/2024

mm [inches]



Flow rate chart



Codes & Standards

ASME A112.18.1 cUPC



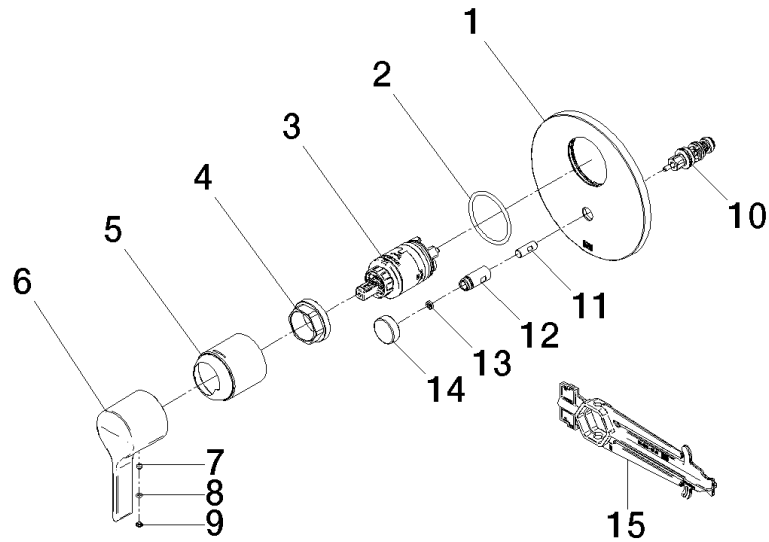
Pressure balanced valve with diverter

VAIA

36 915 809 Product version from 5/1/2024

Certificates and sustainability

IAPMO_4976 (



Spare parts list

| No. | Item Number | Name | Quantity used | Delivery time |
|-----|-----------------------|-----------|---------------|---------------|
| | 14 09 20 78 056-42 | handle | 1.00 | 60 |
| | 12 09 31 09 139-42 | pull-rod | 1.00 | 60 |
| | 5 09 11 02 260-42 | sleeve | 1.00 | 30 |
| | 13 09 24 03 227 90 | screw | 1.00 | 2 |
| | 1 09 11 02 261-42 | plate | 1.00 | 30 |
| | 9 09 31 20 087-42 | plug | 1.00 | 60 |
| | 4 09 24 04 448 90 | nut | 1.00 | 2 |
| | 8 09 14 10 133 90 | seal | 1.00 | 2 |
| | 10 90 21 34 081 00 90 | diverter | 1.00 | 2 |
| | 7 90 31 11 063 00 90 | pin | 1.00 | 2 |
| | 11 09 24 03 226 90 | adaptor | 1.00 | 2 |
| | 3 90 15 05 069 00 90 | cartridge | 1.00 | 2 |
| | 6 09 20 80 023-42 | handle | 1.00 | 60 |
| | 2 09 14 10 084 90 | seal | 1.00 | 2 |
| | 15 90 30 09 064 00 90 | key | 1.00 | 2 |