

Pressure balanced valve with diverter

VAIA

36 915 809 Product version from 5/1/2024



- automatic diverter
- cover plate Ø 150 mm

| | | |
|-------------------------------------------------------------------------------------|--------------------------------|---------------|
|  | Champagne (22kt Gold) | 36 915 809-47 |
|  | Chrome | 36 915 809-00 |
|  | Brushed Platinum | 36 915 809-06 |
|  | Platinum | 36 915 809-08 |
|  | Dark Chrome | 36 915 809-19 |
|  | Brushed Light Gold | 36 915 809-27 |
|  | Brushed Durabronze (23kt Gold) | 36 915 809-28 |
|  | Brushed Dark Bronze | 36 915 809-39 |
|  | Brushed Bronze | 36 915 809-42 |
|  | Brushed Champagne (22kt Gold) | 36 915 809-46 |
|  | Brushed Dark Platinum | 36 915 809-99 |

Required miscellaneous



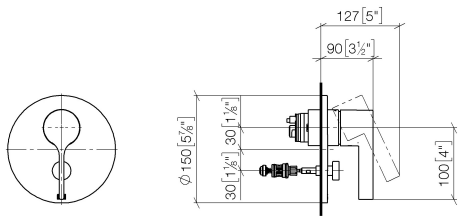
- Pressure balanced valve -** 35 920 970 90
- min. recess depth 80 mm
 - max. recess depth 105 mm

Pressure balanced valve with diverter

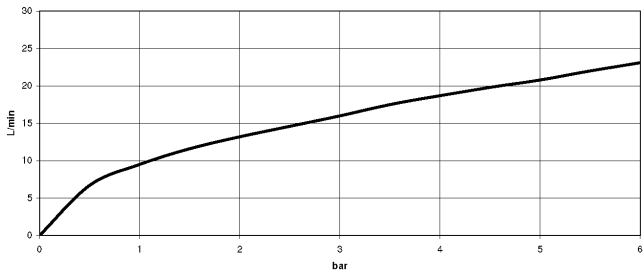
VAIA

36 915 809 Product version from 5/1/2024

mm [inches]



Flow rate chart



Codes & Standards

ASME A112.18.1 cUPC



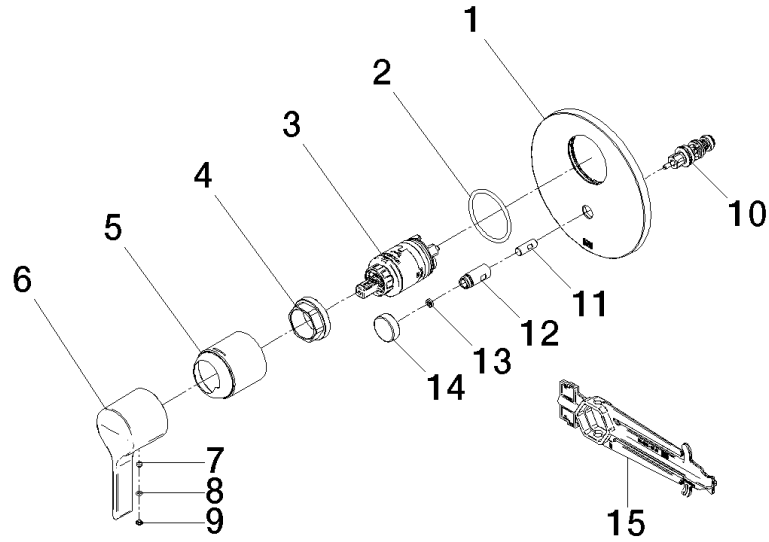
Pressure balanced valve with diverter

VAIA

36 915 809 Product version from 5/1/2024

Certificates and sustainability

IAPMO_4976 (



Spare parts list

| No. | Item Number | Name | Quantity used | Delivery time |
|-----|--------------------|-----------|---------------|---------------|
| 1 | 09 11 02 261-47 | plate | 1.00 | 30 |
| 4 | 09 24 04 448 90 | nut | 1.00 | 2 |
| 3 | 90 15 05 069 00 90 | cartridge | 1.00 | 2 |
| 13 | 09 24 03 227 90 | screw | 1.00 | 2 |
| 10 | 90 21 34 081 00 90 | diverter | 1.00 | 2 |
| 7 | 90 31 11 063 00 90 | pin | 1.00 | 2 |
| 15 | 90 30 09 064 00 90 | key | 1.00 | 2 |
| 5 | 09 11 02 260-47 | sleeve | 1.00 | 60 |
| 14 | 09 20 78 056-47 | handle | 1.00 | 30 |
| 6 | 09 20 80 023-47 | handle | 1.00 | 30 |
| 12 | 09 31 09 139-47 | pull-rod | 1.00 | 30 |
| 9 | 09 31 20 087-47 | plug | 1.00 | 30 |
| 2 | 09 14 10 084 90 | seal | 1.00 | 2 |
| 11 | 09 24 03 226 90 | adaptor | 1.00 | 2 |
| 8 | 09 14 10 133 90 | seal | 1.00 | 2 |