



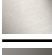

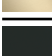


Pressure balanced valve with diverter

LISSE

36 915 845 Product version from 5/1/2024



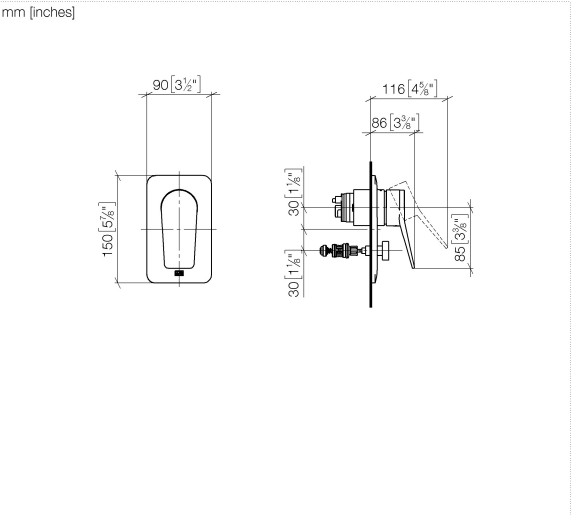
- automatic diverter
- cover plate 90 x 150 mm

	Brushed Dark Platinum	36 915 845-99
	Chrome	36 915 845-00
	Brushed Platinum	36 915 845-06
	Dark Chrome	36 915 845-19
	Brushed Light Gold	36 915 845-27
	Matte Black	36 915 845-33
	Brushed Chrome	36 915 845-93

Required miscellaneous



- Pressure balanced valve -** 35 920 970 90
- min. recess depth 80 mm
 - max. recess depth 105 mm



Flow rate chart



Codes & Standards

ASME A112.18.1 cUPC



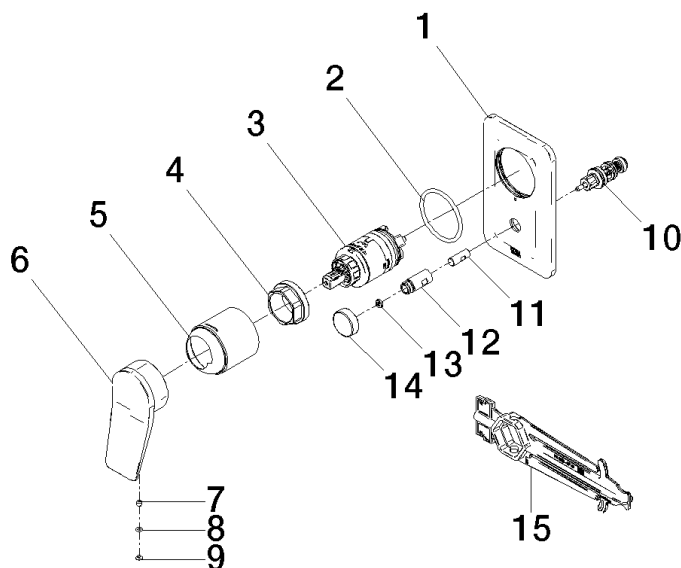
Pressure balanced valve with diverter

LISSE

36 915 845 Product version from 5/1/2024

Certificates and sustainability

IAPMO_4976 (



Spare parts list

No.	Item Number	Name	Quantity used	Delivery time
7	90 31 11 030 00 90	pin	1.00	2
1	09 11 02 301-99	plate	1.00	60
8	09 14 10 133 90	seal	1.00	2
9	09 31 20 087-99	plug	1.00	60
5	09 11 02 260-99	sleeve	1.00	20
14	09 20 78 056-99	handle	1.00	20
12	09 31 09 139-99	pull-rod	1.00	20
3	90 15 05 069 00 90	cartridge	1.00	2
6	09 20 84 022-99	handle	1.00	60
13	09 24 03 227 90	screw	1.00	2
15	90 30 09 064 00 90	key	1.00	2
2	09 14 10 084 90	seal	1.00	2
10	90 21 34 081 00 90	diverter	1.00	2
4	09 24 04 448 90	nut	1.00	2
11	09 24 03 226 90	adaptor	1.00	2