

## SERIES-VARIOUS AQUAHALO Rain panel - Chrome

41 750 979 Product version from 4/1/2024



- exposed trim parts
- Rain panel with 3 different flow modes
- AQUACIRCLE RAIN: Circular rain curtain, max. flow rate 6.8 l/min (at 3 bar)
- TEMPEST RAIN: Natural rain, max. flow rate 6.8 l/min (at 3 bar)
- DIAMOND RAIN: Ring of rain, max. flow rate 6.8 l/min (at 3 bar)
- Outer diameter: 605 mm, opening diameter: 465 mm
- Weight: 6 kg

### Separate LED power supply

#### Input LED power supply

- Input 100-240V AC 50-60Hz

#### Output LED power supply

- 350mA (CC)

#### Output specification LED power supply

- SELV (Safety Extra Low Voltage)
- Class 2

#### Ceiling module power supply

- 350mA (CC)
- Supply pipe 7 m

#### Spot lighting






- LED colour temperature approx. 3000 K
- Bulbs protected against splashing water
- Contains energy efficiency class bulbs
- Technology: LED, not dimmable
- Provided by customer: Light switch

#### Environment

- Not suitable for outdoor use.
- Not suitable for use in a steam room.
- Not suitable for use in chlorinated or salty environments.
- Comply with the protection zone regulations as defined in DIN VDE 0100, Part 701 (IEC 60364-7-701).

To meet the North American plumbing standards, this application must be installed with three-way diverter (rough included).

Pre-assembly kit for three-way diverter included

	Chrome	41 750 979-00 0010
	Brushed Platinum	41 750 979-06 0010
	Matte Black	41 750 979-33 0010
	Brushed Champagne (22kt Gold)	41 750 979-46 0010
	Champagne (22kt Gold)	41 750 979-47 0010

## Required miscellaneous



### SERIES-VARIOUS AQUAHALO 35 750 970-00 Concealed ceiling installation box 0010 - Chrome

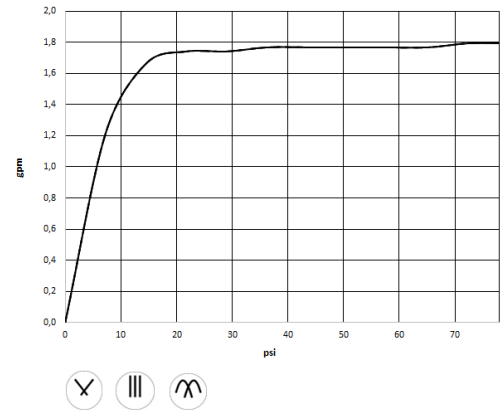
- concealed rough parts
- Pre-assembly kit for three-way diverter included
- Ceiling installation enclosure 605 x 605 x 95 mm
- Weight: 10 kg
- min. recess depth mm

SERIES-VARIOUS AQUAHALO Rain panel - Chrome

41 750 979    Product version from 4/1/2024

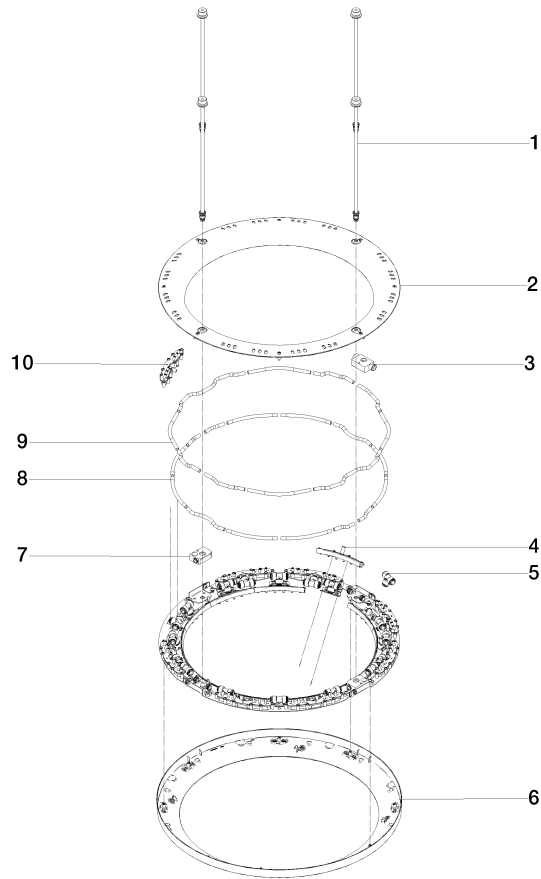


Flow rate chart



## SERIES-VARIOUS AQUAHALO Rain panel - Chrome

41 750 979 Product version from 4/1/2024



### Spare parts list

No.	Item Number	Name	Quantity used	Delivery time
1	90 28 22 605 01-00	distributor	4	10
2	90 12 05 087 00-00	casing	1	10
3	90 24 03 535 01 90	distributor	2	10
4	90 17 09 060 02 90	jet module AQUACIRCLE	12	2
5	90 24 04 384 00 90	adaptor	20	-
Spare part can no longer be ordered, please order the replacement item				
6	90 12 05 088 00-00	casing	1	10
7	90 24 03 535 00 90	distributor	2	2
8	90 30 03 118 00 90	hose	1	-
Spare part can no longer be ordered, please order the replacement item				
9	90 30 03 117 00 90	hose	1	-
Spare part can no longer be ordered, please order the replacement item				
10	90 17 09 061 01 90	jet module TEMPEST	8	2