



- exposed trim parts
- Rain panel with 3 different flow modes
- AQUACIRCLE RAIN: Circular rain curtain, max. flow rate 6.8 l/min (at 3 bar)
- TEMPEST RAIN: Natural rain, max. flow rate 6.8 l/min (at 3 bar)
- DIAMOND RAIN: Ring of rain, max. flow rate 6.8 l/min (at 3 bar)

**Technical data:**

- Outer diameter: 605 mm, opening diameter: 465 mm
- Weight: 6 kg

**Electric:**

**Separate LED power supply**

- 350mA (CC)

**Input LED power supply**

- 350mA (CC)
- Input 100-240V AC 50-60Hz
- Technology: LED, not dimmable

**Spot lighting**

**Output LED power supply**

**Output specification LED power supply**

- IP67
- SELV (Safety Extra Low Voltage)
- Class 2

**Ceiling module power supply**

- Supply pipe 7 m
- LED colour temperature approx. 3000 K
- Bulbs protected against splashing water
- Provided by customer: Light switch

**Environment**

**Planning tips:**



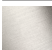


- Not suitable for outdoor use.
- Not suitable for use in a steam room.
- Not suitable for use in chlorinated or salty environments.
- Comply with the protection zone regulations as defined in DIN VDE 0100, Part 701 (IEC 60364-7-701).

**Notes:**

- Recommended control element: xTool
- Contains energy efficiency class bulbs

To meet the North American plumbing standards, this application must be installed with three-way diverter (rough included).

Pre-assembly kit for three-way diverter included

	Matte Black	41 750 979-33 0010
	Chrome	41 750 979-00 0010
	Brushed Platinum	41 750 979-06 0010
	Brushed Champagne (22kt Gold)	41 750 979-46 0010
	Champagne (22kt Gold)	41 750 979-47 0010

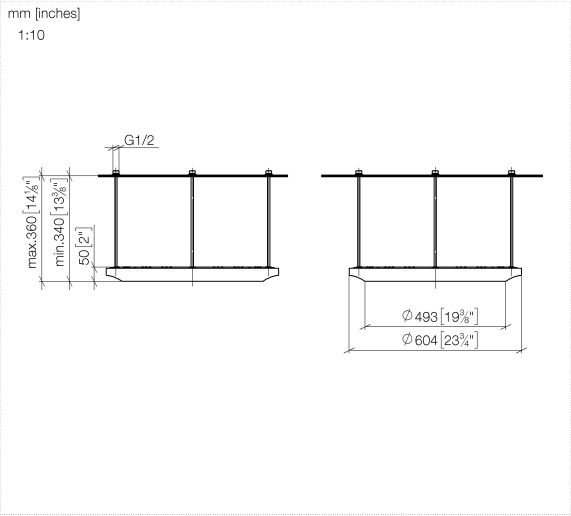
Required miscellaneous



**SERIES-VARIOUS AQUAHALO** 35 750 970-33  
**Concealed ceiling installation box** 0010  
**- Matte Black**

- concealed rough parts
- Pre-assembly kit for three-way diverter included
- Ceiling installation enclosure 605 x 605 x 95 mm
- Weight: 10 kg
- min. recess depth 110 mm

41 750 979 Product version from 4/1/2024



Codes & Standards

ASME A112.18.1

cUPC

EPA WaterSense

WaterSense



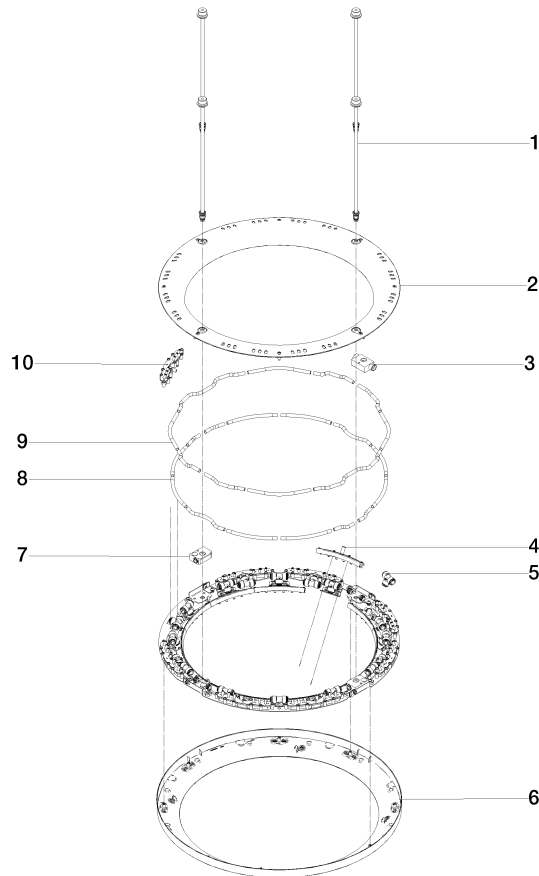
Certificates and sustainability

IAPMO\_11777

IAPMO\_4976 (

41 750 979 Product version from 4/1/2024

Parts for other  
finishes can be found  
here: [Chrome](#)



## Spare parts list

No.	Item Number	Name	Quantity used	Delivery time
1	90 28 22 605 01-33	distributor	4.00	30
2	90 12 05 087 00-33	casing	1.00	30
5	90 24 04 384 00 90	adaptor	20.00	2
9	90 30 03 117 00 90	hose	1.00	2
7	90 24 03 535 00 90	distributor	2.00	2
6	90 12 05 088 00-33	casing	1.00	30
3	90 24 03 535 01 90	distributor	2.00	2
4	90 17 09 060 02 90	jet module AQUACIRCLE	12.00	2
8	90 30 03 118 00 90	hose	1.00	2
10	90 17 09 061 01 90	jet module TEMPEST	8.00	2