

42 765 970 90 Product version from 3/12/2018 to 4/29/2019



- automatic hygiene flush
- suitable for thermal disinfection
- adjustable follow-up time
- high-frequency sensors with self-calibration
- magnetic valve
- temperature setting via thermostat
- 100-240 V AC / 12 V DC, 50-60 Hz, 18 W power supply unit, incl. country-specific adapter set
- WRAS

**Cannot be combined with basins in conducting materials (e.g. steel, river stone).**

**Use with top-mounted basins is excluded.**

**Cannot be combined with basins that have a closing drain.**

**ATTENTION: Separate terms and conditions for electronic articles are applicable.**

Cannot be combined with basins in conducting materials (e.g. steel, river stone).

Use with top-mounted basins is excluded.

Cannot be combined with basins that have a closing drain.

ATTENTION: Separate terms and conditions for electronic articles are applicable.

## Required miscellaneous



**eSET Touchfree Basin mixer with temperature setting for combining with free-standing fittings -** 35 740 970-90 0010

## Recommended miscellaneous

**Extension for Touchfree 500 mm -** 12 765 970 90

## Required miscellaneous

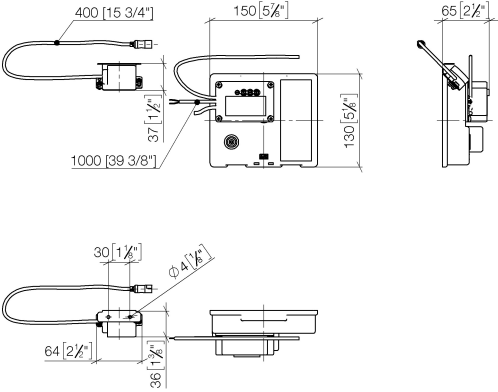


**eSET Touchfree Basin mixer with temperature setting for combining with wall-mounted fittings -** 35 741 970-90 0010

- max. recess depth 125 mm
- min. recess depth 90 mm

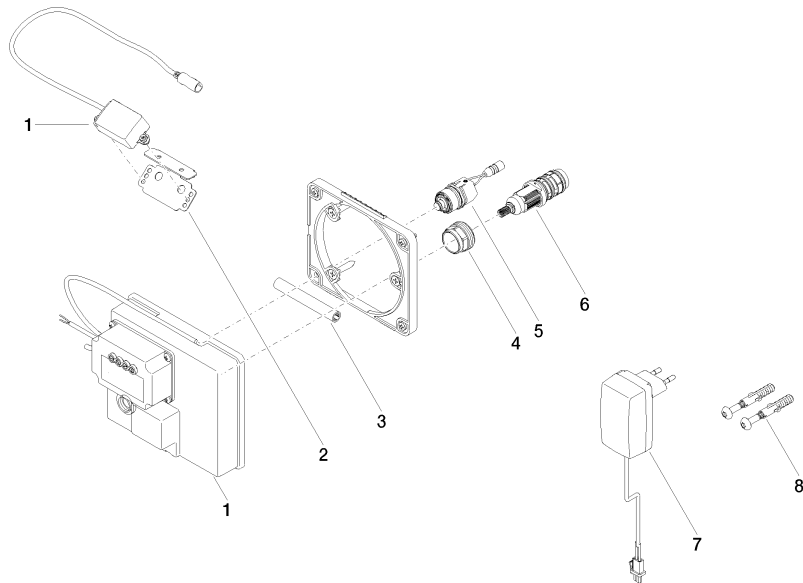
42 765 970 90    Product version from 3/12/2018 to 4/29/2019

mm [inches]



Codes & Standards			
CSA C22.2 No. 14	CSA C22.2 No. 68	DIN 4109	ISO 3822
Scottish Water Byelaws	UK Water Supply Regulations	UL 1951	Ü-Zeichen

Certificates and sustainability				
LGA_29	IAPMO_	CE000001_eSet_Tou chfree_20171206_D E_sig	CE000002_eSet_Tou chfree_20171206_E N_sig	LGA_29
WRAS_250302				



## Spare parts list

No.	Item Number	Name	Quantity used	Delivery time
5	04 30 50 079 00 90	valve	1.00	2
6	90 15 02 013 00 90	cartridge	1.00	2
8	04 30 31 024 01 90	fixing set	1.00	2
2	90 17 20 199 00 90	holder	1.00	2
1	90 10 01 177 00 90	electronic accessories	1.00	2
4	09 23 10 129 90	nut	1.00	2
7	04 10 01 246 00 90	electronic accessories	1.00	2
3	90 23 01 124 00 90	sleeve	1.00	2