

## IMO Washstand fitting with electronic opening and closing function without pop-up waste - Brushed Light Gold

IMO

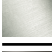
44 515 670 Product version from 6/1/2024



- Infrared sensor technology
- 130mm projection
- height of mixer 135 mm
- height up to aerator 74 mm
- hole diameter 35 mm
- fixed spout
- max. flow 4.5 l/min
- laminar flow
- suitable for thermal disinfection
- Automatic shut-off after pre-set time is reached
- Direct temperature control at faucet
- Battery-powered (batteries not included)
- 1x CR-P2 battery required
- lead-free
- 2 x pressure hose with 3/8" cap nut
- This product can help a building meet the requirements of Green Building Rating Systems, e.g. LEED®, BREEAM®, DGNB

Batteries not included

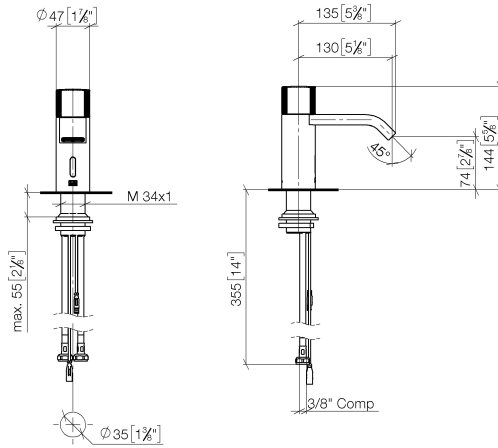
Caution: A temperature stabiliser is recommended for installations in public areas. Please observe your local building codes.

|   |                                |                    |
|---|--------------------------------|--------------------|
|  | Brushed Light Gold             | 44 515 670-27 0010 |
|  | Chrome                         | 44 515 670-00 0010 |
|  | Brushed Platinum               | 44 515 670-06 0010 |
|  | Platinum                       | 44 515 670-08 0010 |
|  | Brushed Durabronze (23kt Gold) | 44 515 670-28 0010 |
|  | Matte Black                    | 44 515 670-33 0010 |
|  | Brushed Chrome                 | 44 515 670-93 0010 |
|  | Brushed Dark Platinum          | 44 515 670-99 0010 |

## IMO Washstand fitting with electronic opening and closing function without pop-up waste - Brushed Light Gold

IMO

44 515 670 Product version from 6/1/2024  
mm [inches]



### Codes & Standards

|  |        |
|--|--------|
| California Energy<br>Commission<br>(CEC) | NSF372 |
|--|--------|

### Certificates and sustainability

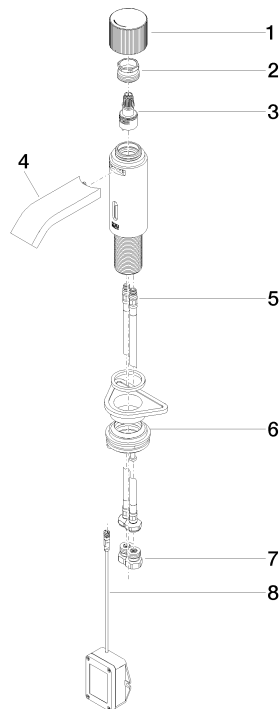
IAPMO\_6397

## IMO Washstand fitting with electronic opening and closing function without pop-up waste - Brushed Light Gold

IMO

44 515 670 Product version from 6/1/2024

Parts for other  
finishes can be found  
here: [Chrome](#)



### Spare parts list

| No. | Item Number        | Name                  | Quantity used | Delivery time |
|-----|--------------------|-----------------------|---------------|---------------|
| 8   | 90 10 01 250 00 90 | casingwithout battery | 1.00          | 2             |
| 6   | 04 23 10 044 08 90 | fixing set            | 1.00          | 2             |
| 5   | 04 30 04 100 00 90 | hose                  | 2.00          | 2             |
| 4   | 90 28 22 239 01-27 | spout                 | 1.00          | 30            |
| 7   | 90 24 03 314 10 90 | nipple set            | 2.00          | 2             |
| 1   | 90 20 66 122 00-27 | handle                | 1.00          | 30            |
| 2   | 09 24 04 565 90    | nut                   | 1.00          | 60            |
| 3   | 90 90 03 173 00 90 | top                   | 1.00          | 2             |