

# Showerpipe with shower thermostat - Champagne (22kt Gold)

IMO

ST 050 305 3979



Fits: IMO, LULU, TARA, LISSÉ, VAIA, META, CYO

- shower with fixed riser projection 453mm
- Rain shower: PURE RAIN, max. flow rate 6.8 l/min (at 3 bar)
- rain shower Ø 220 mm
- rain shower with anti-scale system
- Hand shower: COMPACT RAIN, max. flow rate 6.8 l/min (at 3 bar)
- spray head Ø 100mm
- rotary diverter with volume control and shut-off function
- slide-on rosettes Ø 70 mm
- height of fittings up to rain shower (bottom edge) 1009mm
- height of fittings up to top edge of elbow 1150mm
- gauge 150 mm - 13 mm
- metal shower hose 1750mm with integrated anti-twist protection
- 1/2" connection
- slide bar
- Pipe diameter 23.5 mm
- This product can help a building meet the requirements of Green Building Rating Systems, e.g. LEED®, BREEAM®, DGNB

**Intrinsic protection against back flow.**

**NOTE: Hand shower sold separately. Please see hand shower options under the miscellaneous articles section of each series.**

	Champagne (22kt Gold)	ST 050 305 3979-47 0010
	Chrome	ST 050 305 3979-00 0010
	Chrome	ST 050 305 1979-00
	Brushed Platinum	ST 050 305 3979-06 0010
	Brushed Platinum	ST 050 305 1979-06
	Platinum	ST 050 305 3979-08 0010
	Platinum	ST 050 305 1979-08
	Dark Chrome	ST 050 305 3979-19 0010
	Dark Chrome	ST 050 305 1979-19
	Light Gold	ST 050 305 3979-26 0010
	Light Gold	ST 050 305 1979-26
	Brushed Light Gold	ST 050 305 3979-27 0010
	Brushed Light Gold	ST 050 305 1979-27
	Brushed Durabronze (23kt Gold)	ST 050 305 3979-28 0010
	Brushed Durabronze (23kt Gold)	ST 050 305 1979-28
	Matte Black	ST 050 305 3979-33 0010
	Matte Black	ST 050 305 1979-33
	Brushed Bronze	ST 050 305 3979-42 0010
	Brushed Bronze	ST 050 305 1979-42
	Brushed Champagne (22kt Gold)	ST 050 305 3979-46 0010
	Brushed Champagne (22kt Gold)	ST 050 305 1979-46
	Champagne (22kt Gold)	ST 050 305 1979-47
	Brushed Chrome	ST 050 305 3979-93 0010
	Brushed Chrome	ST 050 305 1979-93
	Brushed Dark Platinum	ST 050 305 3979-99 0010
	Brushed Dark Platinum	ST 050 305 1979-99

Showerpipe with shower thermostat - Champagne (22kt Gold)

IMO

ST 050 305 3979

Individual components of this set

You need the following components for this set



1x

34 459 979-47 0010



1x

28 025 979-47 0010

# Showerpipe with shower thermostat - Champagne (22kt Gold)

IMO

ST 050 305 3979



Fits: IMO, LULU, TARA, LISSÉ, VAIA, META

- shower with fixed riser projection 453mm
  - overhead shower: rain flow
  - rain shower with anti-scale system
  - rain shower Ø 220 mm
  - max. rainshower flow 6.8 l/min
  - rotary diverter with volume control and shut-off function
  - height of fittings up to top edge of elbow 1150mm
  - slide-on rosettes Ø 70 mm
  - height of fittings up to rain shower (bottom edge) 1009mm
  - gauge 150 mm - 13 mm
  - metal shower hose 1750mm with integrated anti-twist protection
  - 1/2" connection
  - slide bar
  - Pipe diameter 23.5 mm
  - quick clearing
  - This product reduces water consumption by % (compared to requirements of EPAct '92)
  - This product can contribute to Water Use Reduction in LEED® Green Building Rating
- Intrinsic protection against back flow.**

**NOTE: Hand shower sold separately. Please see hand shower options under the miscellaneous articles section of each series.**

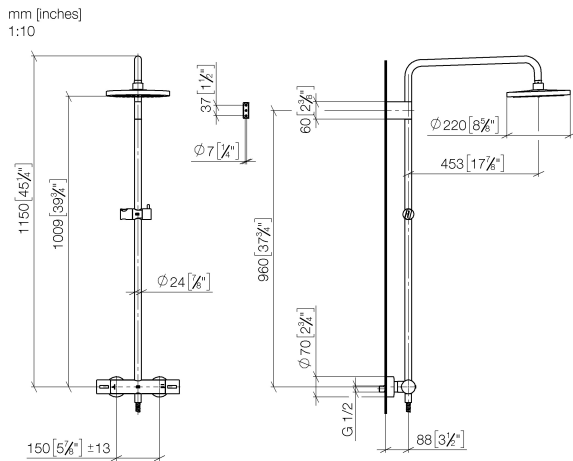
Intrinsic protection against back flow.

NOTE: Hand shower sold separately. Please see hand shower options under the miscellaneous articles section of each series.

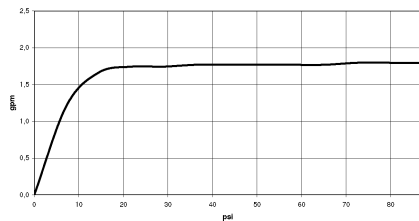
	Champagne (22kt Gold)	34 459 979-47 001
	Chrome	34 459 979-00 001
	Brushed Platinum	34 459 979-06 001
	Platinum	34 459 979-08 001
	Dark Chrome	34 459 979-19 001
	Light Gold	34 459 979-26 001
	Brushed Light Gold	34 459 979-27 001
	Brushed Durabrass (23kt Gold)	34 459 979-28 001
	Matte Black	34 459 979-33 001
	Brushed Bronze	34 459 979-42 001
	Brushed Champagne (22kt Gold)	34 459 979-46 001
	Brushed Chrome	34 459 979-93 001
	Brushed Dark Platinum	34 459 979-99 001



ST 050 305 3979



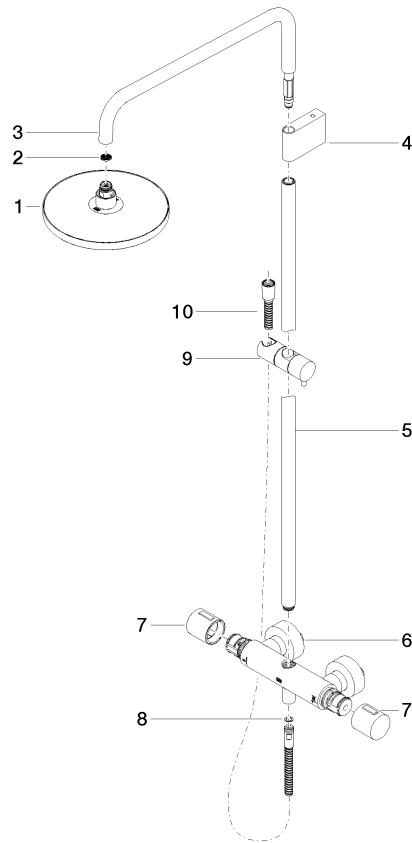
### Flow rate chart



Codes & Standards

ASME	California Energy
A112.18.1/CSA	Commission
B125.1	(CEC)

**Product version from 7/1/2023**





Showerpipe with shower thermostat - Champagne (22kt Gold)

IMO

ST 050 305 3979

**Spare parts list**

**Product version from 7/1/2023**

No.	Item Number	Name	Quantity used	Delivery time
	04 12 05 092 10-47	shower	11	60



## Showerpipe with shower thermostat - Champagne (22kt Gold)

IMO


ST 050 305 3979



Fits: IMO, LULU, MADISON, MEM, TARA,  
CL.1, LISSÉ, VAIA, META, CYO

- spray head Ø 100mm
- COMPACT RAIN, max. flow rate 5 l/min (at 3 bar)
- with anti-scale system
- 1/2" connection
- This product reduces water consumption by % (compared to requirements of EPAct '92)
- This product can contribute to Water Use Reduction in LEED® Green Building Rating
- This product can help a building meet the requirements of Green Building Rating Systems, e.g. LEED®, BREEAM®, DGNB

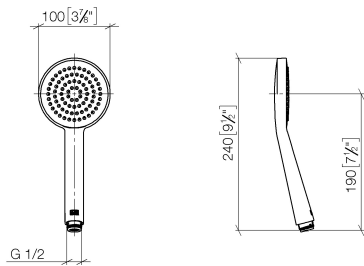
Intrinsic protection against back flow.

	Champagne (22kt Gold)	28 025 979-47 001
	Chrome	28 025 979-00 001
	Brushed Platinum	28 025 979-06 001
	Platinum	28 025 979-08 001
	Dark Chrome	28 025 979-19 001
	Light Gold	28 025 979-26 001
	Brushed Durabrass (23kt Gold)	28 025 979-28 001
	Matte Black	28 025 979-33 001
	Brushed Champagne (22kt Gold)	28 025 979-46 001
	Brushed Chrome	28 025 979-93 001
	Brushed Dark Platinum	28 025 979-99 001

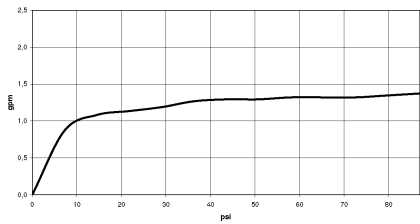


ST 050 305 3979

mm [inches]



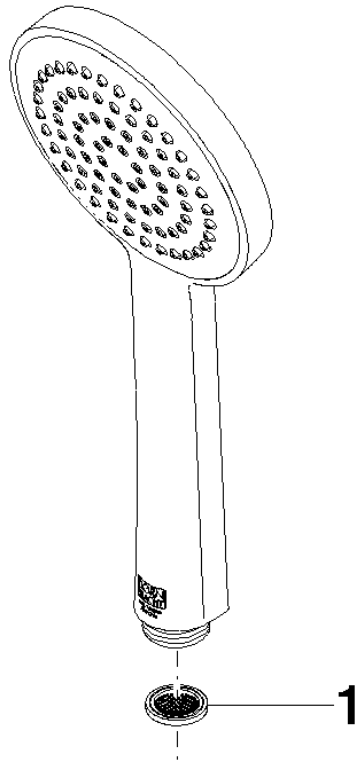
### Flow rate chart





**Product version from 4/1/2023**

Parts for other  
finishes can be found  
here: [Chrome](#)





Showerpipe with shower thermostat - Champagne (22kt Gold)

IMO

ST 050 305 3979

**Spare parts list**

**Product version from 4/1/2023**

No.	Item Number	Name	Quantity used	Delivery time
	09 23 01 039 90	sieve	1	2