

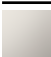


# TARA Shower pipe with shower mixer 300 mm - Brushed Bronze

TARA

ST 050 309 1892



- shower with fixed riser projection 420mm
- Rain shower: PURE RAIN, max. flow rate 6.8 l/min (at 3 bar)
- Function from: 6.5 l/min
- rain shower Ø 300 mm
- rain shower with anti-scale system
- Hand shower: COMPACT RAIN, max. flow rate 6.8 l/min (at 3 bar)
- spray head Ø 100mm
- rotary diverter for fixed-riser shower/hand shower
- height of fittings up to rain shower (bottom edge) 850mm
- height of fittings up to top edge of elbow 1167mm
- rosette for shower holder Ø 55mm
- rosette for wall mounting Ø 57mm
- rosette for shower mixer Ø 65mm
- gauge 150 mm - 13 mm
- 1500 mm metal shower hose
- 1/2" connection
- Pipe diameter 20 mm

	Brushed Bronze	ST 050 309 1892-42
	Chrome	ST 050 309 1892-00
	Brushed Platinum	ST 050 309 1892-06
	Platinum	ST 050 309 1892-08
	Dark Chrome	ST 050 309 1892-19
	Brushed Durabronz (23kt Gold)	ST 050 309 1892-28
	Matte Black	ST 050 309 1892-33
	Brushed Champagne (22kt Gold)	ST 050 309 1892-46
	Champagne (22kt Gold)	ST 050 309 1892-47
	Brushed Chrome	ST 050 309 1892-93
	Brushed Dark Platinum	ST 050 309 1892-99

## Individual components of this set

You need the following components for this set

1x 28 018 979-42 0010



1x 26 622 892-42



Error: Subreport could not be shown.

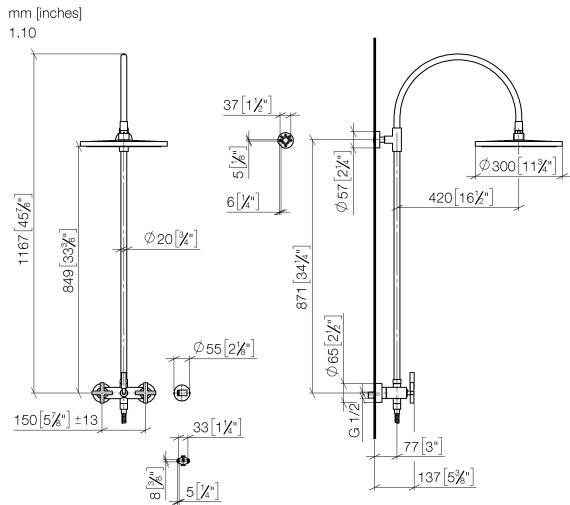




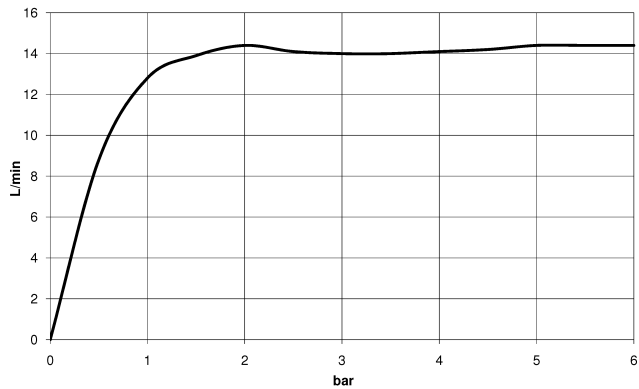




ST 050 309 1892



**Flow rate chart**

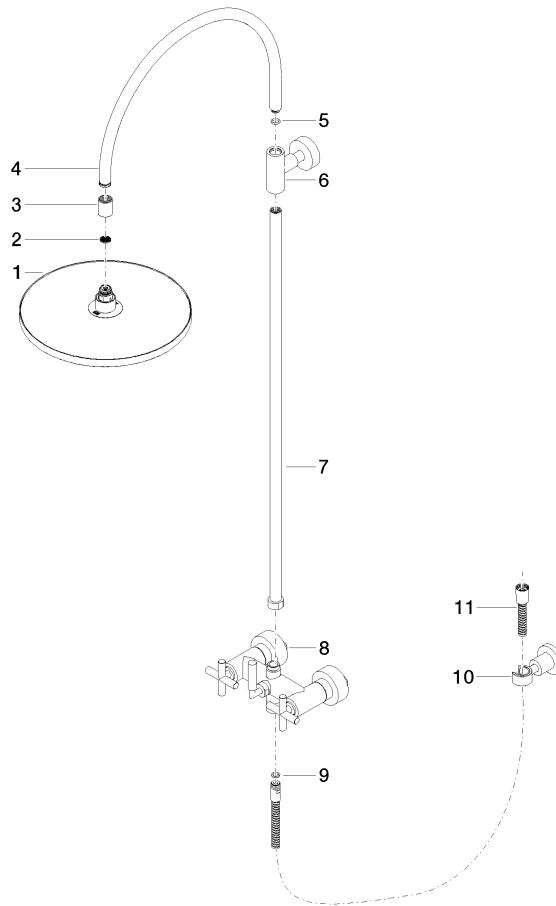


## Certificates

Belgaqua\_24-004-2 LGA\_38



**Product version from 4/1/2024**







TARA Shower pipe with shower mixer 300 mm - Brushed Bronze

TARA

ST 050 309 1892

**Spare parts list**

**Product version from 4/1/2024**

No.	Item Number	Name	Quantity used	Delivery time
	04 12 05 091 00-42	shower	11	60