

WATER TUBE Kneipp wall elbow - Brushed Platinum

LULU

ST 050 611 6979



Fits: LULU, MADISON, TARA, LISSÉ, VAIA, META

- LAMINAR FLOW, max. flow rate 15 l/min (at 3 bar)
- rosette Ø 70 mm
- holder for Kneipp hose
- hose nozzle with sleeve M33
- with holding ring
- 1/2" wall elbow

	Brushed Platinum	ST 050 611 6979-06
	Chrome	ST 050 611 6979-00
	Platinum	ST 050 611 6979-08
	Dark Chrome	ST 050 611 6979-19
	Brushed Durabronze (23kt Gold)	ST 050 611 6979-28
	Matte Black	ST 050 611 6979-33
	Brushed Champagne (22kt Gold)	ST 050 611 6979-46
	Champagne (22kt Gold)	ST 050 611 6979-47
	Brushed Chrome	ST 050 611 6979-93
	Brushed Dark Platinum	ST 050 611 6979-99

Individual components of this set

You need the following components for this set



1x 27 820 979-06



1x 28 285 979-06

WATER TUBE Kneipp wall elbow - Brushed Platinum

LULU

ST 050 611 6979



Fits: LULU, MADISON, TARA, LISSÉ, VAIA, META

- LAMINAR FLOW, max. flow rate 15 l/min (at 3 bar)
- rosette Ø 70 mm
- holder for Kneipp hose
- 1/2" wall elbow
- without hose

Intrinsic protection against back flow.

Product change as of 1.4.2023: max. flow 15 l/min

Intrinsic protection against back flow.

Product change as of 1.4.2023: max. flow 15 l/min

	Brushed Platinum	27 820 979-0
	Chrome	27 820 979-0
	Platinum	27 820 979-0
	Dark Chrome	27 820 979-1
	Brushed Durabronze (23kt Gold)	27 820 979-2
	Matte Black	27 820 979-3
	Brushed Bronze	27 820 979-4
	Brushed Champagne (22kt Gold)	27 820 979-4
	Champagne (22kt Gold)	27 820 979-4
	Brushed Chrome	27 820 979-9
	Brushed Dark Platinum	27 820 979-9

ST 050 611 6979

6
—
10
—
8
—
9
—
8
—
3
—
2
—
6
—
7
—
3
—
9
—

Required miscellaneous



Concealed adapter - 35 080 970-90
0010

Required miscellaneous



WATER TUBE Kneipp hose black 28 286 979-06
2000 mm - Brushed Platinum
●with holding ring
●hose nozzle with sleeve M33

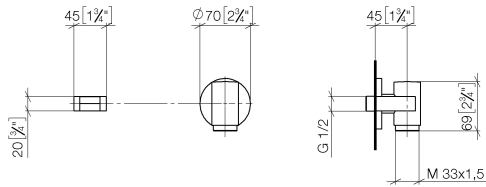
Required miscellaneous



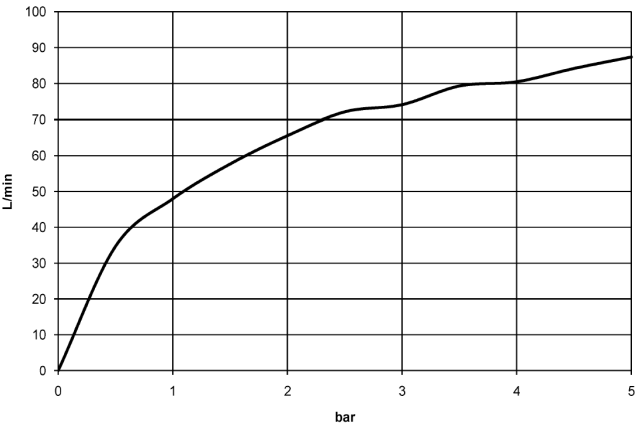
WATER TUBE Kneipp hose white 28 285 979-06
2000 mm - Brushed Platinum
●with holding ring
●hose nozzle with sleeve M33

ST 050 611 6979

mm [inches]



Flow rate chart



Certificates

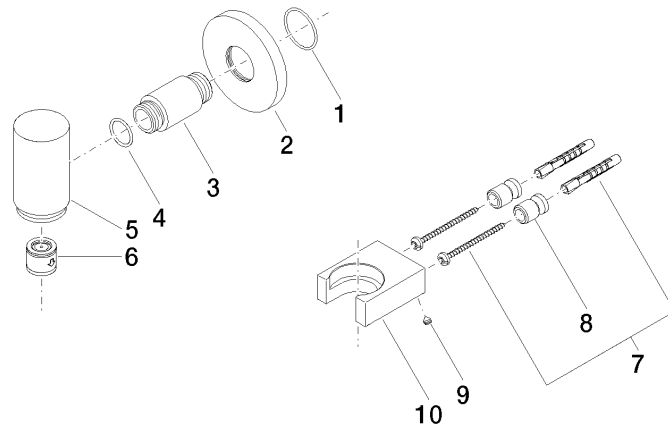
Belgaqua_21-381-2

Codes & Standards

EN 1717

Product version up to 3/12/2018

Product version from 3/12/2018





WATER TUBE Kneipp wall elbow - Brushed Platinum

LULU

ST 050 611 6979

Spare parts list

Product version up to 3/12/2018

Product version from 3/12/2018

No.	Item Number	Name	Quantity used	Delivery time
	09 14 10 135 90	seal	10	2

WATER TUBE Kneipp wall elbow - Brushed Platinum

LULU

ST 050 611 6979



- hose nozzle with sleeve M33
- with holding ring

	Brushed Platinum	28 285 979-0
	Chrome	28 285 979-0
	Platinum	28 285 979-0
	Dark Chrome	28 285 979-1
	Brushed Durabronze (23kt Gold)	28 285 979-2
	Matte Black	28 285 979-3
	Brushed Champagne (22kt Gold)	28 285 979-4
	Champagne (22kt Gold)	28 285 979-4
	Brushed Chrome	28 285 979-9
	Brushed Dark Platinum	28 285 979-9



WATER TUBE Kneipp wall elbow - Brushed Platinum

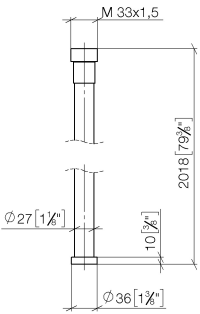
LULU

ST 050 611 6979

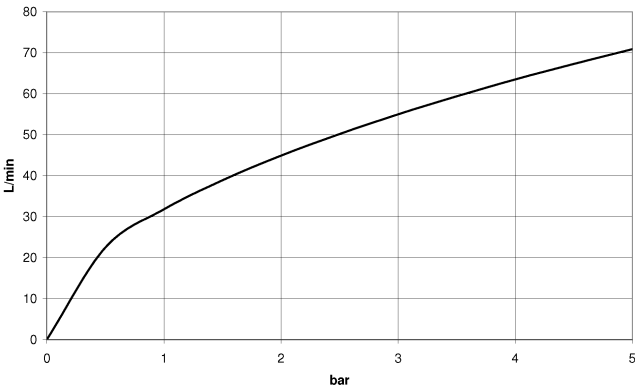
6
—
0
—
8
—
9
—
8
—
3
—
6
—
7
—
3
—
9
—

ST 050 611 6979

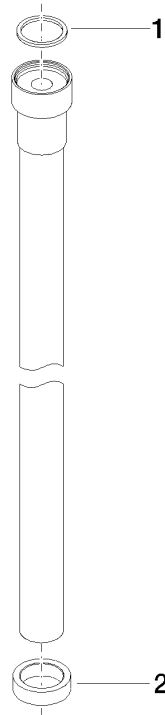
mm [inches]



Flow rate chart



Parts for other
finishes can be found
here: [Chrome](#)





WATER TUBE Kneipp wall elbow - Brushed Platinum

LULU

ST 050 611 6979

Spare parts list

No.	Item Number	Name	Quantity used	Delivery time
	09 14 20 003 90	seal	2	2